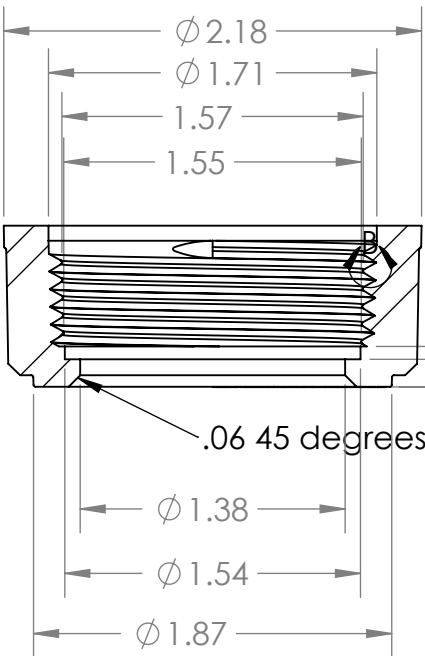
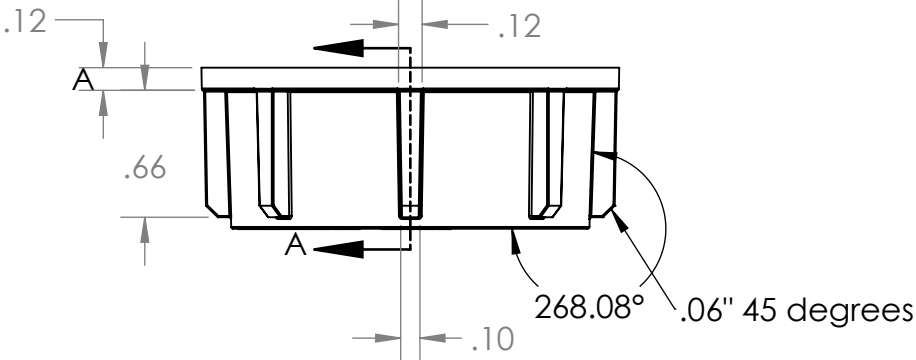
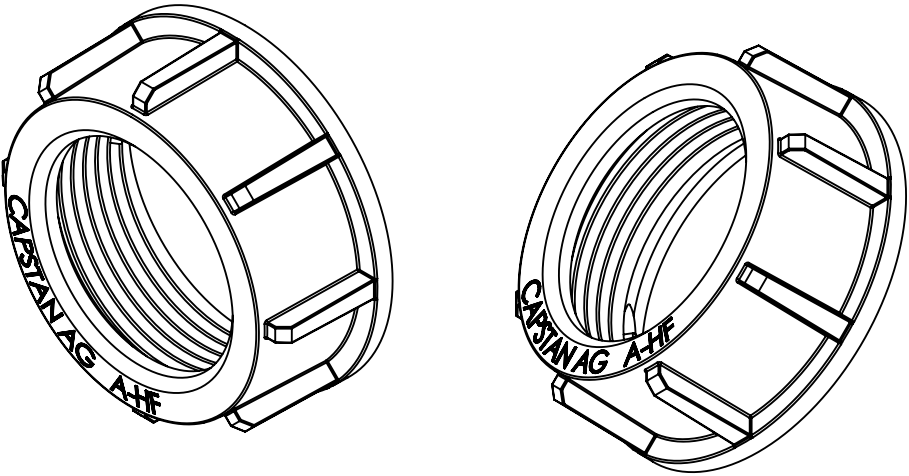
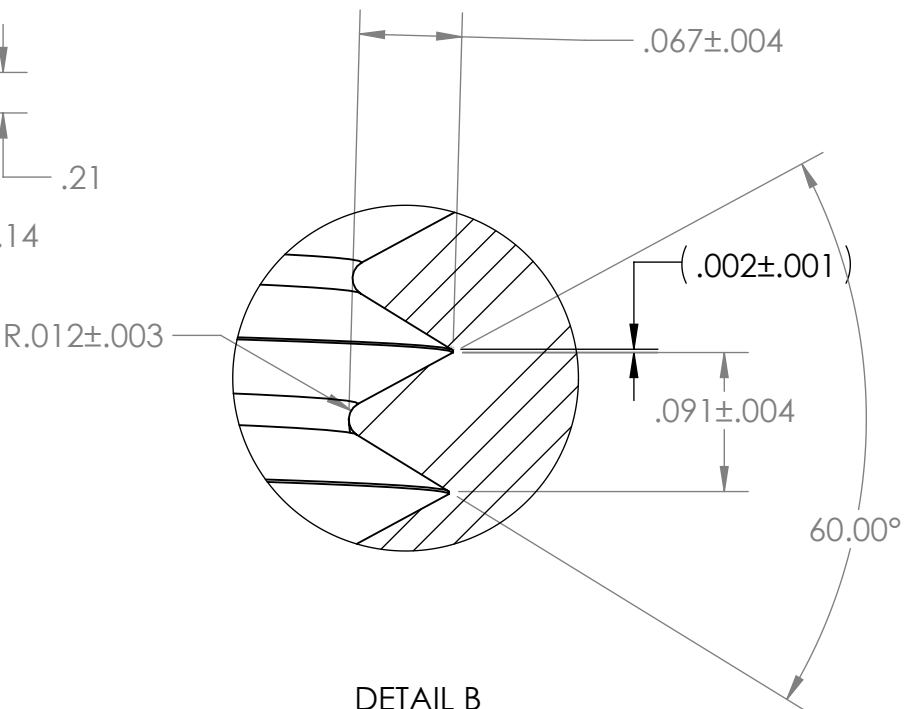


**PROPRIETARY AND CONFIDENTIAL**  
 THE INFORMATION CONTAINED IN THIS DRAWING IS THE SOLE PROPERTY OF  
 CAPSTAN AG INC. ANY REPRODUCTION IN PART OR AS A WHOLE  
 WITHOUT WRITTEN PERMISSION OF CAPSTAN AG INC IS PROHIBITED

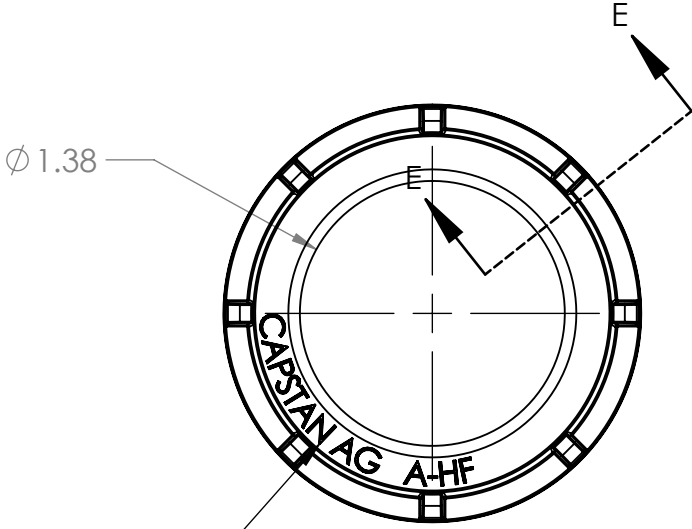
REV	ECR	DESCRIPTION	DATE	BY
A	1079	Production Release	11/24/15	BLS



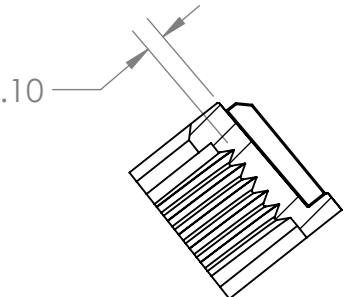
SECTION A-A  
 SCALE 1 : 1



DETAIL B  
 SCALE 8 : 1




.004 HIGH  
 .001 FILLET  
 CENTURY GOTHIC  
 .125 HIGH  
 .03937 SPACING



SECTION E-E  
 SCALE 1 : 1

Material: RTP, VLF Custom  
 Color: Black

UNLESS OTHERWISE SPECIFIED:				<b>CAPSTAN AG SYSTEMS, INC.</b> <b>4225 Kirklawn Ave., TOPEKA, KS 66609</b>	
DIMENSIONS ARE IN INCHES TOLERANCES: ANGULAR: ± 1.0 TWO PLACE DECIMAL ± .01 THREE PLACE DECIMAL ± .003		Name Drawn <b>ADL</b>	Date 7/30/13	TITLE: <b>HIGHFLOW NUT            FITS ARAG HIGHFLOW</b>	
INTERPRET GEOMETRIC TOLERANCING PER:		Checked QA APP		SIZE <b>B</b>	DWG No: <b>717101-306</b>
MATERIAL FINISH				SCALE: <b>None</b>	REV <b>A</b>
DO NOT SCALE DRAWING				SHEET 1 of 1	