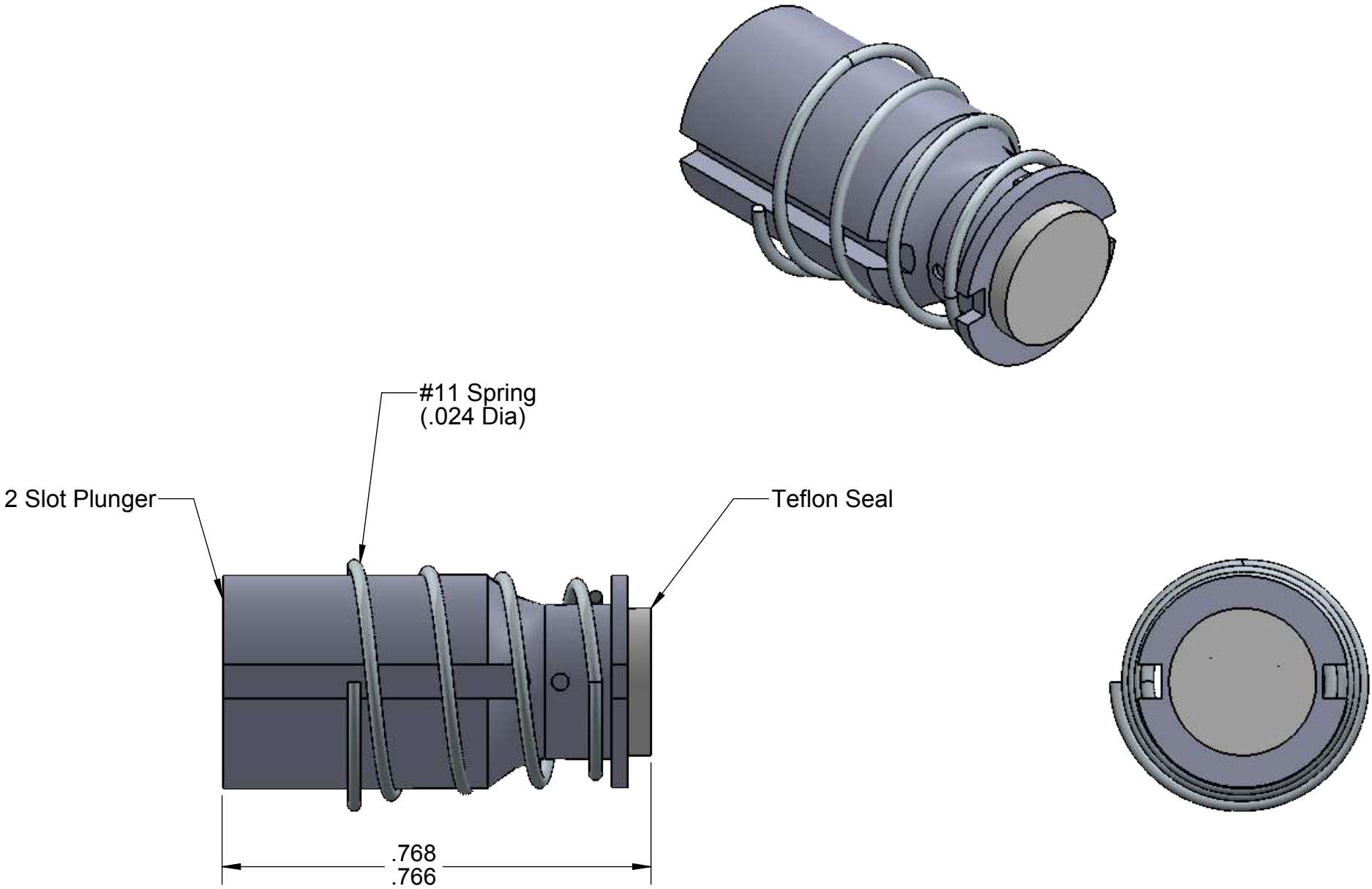



**PROPRIETARY AND CONFIDENTIAL**  
 THE INFORMATION CONTAINED IN THIS DRAWING IS THE SOLE PROPERTY OF  
 CAPSTAN AG INC. ANY REPRODUCTION IN PART OR AS A WHOLE  
 WITHOUT WRITTEN PERMISSION OF CAPSTAN AG INC IS PROHIBITED

Rev	ECR	Description	Date	By	App
A		Production Release	7/14/15	BLS	

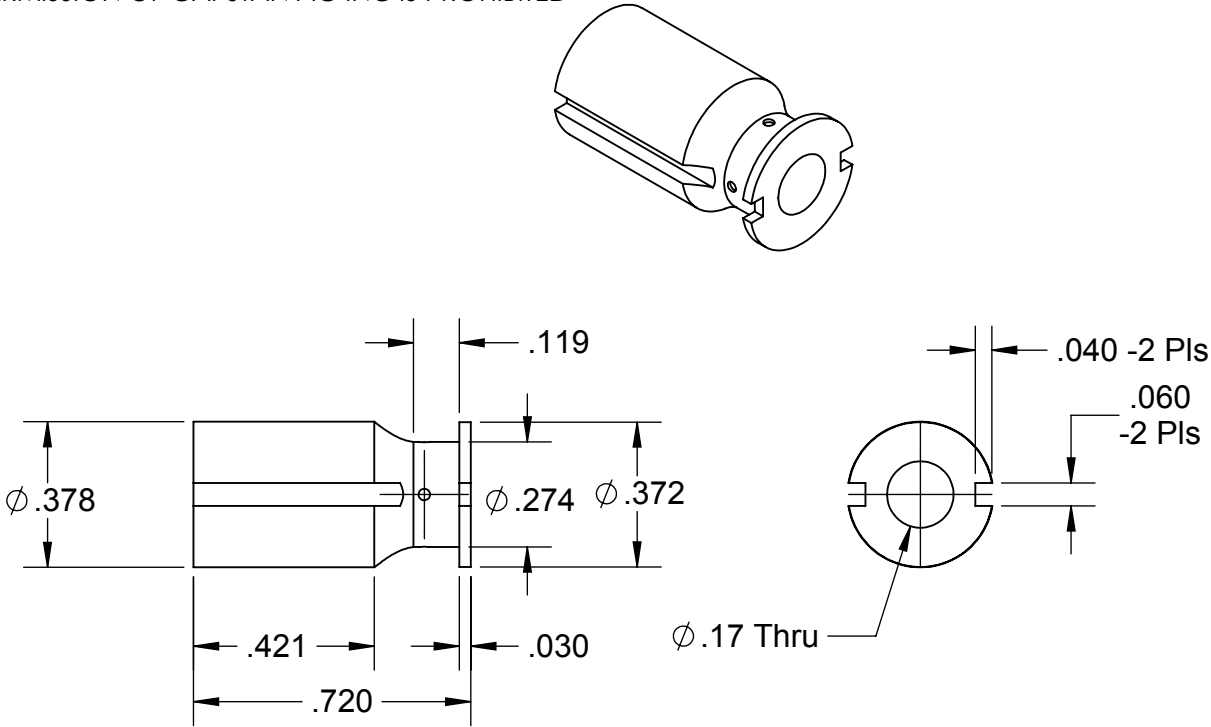


See Page 2 for Parts Dimensions

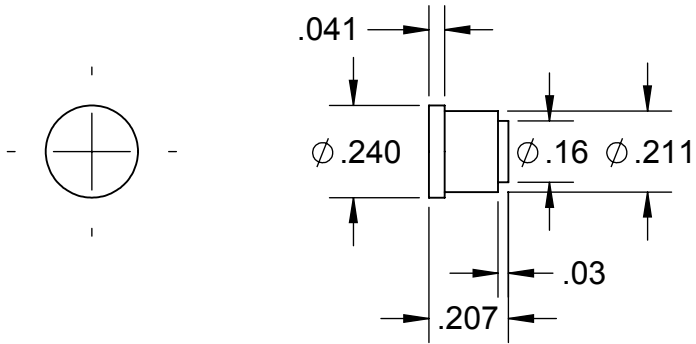
UNLESS OTHERWISE SPECIFIED:		<div><div>CAPSTAN Ag Systems, Inc. <small>EST. 1971</small></div></div> <div>APPLICATION SYSTEMS FOR PROFESSIONALS</div>		<div>CAPSTAN AG SYSTEMS, INC.</div> <div>4225 S.W. Kirklawn Ave., Topeka, KS 66609</div>												
DIMENSIONS ARE IN INCHES TOLERANCES: FRACTIONAL ± ANGULAR: MACH ±    BEND ± TWO PLACE DECIMAL    ± THREE PLACE DECIMAL    ± INTERPRET GEOMETRIC TOLERANCING PER:		<table><tr><td></td><td>Name</td><td>Date</td></tr><tr><td>Drawn</td><td>BLS</td><td>12/14/12</td></tr><tr><td>Checked</td><td></td><td></td></tr><tr><td>QA APP</td><td></td><td></td></tr></table>		Name	Date	Drawn	BLS	12/14/12	Checked			QA APP			TITLE: <div>Plunger Assembly, Standard Teflon Seal</div>	
	Name	Date														
Drawn	BLS	12/14/12														
Checked																
QA APP																
MATERIAL				SIZE B	DWG No: 716190-001	REV A										
FINISH				SCALE:    None		SHEET 1 of 2										
DO NOT SCALE DRAWING																

**PROPRIETARY AND CONFIDENTIAL**  
THE INFORMATION CONTAINED IN THIS DRAWING IS THE SOLE PROPERTY OF  
CAPSTAN AG INC. ANY REPRODUCTION IN PART OR AS A WHOLE  
WITHOUT WRITTEN PERMISSION OF CAPSTAN AG INC IS PROHIBITED

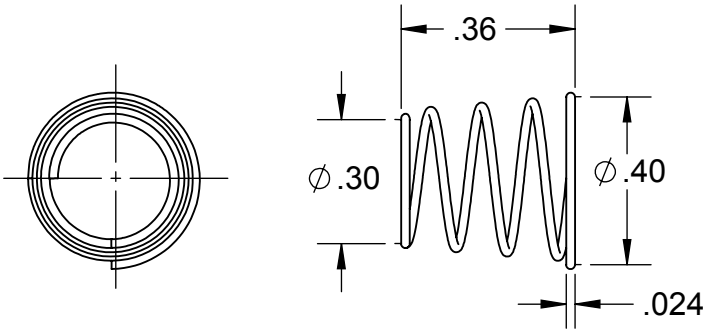
Rev	ECR	Description	Date	By	App
A		Production Release	7/14/15	BLS	




2 Slot Plunger  
Material: Stainless Steel



Plunger Tip  
Material: Teflon, White



Plunger Spring  
Material: .024 Dia Stainless Steel

UNLESS OTHERWISE SPECIFIED:		<div><b>CAPSTAN</b> Ag Systems, Inc. <small>EST. 1974</small></div>		<b>CAPSTAN AG SYSTEMS, INC.</b> 4225 S.W. Kirklawn Ave., Topeka, KS 66609			
DIMENSIONS ARE IN INCHES		APPLICATION SYSTEMS FOR PROFESSIONALS		TITLE:  <b>Plunger Assembly, Standard Teflon Seal</b>			
TOLERANCES:			Name				Date
FRACTIONAL ±		Drawn	<b>BLS</b>				12/14/12
ANGULAR: MACH ±    BEND ±		Checked					
TWO PLACE DECIMAL    ± THREE PLACE DECIMAL    ±		QA APP					
INTERPRET GEOMETRIC TOLERANCING PER:							
MATERIAL				SIZE <b>B</b>	DWG No:  <b>716190-001</b>	REV  <b>A</b>	
FINISH				SCALE: <b>None</b>			
DO NOT SCALE DRAWING				SHEET 2 of 2			