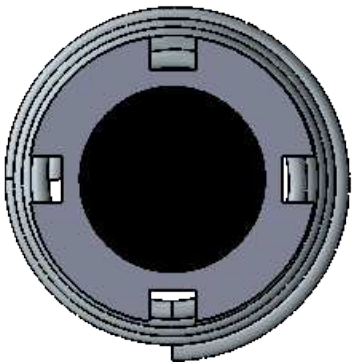
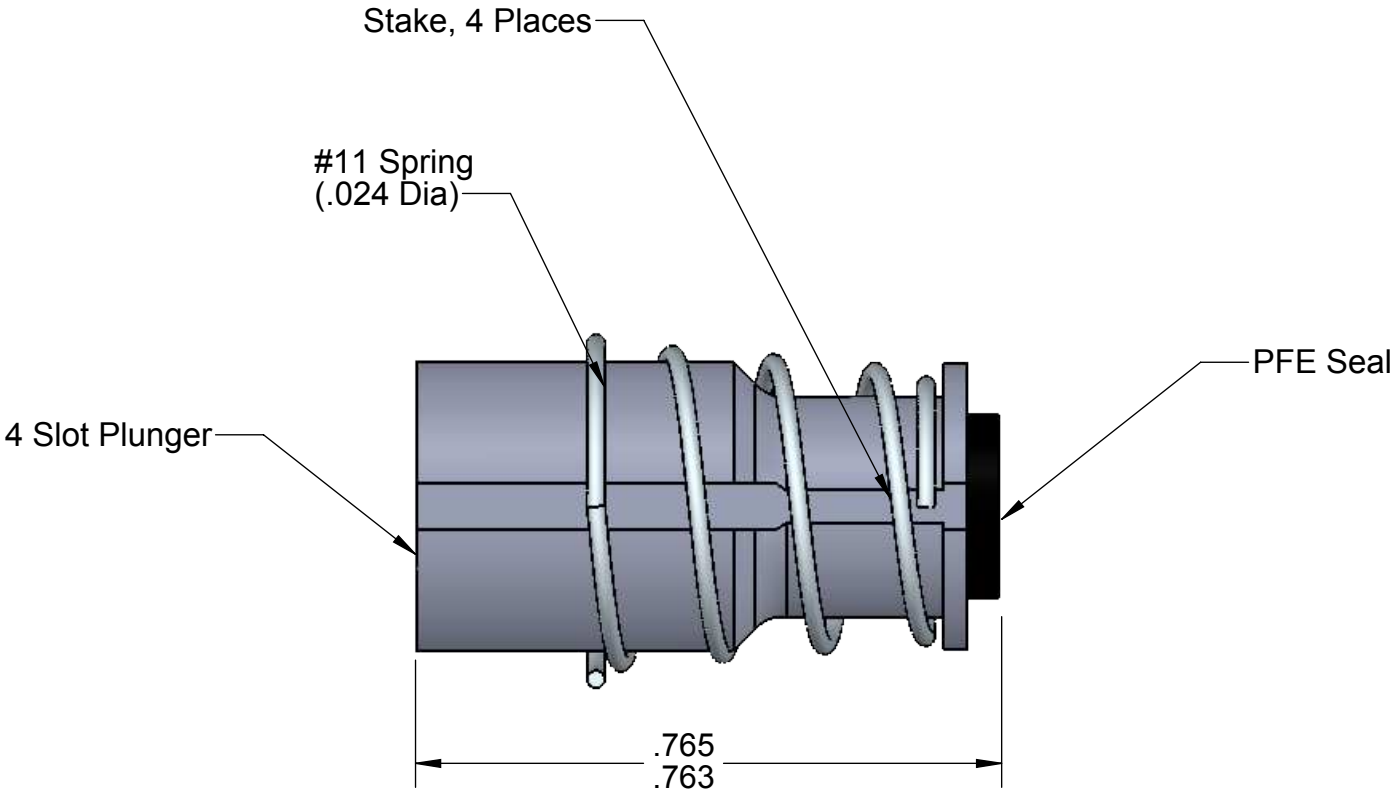
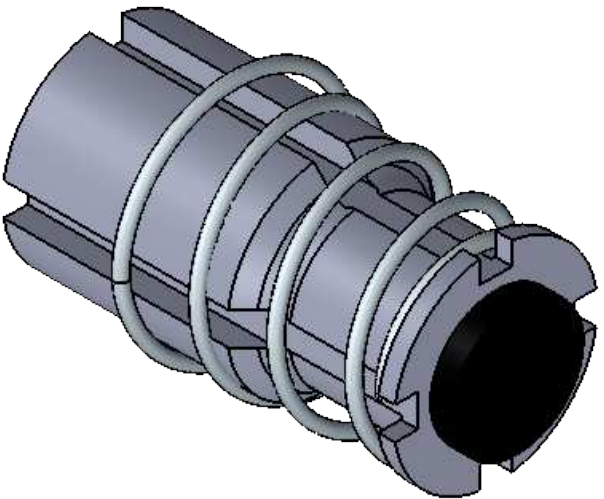



PROPRIETARY AND CONFIDENTIAL
THE INFORMATION CONTAINED IN THIS DRAWING IS THE SOLE PROPERTY OF
CAPSTAN AG INC. ANY REPRODUCTION IN PART OR AS A WHOLE
WITHOUT WRITTEN PERMISSION OF CAPSTAN AG INC IS PROHIBITED

Rev	ECR	Description	Date	By	App
A		Production Release	7/14/15	BLS	

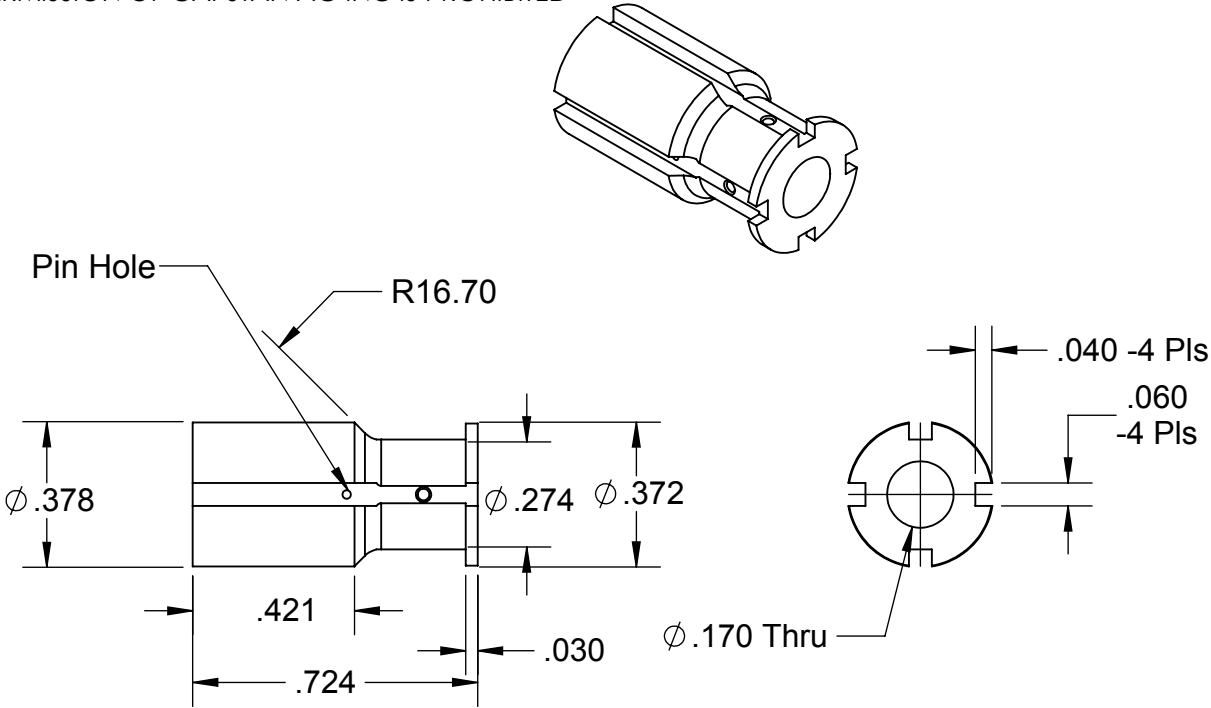


See Page 2 for Parts Dimensions

UNLESS OTHERWISE SPECIFIED:		 <div>CAPSTAN Ag Systems, Inc. <small>SINCE 1971</small></div>		CAPSTAN AG SYSTEMS, INC.	
DIMENSIONS ARE IN INCHES		APPLICATION SYSTEMS FOR PROFESSIONALS		4225 S.W. Kirklawn Ave., Topeka, KS 66609	
TOLERANCES:				TITLE: Plunger Assembly PFE Seal 4 Slot, Standard Spring	
FRACTIONAL ±		Name			
ANGULAR: MACH ± BEND ±		Date			
TWO PLACE DECIMAL ±		Drawn			
THREE PLACE DECIMAL ±		Checked			
INTERPRET GEOMETRIC TOLERANCING PER:		QA APP			
MATERIAL				SIZE B	
FINISH				DWG No: 716009-114	
DO NOT SCALE DRAWING				REV A	
				SCALE: None	
				SHEET 1 of 2	

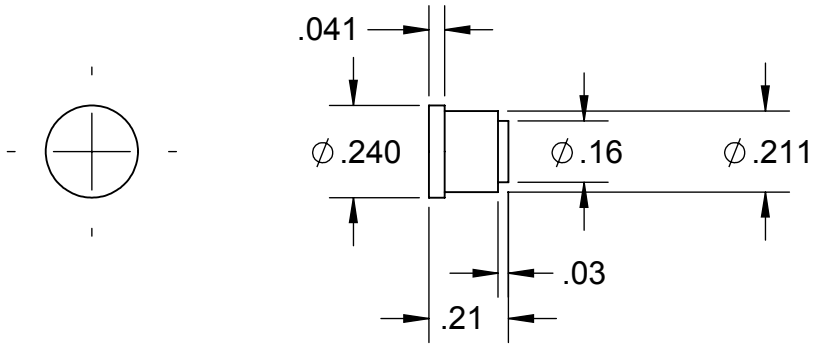
PROPRIETARY AND CONFIDENTIAL
 THE INFORMATION CONTAINED IN THIS DRAWING IS THE SOLE PROPERTY OF
 CAPSTAN AG INC. ANY REPRODUCTION IN PART OR AS A WHOLE
 WITHOUT WRITTEN PERMISSION OF CAPSTAN AG INC IS PROHIBITED

Rev	ECR	Description	Date	By	App
A		Production Release	7/14/15	BLS	



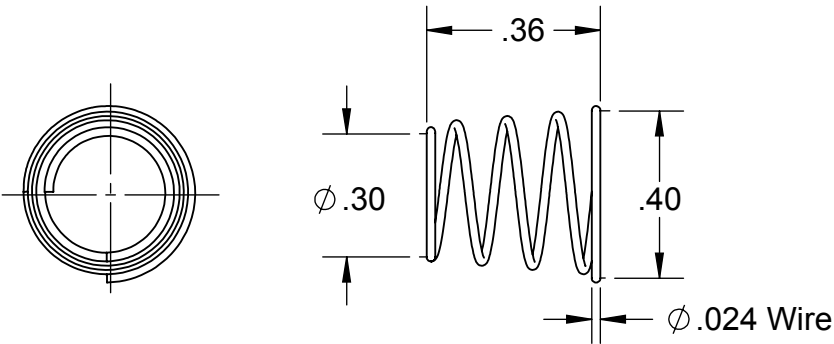
4 Slot Plunger

Material: Stainless Steel




Plunger Tip

Material: PFE Rubber, Black



Plunger Spring

Material: .024 Dia Stainless Steel

UNLESS OTHERWISE SPECIFIED:		<div>CAPSTAN Ag Systems, Inc. <small>EST. 1974</small></div> <div>APPLICATION SYSTEMS FOR PROFESSIONALS</div>		CAPSTAN AG SYSTEMS, INC. 4225 S.W. Kirklawn Ave., Topeka, KS 66609												
DIMENSIONS ARE IN INCHES TOLERANCES: FRACTIONAL ± ANGULAR: MACH ± BEND ± TWO PLACE DECIMAL ± THREE PLACE DECIMAL ± INTERPRET GEOMETRIC TOLERANCING PER:		<table><tr><td></td><td>Name</td><td>Date</td></tr><tr><td>Drawn</td><td>BLS</td><td>12/14/12</td></tr><tr><td>Checked</td><td></td><td></td></tr><tr><td>QA APP</td><td></td><td></td></tr></table>		Name	Date	Drawn	BLS	12/14/12	Checked			QA APP			TITLE: <div>Plunger Assembly PFE Seal 4 Slot, Standard Spring</div>	
	Name	Date														
Drawn	BLS	12/14/12														
Checked																
QA APP																
MATERIAL		SIZE B	DWG No: 716009-114	REV A												
FINISH		SCALE: None		SHEET 2 of 2												
DO NOT SCALE DRAWING																