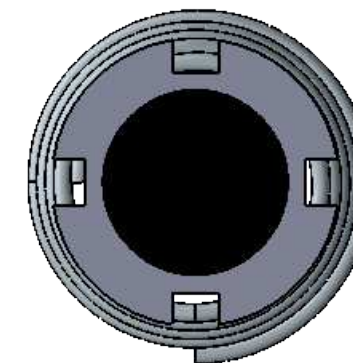
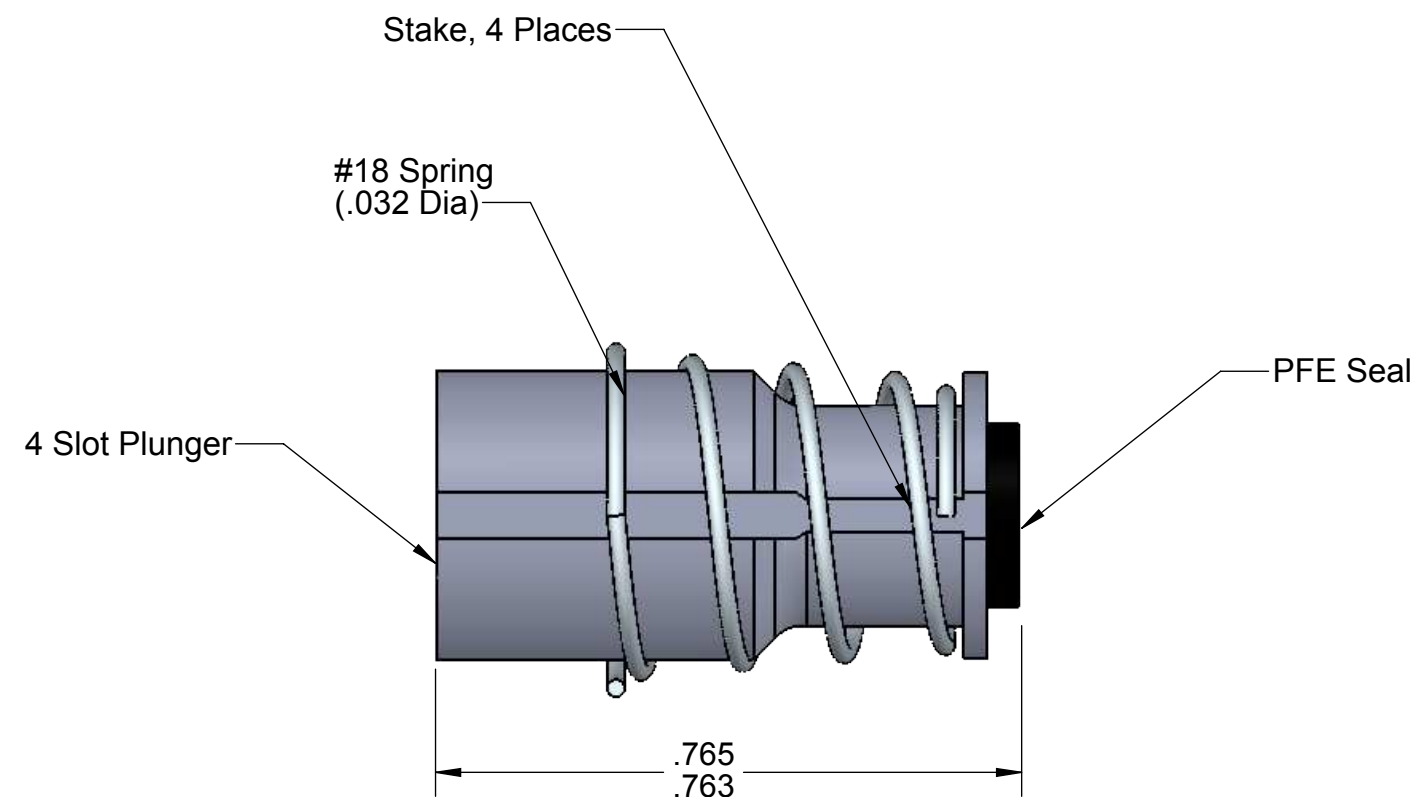
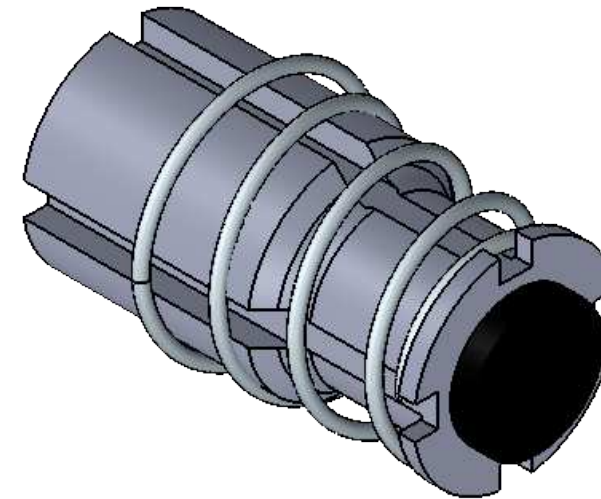


THE INFORMATION CONTAINED IN THIS DRAWING IS THE SOLE PROPERTY OF  
CAPSTAN AG INC. ANY REPRODUCTION IN PART OR AS A WHOLE  
WITHOUT WRITTEN PERMISSION OF CAPSTAN AG INC IS PROHIBITED

Rev	ECR	Description	Date	By	App
A		Production Release	7/14/15	BLS	

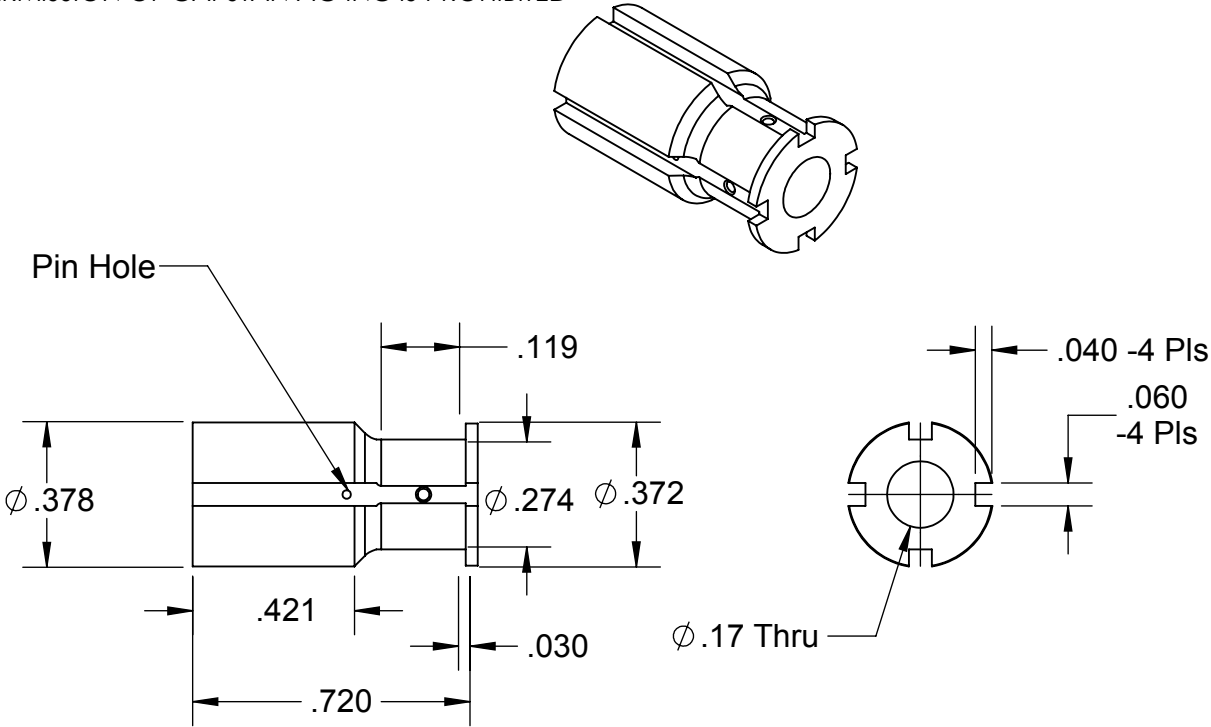


See Page 2 for Parts Dimensions

UNLESS OTHERWISE SPECIFIED:		<div><div><div><div></div><div></div><div></div></div><div>Since 1973</div></div><div>CAPSTAN</div><div>Ag Systems, Inc.</div></div> <div>APPLICATION SYSTEMS FOR PROFESSIONALS</div>		<div>CAPSTAN AG SYSTEMS, INC.</div> <div>4225 S.W. Kirklawn Ave., Topeka, KS 66609</div>												
DIMENSIONS ARE IN INCHES TOLERANCES: FRACTIONAL ± ANGULAR: MACH ±    BEND ± TWO PLACE DECIMAL    ± THREE PLACE DECIMAL    ± INTERPRET GEOMETRIC TOLERANCING PER:		<table><tr><td></td><td>Name</td><td>Date</td></tr><tr><td>Drawn</td><td>BLS</td><td>12/14/12</td></tr><tr><td>Checked</td><td></td><td></td></tr><tr><td>QA APP</td><td></td><td></td></tr></table>		Name	Date	Drawn	BLS	12/14/12	Checked			QA APP			TITLE: <div>Plunger Assembly PFE Seal Heavy Spring</div>	
	Name	Date														
Drawn	BLS	12/14/12														
Checked																
QA APP																
MATERIAL		SIZE	DWG No:	REV												
FINISH		B	716009-113	A												
DO NOT SCALE DRAWING		SCALE:    None		SHEET 1 of 2												

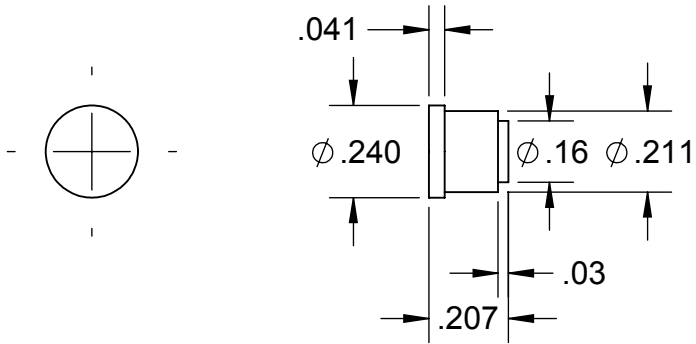
**PROPRIETARY AND CONFIDENTIAL**  
 THE INFORMATION CONTAINED IN THIS DRAWING IS THE SOLE PROPERTY OF  
 CAPSTAN AG INC. ANY REPRODUCTION IN PART OR AS A WHOLE  
 WITHOUT WRITTEN PERMISSION OF CAPSTAN AG INC IS PROHIBITED

Rev	ECR	Description	Date	By	App
A		Production Release	7/14/15	BLS	



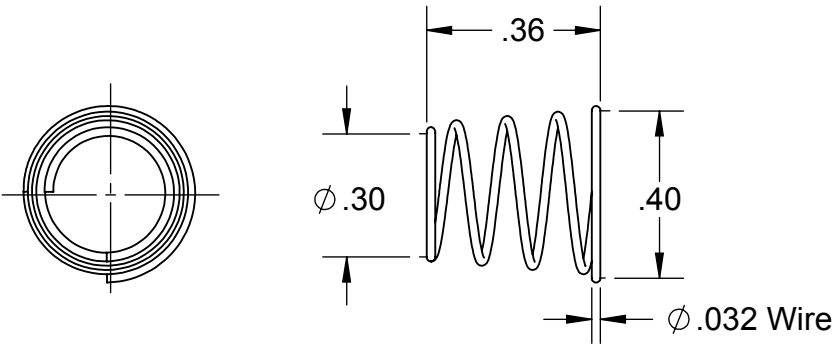
4 Slot Plunger

Material: Stainless Steel




Plunger Tip

Material: PFE Rubber, Black



Plunger Spring

Material: .032 Dia Stainless Steel

UNLESS OTHERWISE SPECIFIED:		<div><b>CAPSTAN</b> Ag Systems, Inc. <small>Since 1974</small></div> <div>APPLICATION SYSTEMS FOR PROFESSIONALS</div>		<b>CAPSTAN AG SYSTEMS, INC.</b> 4225 S.W. Kirklawn Ave., Topeka, KS 66609												
DIMENSIONS ARE IN INCHES TOLERANCES: FRACTIONAL ± ANGULAR: MACH ±    BEND ± TWO PLACE DECIMAL    ± THREE PLACE DECIMAL    ± INTERPRET GEOMETRIC TOLERANCING PER:		<table><tr><td></td><td>Name</td><td>Date</td></tr><tr><td>Drawn</td><td>BLS</td><td>12/14/12</td></tr><tr><td>Checked</td><td></td><td></td></tr><tr><td>QA APP</td><td></td><td></td></tr></table>		Name	Date	Drawn	BLS	12/14/12	Checked			QA APP			TITLE:  Plunger Assembly PFE Seal Heavy Spring	
	Name	Date														
Drawn	BLS	12/14/12														
Checked																
QA APP																
MATERIAL		SIZE B	DWG No:  716009-113	REV A												
FINISH  DO NOT SCALE DRAWING		SCALE:    None		SHEET 2 of 2												