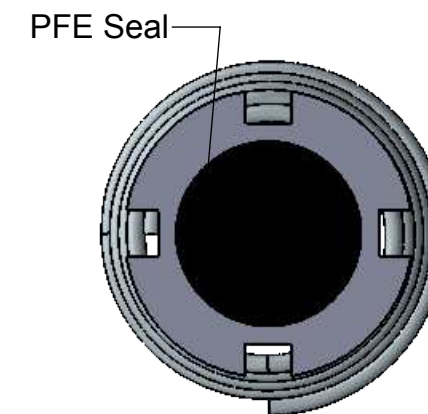
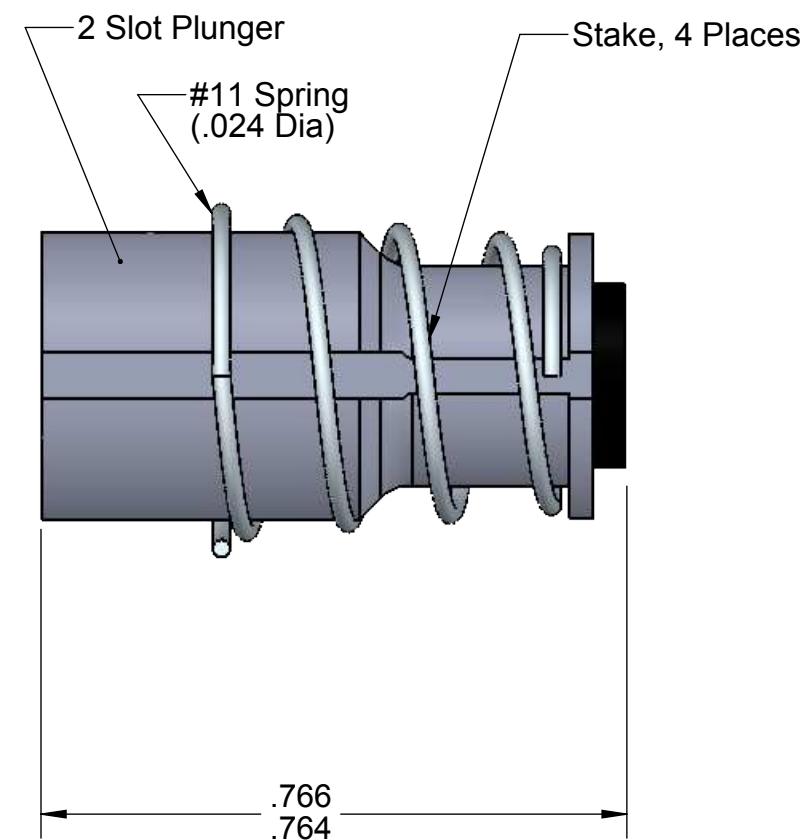
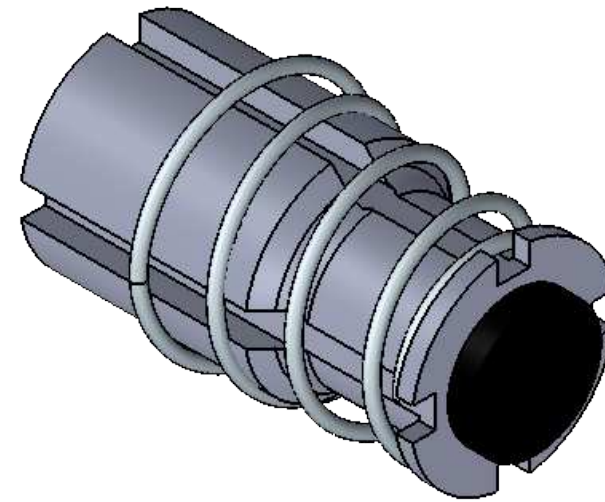



THE INFORMATION CONTAINED IN THIS DRAWING IS THE SOLE PROPERTY OF
CAPSTAN AG INC. ANY REPRODUCTION IN PART OR AS A WHOLE
WITHOUT WRITTEN PERMISSION OF CAPSTAN AG INC IS PROHIBITED

Rev	ECR	Description	Date	By	App
A		Production Release	7/14/15	BLS	

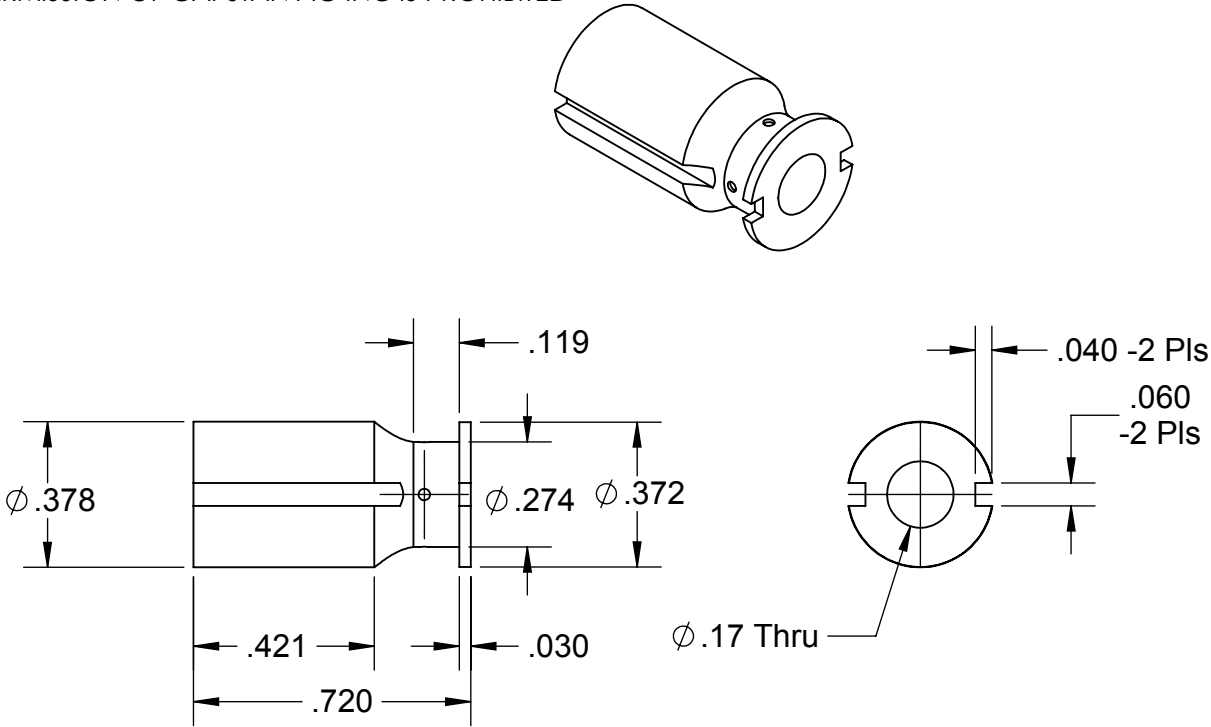


See Page 2 for Parts Dimensions

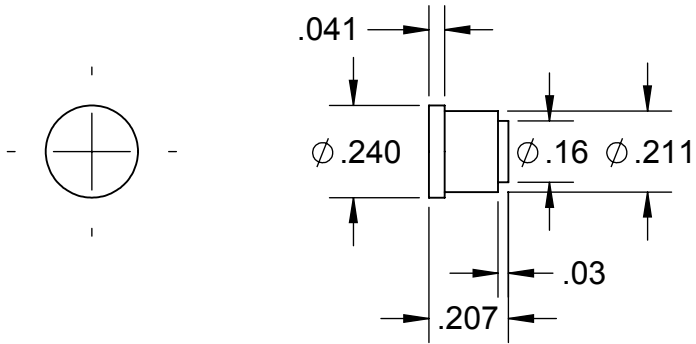
UNLESS OTHERWISE SPECIFIED:		<div>CAPSTAN Ag Systems, Inc. <small>Since 1971</small></div>		<div>CAPSTAN AG SYSTEMS, INC. 4225 S.W. Kirklawn Ave., Topeka, KS 66609</div>			
DIMENSIONS ARE IN INCHES TOLERANCES: FRACTIONAL ± ANGULAR: MACH ± BEND ± TWO PLACE DECIMAL ± THREE PLACE DECIMAL ± INTERPRET GEOMETRIC TOLERANCING PER:		APPLICATION SYSTEMS FOR PROFESSIONALS		TITLE:			
			Name	Date	Plunger Assembly, Standard PFE Seal		
		Drawn	BLS	12/14/12			
		Checked					
		QA APP					
MATERIAL				SIZE	DWG No:	716009-111	REV
FINISH				B			A
DO NOT SCALE DRAWING		SCALE: None				SHEET 1 of 2	

PROPRIETARY AND CONFIDENTIAL
 THE INFORMATION CONTAINED IN THIS DRAWING IS THE SOLE PROPERTY OF
 CAPSTAN AG INC. ANY REPRODUCTION IN PART OR AS A WHOLE
 WITHOUT WRITTEN PERMISSION OF CAPSTAN AG INC IS PROHIBITED

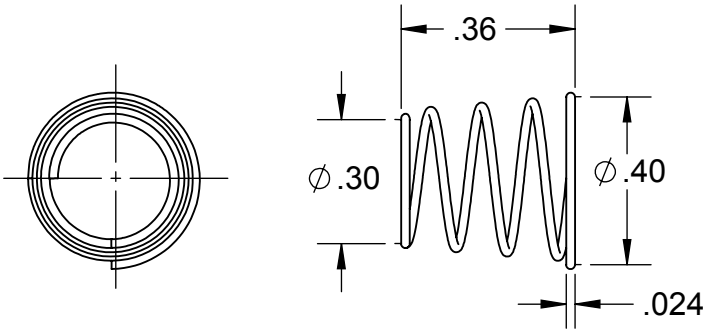
Rev	ECR	Description	Date	By	App
A		Production Release	7/14/15	BLS	




2 Slot Plunger
 Material: Stainless Steel



Plunger Tip
 Material: PFE Rubber, Black



Plunger Spring
 Material: .024 Dia Stainless Steel

UNLESS OTHERWISE SPECIFIED:		<div>CAPSTAN Ag Systems, Inc. <small>Since 1974</small></div>		CAPSTAN AG SYSTEMS, INC.													
DIMENSIONS ARE IN INCHES		<div>APPLICATION SYSTEMS FOR PROFFESIONALS</div> <table><tr><td></td><td>Name</td><td>Date</td></tr><tr><td>Drawn</td><td>BLS</td><td>12/14/12</td></tr><tr><td>Checked</td><td></td><td></td></tr><tr><td>QA APP</td><td></td><td></td></tr></table>			Name	Date	Drawn	BLS	12/14/12	Checked			QA APP			4225 S.W. Kirklawn Ave., Topeka, KS 66609	
	Name			Date													
Drawn	BLS			12/14/12													
Checked																	
QA APP																	
TOLERANCES:		TITLE: Plunger Assembly, Standard PFE Seal															
FRACTIONAL ±																	
ANGULAR: MACH ± BEND ±																	
TWO PLACE DECIMAL ±																	
THREE PLACE DECIMAL ±		SIZE B		DWG No: 716009-111													
INTERPRET GEOMETRIC				REV A													
TOLERANCING PER:																	
MATERIAL		SCALE: None		SHEET 2 of 2													
FINISH																	
DO NOT SCALE DRAWING																	