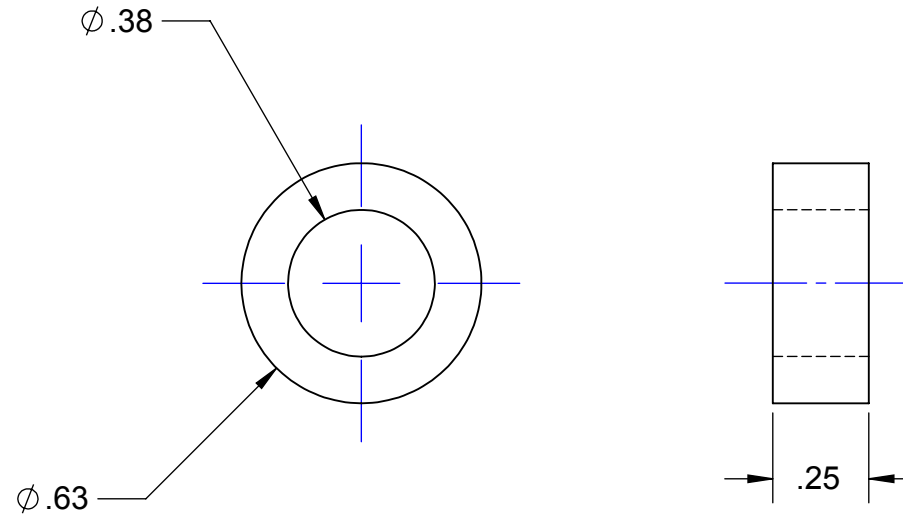


PROPRIETARY AND CONFIDENTIAL

THE INFORMATION CONTAINED IN THIS DRAWING IS THE SOLE PROPERTY OF
CAPSTAN AG INC. ANY REPRODUCTION IN PART OR AS A WHOLE
WITHOUT WRITTEN PERMISSION OF CAPSTAN AG INC IS PROHIBITED

REV	DESCRIPTION	DATE	BY
A	Production Release	10/22/15	BLS



Material: Aluminum

Finish: None

UNLESS OTHERWISE SPECIFIED:

DIMENSIONS ARE IN INCHES
TOLERANCES:
FRACTIONAL ±
ANGULAR: MACH ± BEND ±
TWO PLACE DECIMAL ±
THREE PLACE DECIMAL ±

INTERPRET GEOMETRIC
TOLERANCING PER:

MATERIAL

FINISH

DO NOT SCALE DRAWING



CAPSTAN AG SYSTEMS, INC.
4225 Kirklawn Ave., TOPEKA, KS 66609

	Name	Date
Drawn	BLS	10/22/15
Checked		
QA APP		

TITLE:

Spacer, Aluminum
3/8 x 5/8 x 1/4

SIZE	DWG No:	REV
A	706520-200	A
SCALE: None		SHEET 1 of 1