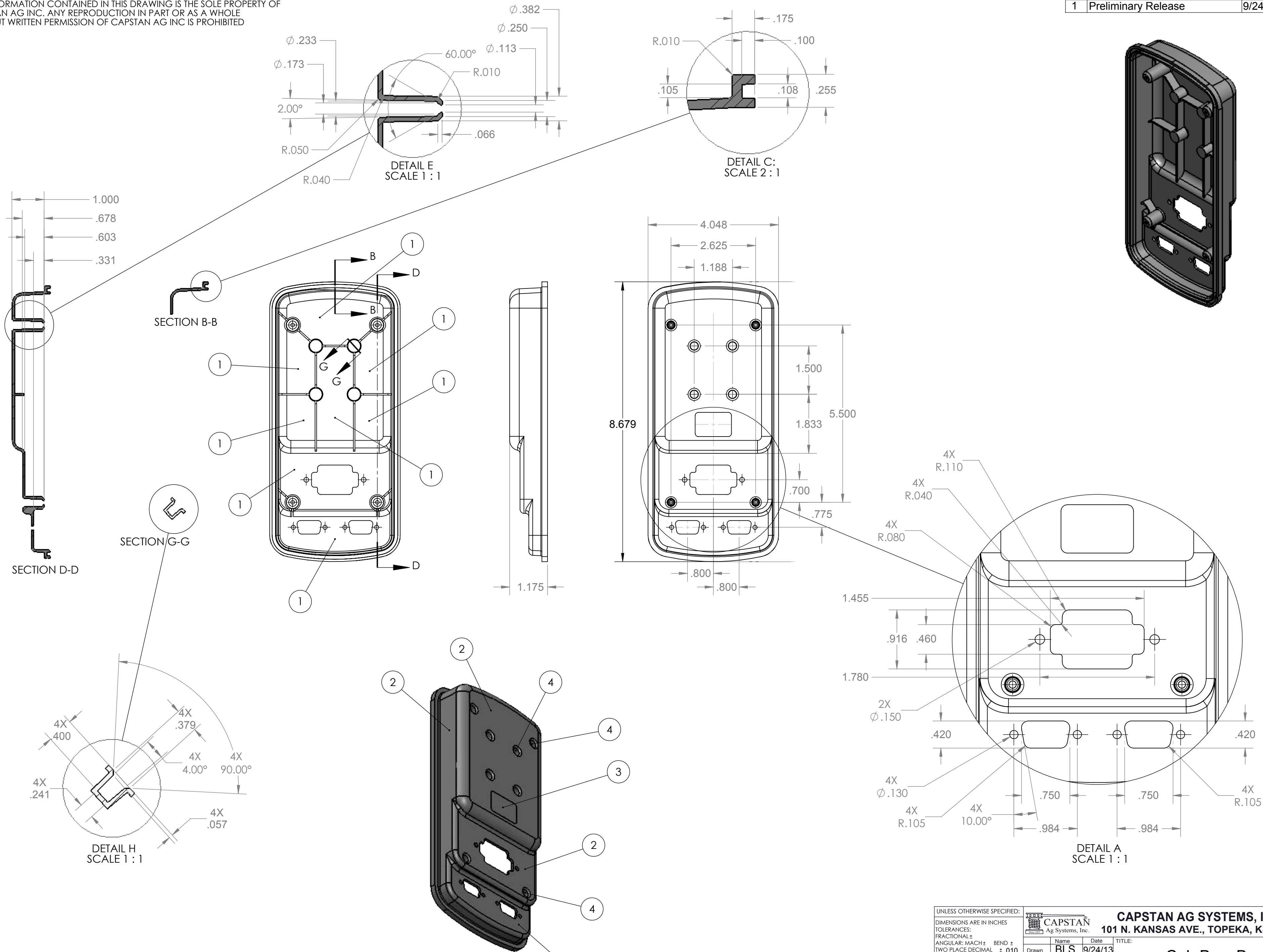



PROPRIETARY AND CONFIDENTIAL  
THE INFORMATION CONTAINED IN THIS DRAWING IS THE SOLE PROPERTY OF  
CAPSTAN AG INC. ANY REPRODUCTION IN PART OR AS A WHOLE  
WITHOUT WRITTEN PERMISSION OF CAPSTAN AG INC IS PROHIBITED

| REV | DESCRIPTION         | DATE    | BY  |
|-----|---------------------|---------|-----|
| 1   | Preliminary Release | 9/24/13 | BLS |



1. SMOOTH NON-COSMETIC FINISH ON INTERIOR CASE SURFACES.
2. COSMETIC BEAD BLAST FINISH ON CASE EXTERIOR SURFACES
3. SMOOTH FINISH IN BOTTOM POCKET SURFACE
4. HOLE BORES SMOOTH FOR EASY MOLD RELEASE

|   |     |   |         |  |                              |
|---|-----|---|---------|--|------------------------------|
| UNLESS OTHERWISE SPECIFIED:<br>DIMENSIONS ARE IN INCHES<br>TOLERANCES:<br>FRACTIONAL ±<br>ANGULAR: MACH ± BEND ±<br>TWO PLACE DECIMAL ± .010<br>THREE PLACE DECIMAL ± .005<br>INTERPRET GEOMETRIC<br>TOLERANCING PER:<br>MATERIAL<br>FINISH<br>DO NOT SCALE DRAWING |     | <br>Ag Systems, Inc. |         | CAPSTAN AG SYSTEMS, INC.<br>101 N. KANSAS AVE., TOPEKA, KS 66603 |                              |
| Drawn   | BLS | Date  | 9/24/13 | TITLE:<br><b>Cab Box, Back</b>                                   |                              |
| Checked   |     | QA APP  |         | SIZE<br>B  | DWG No:<br><b>626100-003</b> |
|   |     |   |         | SCALE: None  | REV<br>1                     |
|   |     |   |         | SHEET 1 of 1   |                              |