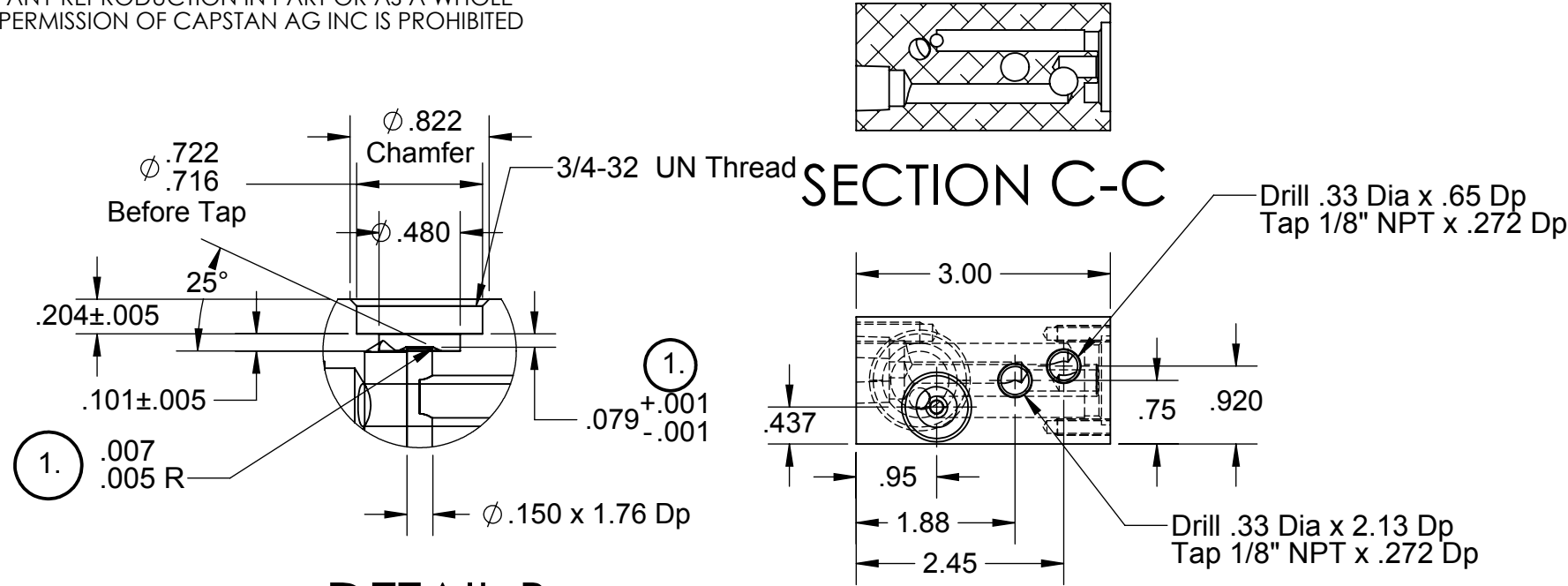
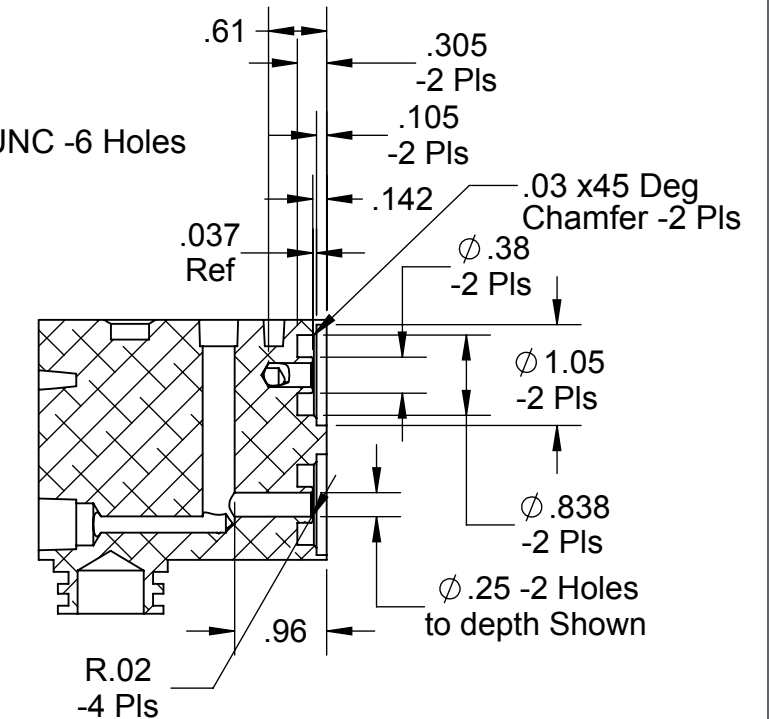
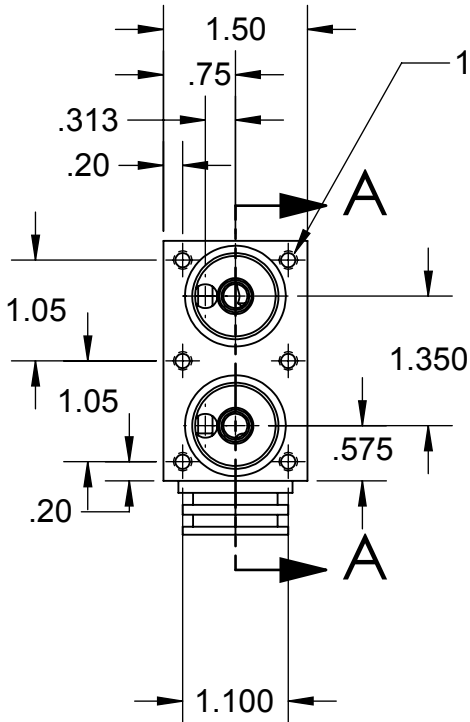
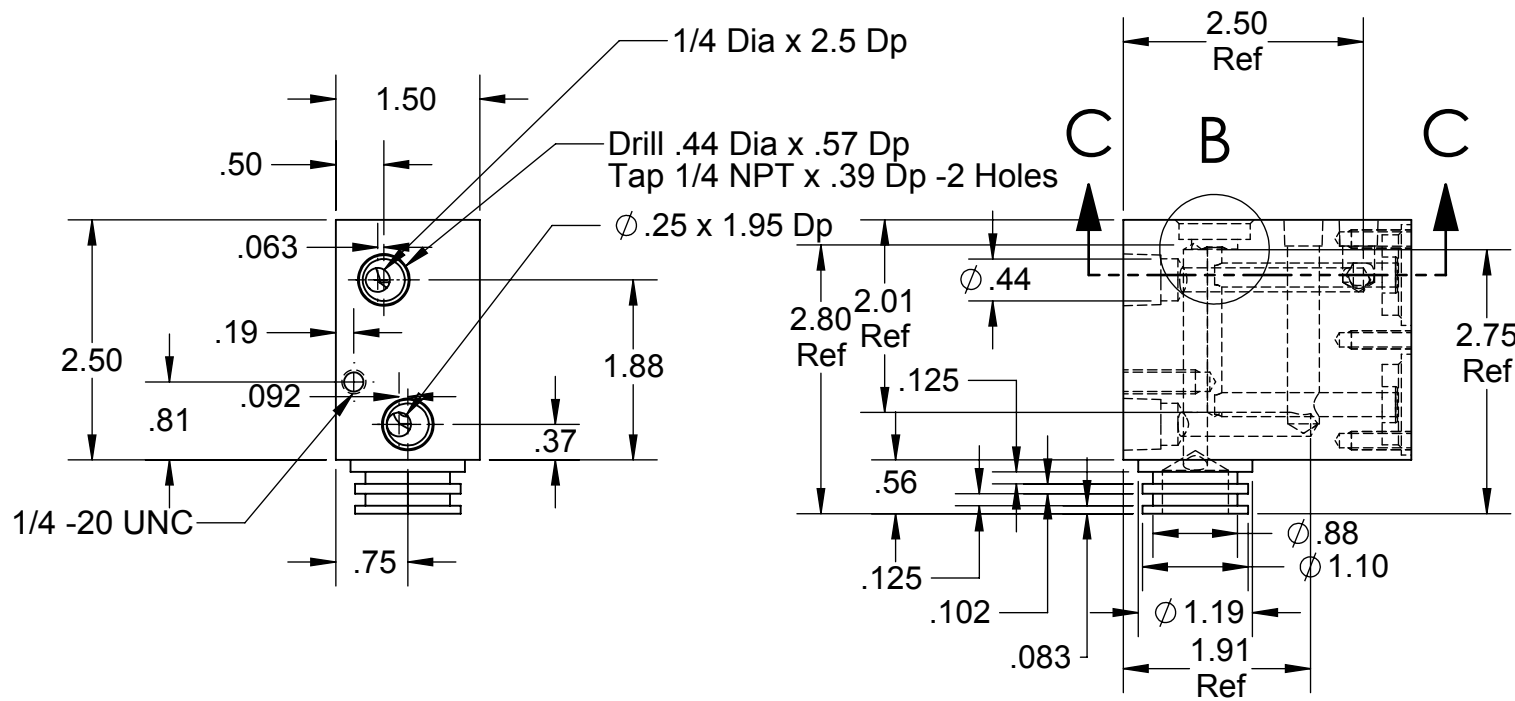


PROPRIETARY AND CONFIDENTIAL
THE INFORMATION CONTAINED IN THIS DRAWING IS THE SOLE PROPERTY OF
CAPSTAN AG INC. ANY REPRODUCTION IN PART OR AS A WHOLE
WITHOUT WRITTEN PERMISSION OF CAPSTAN AG INC IS PROHIBITED

Rev	ECR	Description	Date	By	App
A	2294	Production Release	2/20/18	BLS	




DETAIL B
SCALE 1 : 1



SECTION A-A

Notes:
1. This is a Critical Dimension.

Material: 6061-T6 Aluminum
Finish: MIL-A-8625 Type III, Class 2, Black, 2.0 Mil Thickness

UNLESS OTHERWISE SPECIFIED:		<div>CapstanAG</div>				
DIMENSIONS ARE IN INCHES TOLERANCES: FRACTIONAL ± ANGULAR: MACH ± BEND ± TWO PLACE DECIMAL ± .010 THREE PLACE DECIMAL ± .003 INTERPRET GEOMETRIC TOLERANCING PER: MATERIAL FINISH DO NOT SCALE DRAWING			Name	Date	TITLE: <div>Dual Block Wilger LF</div>	
		Drawn	BLS	2/20/18		
		Checked				
		QA APP				
				SIZE B	DWG No: 625019-001	REV A
		SCALE: None				SHEET 1 of 1