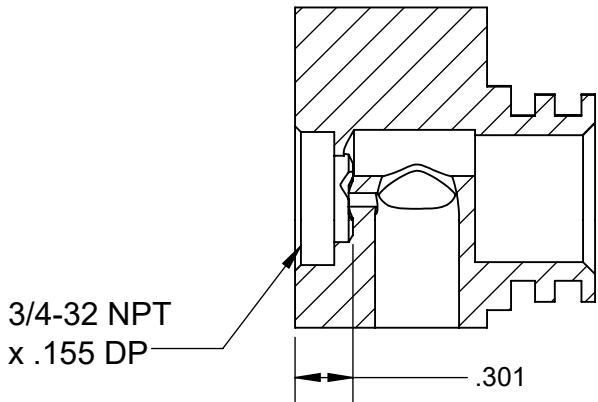
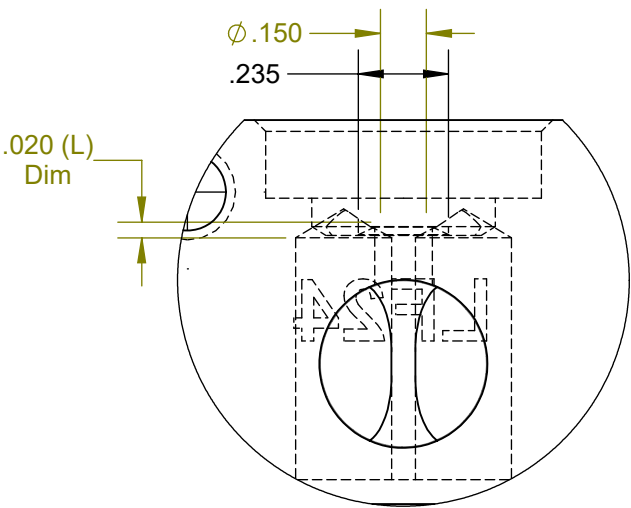
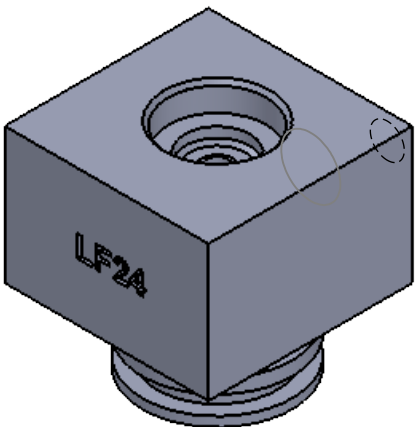
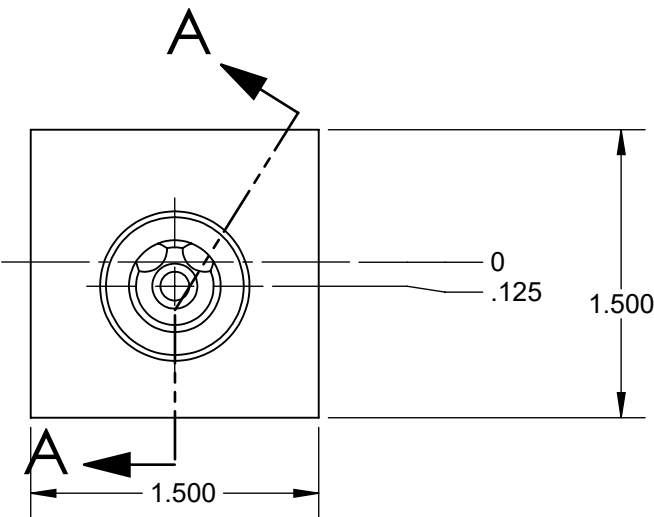


PROPRIETARY AND CONFIDENTIAL
 THE INFORMATION CONTAINED IN THIS DRAWING IS THE SOLE PROPERTY OF
 CAPSTAN AG INC. ANY REPRODUCTION IN PART OR AS A WHOLE
 WITHOUT WRITTEN PERMISSION OF CAPSTAN AG INC IS PROHIBITED

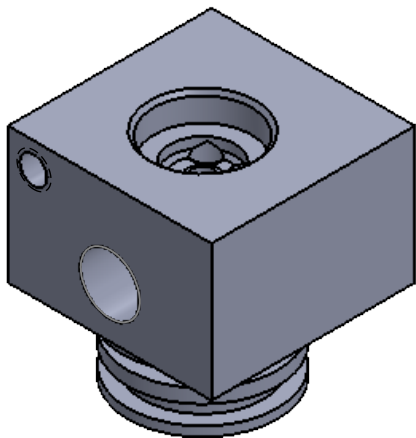
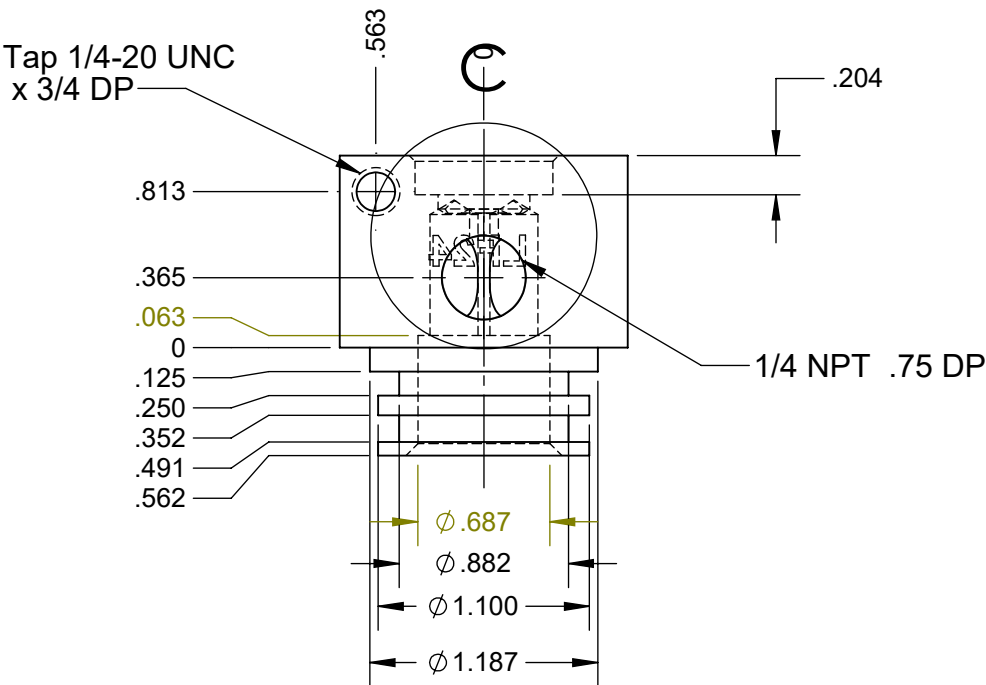
REV	DESCRIPTION	DATE	BY
B	Redrawn in Solid Works	2/29/16	BLS



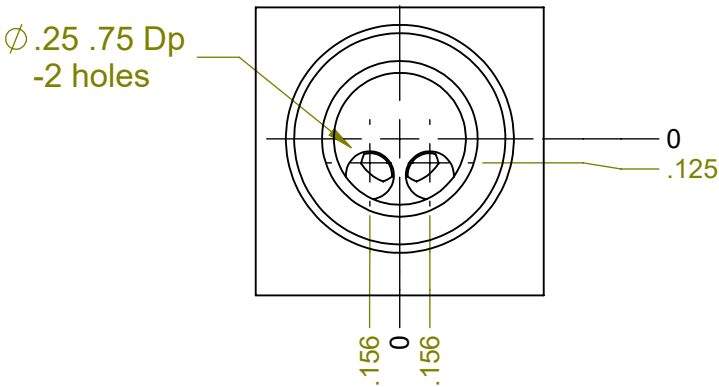
SECTION A-A



DETAIL C
SCALE 2 : 1



Material: Stainless Steel



UNLESS OTHERWISE SPECIFIED:		<div><div><div><div><div></div><div></div><div></div><div></div></div><div><div></div><div></div><div></div><div></div></div></div><div><div>ESTD 1978</div><div><div>CAPSTAN[®]</div><div>Ag Systems, Inc.</div></div></div></div><div><div>CAPSTAN AG SYSTEMS, INC.</div><div>4225 S.W. Kirklawn, TOPEKA, KS 66609</div></div></div>						
<div>DIMENSIONS ARE IN INCHES</div> <div>TOLERANCES:</div> <div>FRACTIONAL ±</div> <div>ANGULAR: MACH ± BEND ±</div> <div>TWO PLACE DECIMAL ±</div> <div>THREE PLACE DECIMAL ±</div> <div>INTERPRET GEOMETRIC TOLERANCING PER:</div>			Name	Date	<div>TITLE:</div> <div>Valve Body</div> <div>5/32" Orifice N-Ject</div> <div>For Wilger Flow Indicator</div>			
		Drawn	BLS	4/3/14				
		Checked						
		QA APP						
MATERIAL				SIZE	DWG No:	625010-011	REV	1
FINISH				B				
DO NOT SCALE DRAWING		SCALE: None					SHEET 1 of 1	