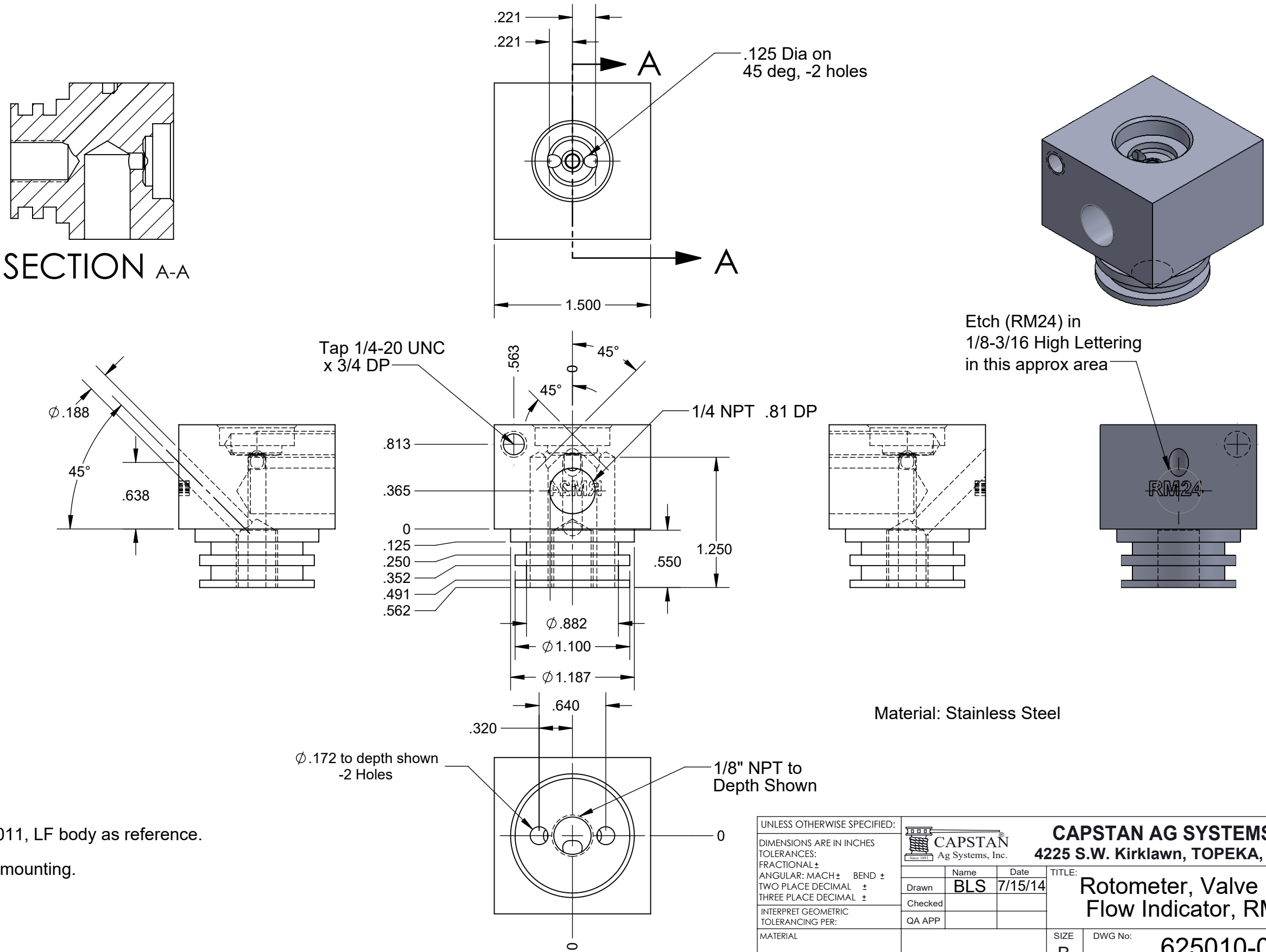



PROPRIETARY AND CONFIDENTIAL
 THE INFORMATION CONTAINED IN THIS DRAWING IS THE SOLE PROPERTY OF
 CAPSTAN AG INC. ANY REPRODUCTION IN PART OR AS A WHOLE
 WITHOUT WRITTEN PERMISSION OF CAPSTAN AG INC IS PROHIBITED

REV	ECR	DESCRIPTION	DATE	BY
A	1029	Production Release	12/30/14	BLS
B	2044	Added Stamping	8/4/16	BLS



- Notes:
1. Use part number 625010-011, LF body as reference.
 2. Part used for inlet sensor mounting.

UNLESS OTHERWISE SPECIFIED:		 CAPSTAN[®] Ag Systems, Inc.		CAPSTAN AG SYSTEMS, INC. 4225 S.W. Kirklawn, TOPEKA, KS 66609													
DIMENSIONS ARE IN INCHES		<table><tr><td></td><td>Name</td><td>Date</td></tr><tr><td>Drawn</td><td>BLS</td><td>7/15/14</td></tr><tr><td>Checked</td><td></td><td></td></tr><tr><td>QA APP</td><td></td><td></td></tr></table>			Name	Date	Drawn	BLS	7/15/14	Checked			QA APP			TITLE: Rotometer, Valve Body, Flow Indicator, RM24	
	Name			Date													
Drawn	BLS			7/15/14													
Checked																	
QA APP																	
TOLERANCES:																	
FRACTIONAL ±																	
ANGULAR: MACH ± BEND ±																	
TWO PLACE DECIMAL ±																	
THREE PLACE DECIMAL ±																	
INTERPRET GEOMETRIC TOLERANCING PER:																	
MATERIAL				SIZE	DWG No:	625010-005	REV B										
FINISH				B													
DO NOT SCALE DRAWING				SCALE: None			SHEET 1 of 1										