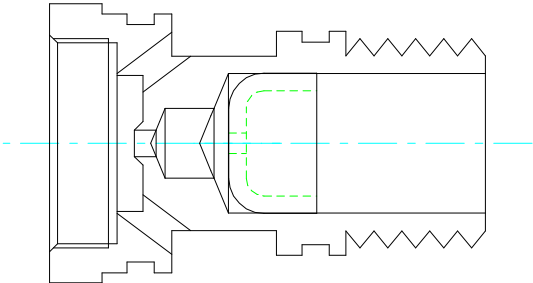
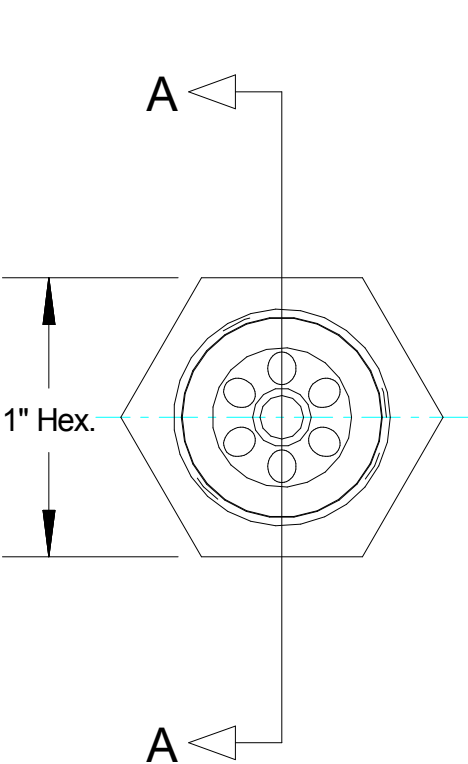
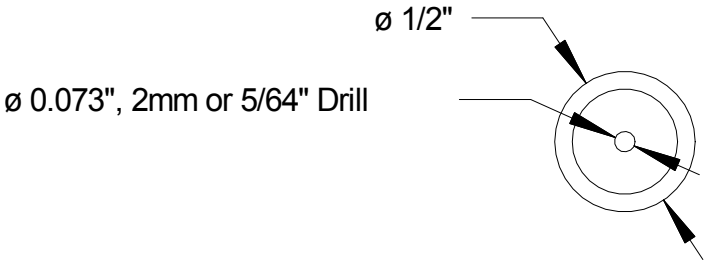


REV	DESCRIPTION	DATE	BY
1	Prototype Release	4/06/11	JJG

ID	PART NUMBER	DESCRIPTION	QTY
1	620207-002	Plug, Deep Cup, 1/2", Steel	1
2	620208-001	Valve Body-NH3,3/32 Orifice	1
3			



Section A-A
Scale 1.5:1



Drill plug, as shown. Then drive into the back bore against bottom of hole, as close to valve orifice as possible, to provide half rate.

CAPSTAN AG SYSTEMS, INC. 101 N. KANSAS AVE., TOPEKA, KS 66603					Valve Body - NH3 with 5/64 Orifice Insert
DATE	BY	SCALE	PAGE	SIZE	620209-001
4/06/11	RDC	NONE	1 OF 1	A	