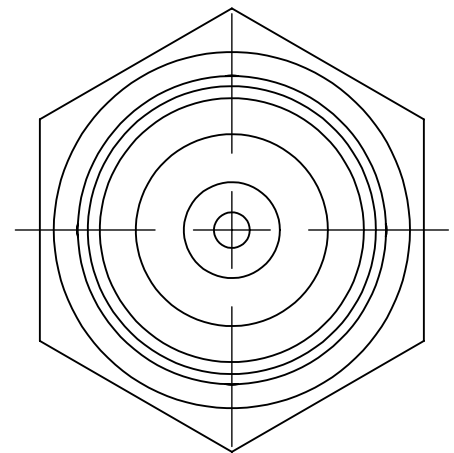
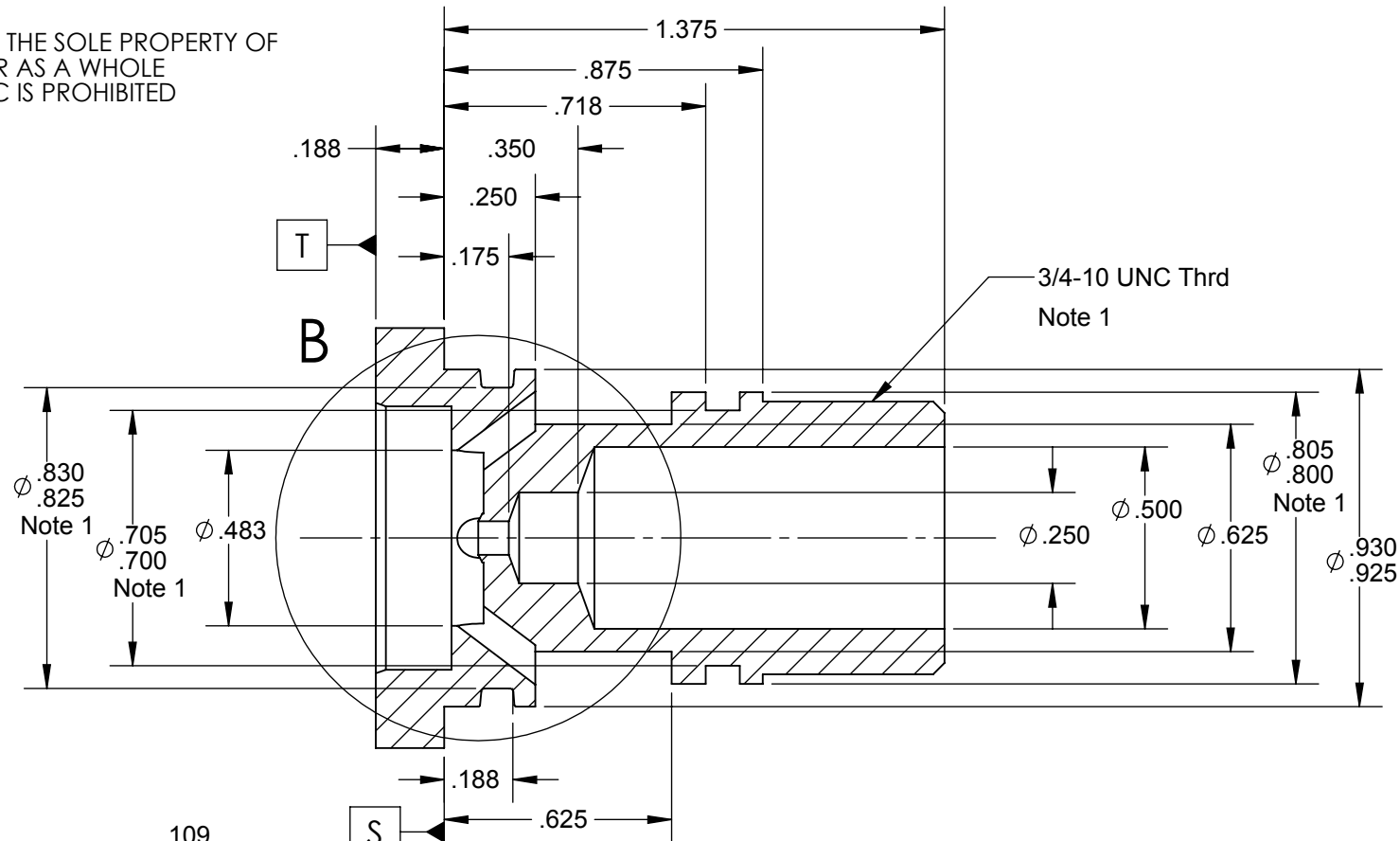
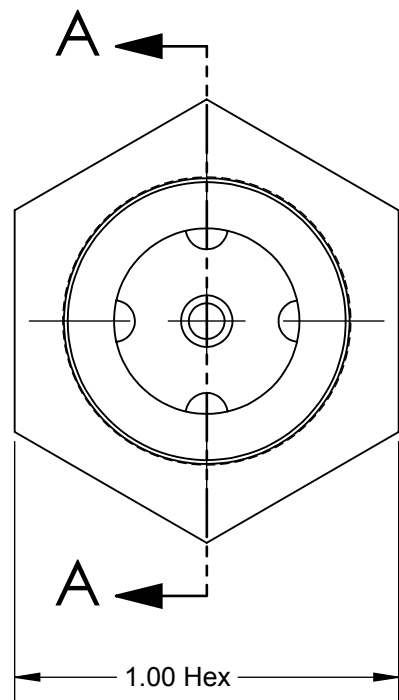
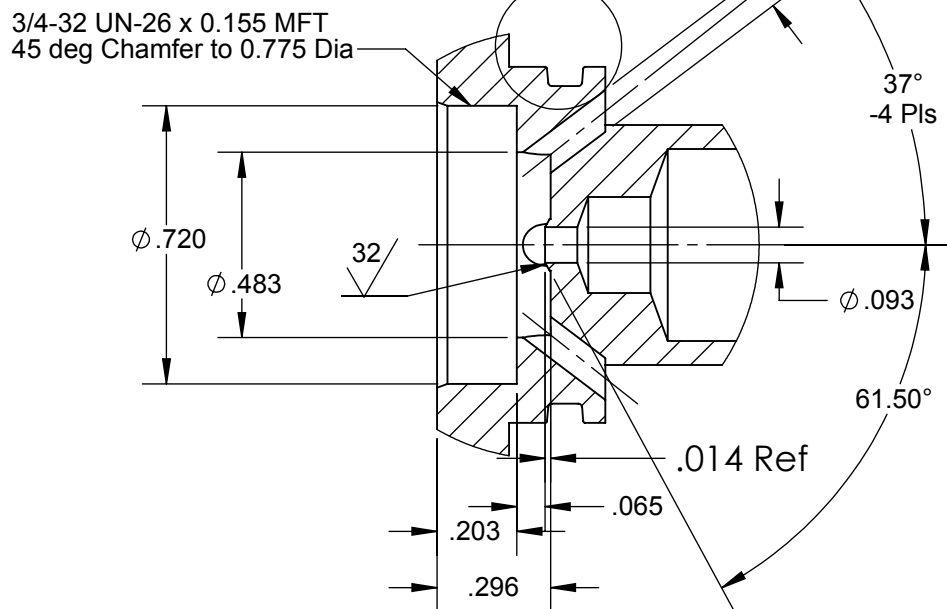


PROPRIETARY AND CONFIDENTIAL
THE INFORMATION CONTAINED IN THIS DRAWING IS THE SOLE PROPERTY OF
CAPSTAN AG INC. ANY REPRODUCTION IN PART OR AS A WHOLE
WITHOUT WRITTEN PERMISSION OF CAPSTAN AG INC IS PROHIBITED

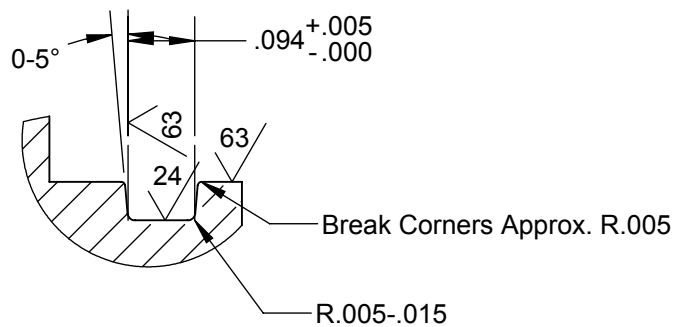
REV	DESCRIPTION	DATE	BY
D	Redrawn in SolidWorks	5/15/13	BLS



SECTION A-A



DETAIL B




DETAIL C
SCALE 4 : 1

Notes:

1. Center Concentric Diameters Within 0.002"

All Cavity Dimensions Shown are Reference For Detailed Cavity Dimensions
Kip Incorporated
72 Spring Lane
Farmington, CT 06032
800-722-5547
Drawing B-73212, MS-0108
Cavity Tooling Required

UNLESS OTHERWISE SPECIFIED:		 CAPSTAN Ag Systems, Inc.		CAPSTAN AG SYSTEMS, INC. 101 N. KANSAS AVE., TOPEKA, KS 66603													
DIMENSIONS ARE IN INCHES		<table><tr><td></td><td>Name</td><td>Date</td></tr><tr><td>Drawn</td><td>JJG</td><td>11/15/01</td></tr><tr><td>Checked</td><td></td><td></td></tr><tr><td>QA APP</td><td></td><td></td></tr></table>			Name	Date	Drawn	JJG	11/15/01	Checked			QA APP			TITLE: Valve Body, NH3 3/32" Orifice	
	Name			Date													
Drawn	JJG			11/15/01													
Checked																	
QA APP																	
TOLERANCES:																	
FRACTIONAL ±																	
ANGULAR: MACH ± BEND ±																	
TWO PLACE DECIMAL ±																	
THREE PLACE DECIMAL ±0.005																	
INTERPRET GEOMETRIC TOLERANCING PER:																	
MATERIAL Stainless Steel				SIZE B	DWG No: 620208-001	REV D											
FINISH																	
DO NOT SCALE DRAWING		SCALE: None			SHEET 1 of 1												