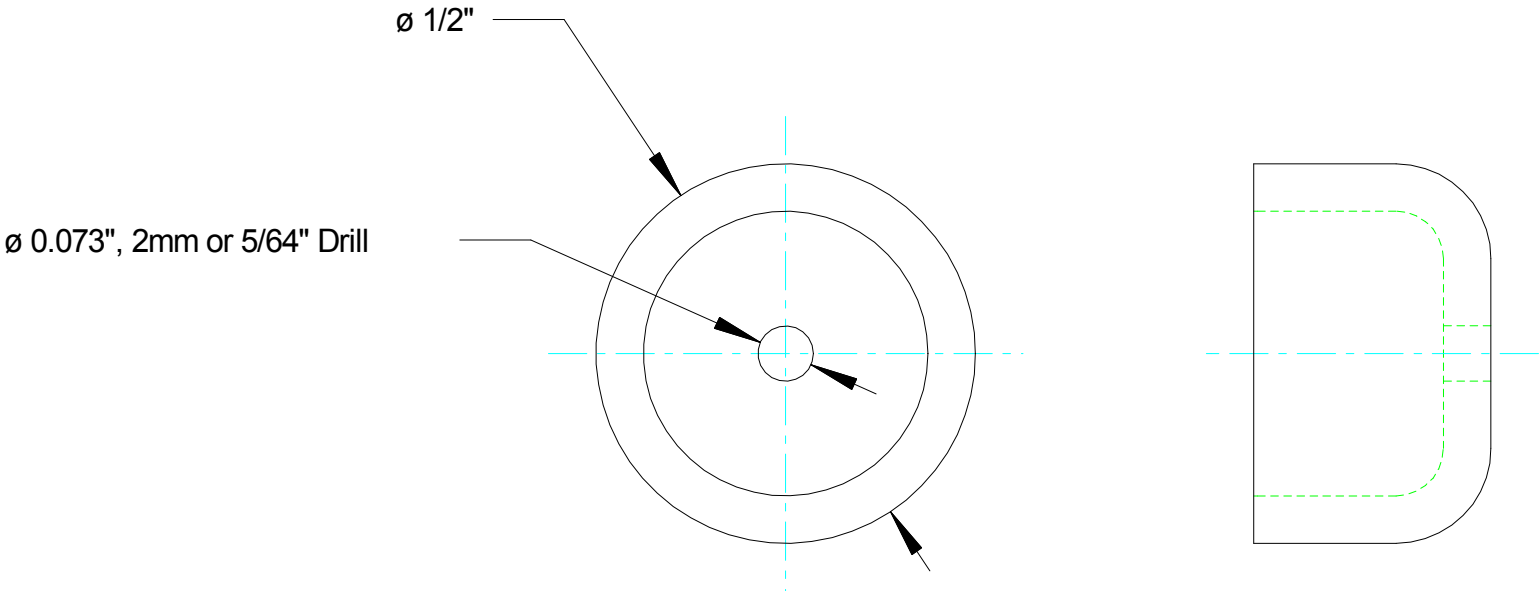


REV	DESCRIPTION	DATE	BY
1	Prototype Release	03/20/09	JJG
A	Production Release	4/06/11	RDC

ID	PART NUMBER	DESCRIPTION	QTY
1	620207-002	Plug, Deep Cup, 1/2", Steel	1

Drill plug as shown. Install by driving into the back bore of a 3/32" NH3 valve to provide half-rate. Drive plug until it stops against bottom of hole, as close to valve orifice as possible.



CAPSTAN AG SYSTEMS, INC. 101 N. KANSAS AVE., TOPEKA, KS 66603					Orifice, 5/64, Half Rate for 3/32 NH3 Valve
DATE	BY	SCALE	PAGE	SIZE	620207-001
03/20/09	JJG	NONE	1 OF 1	A	