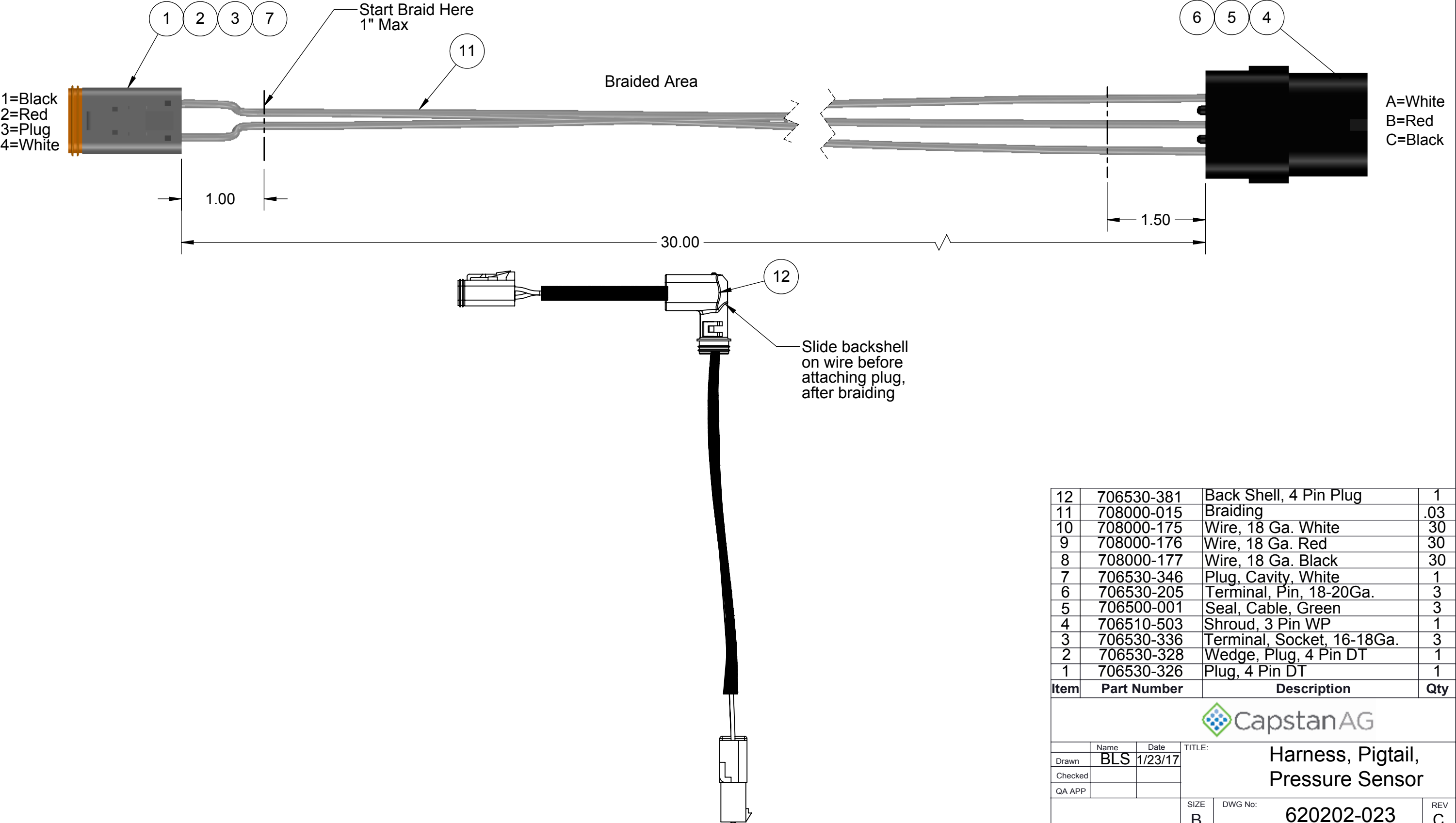


PROPRIETARY AND CONFIDENTIAL
 THE INFORMATION CONTAINED IN THIS DRAWING IS THE SOLE PROPERTY OF
 CAPSTAN AG INC. ANY REPRODUCTION IN PART OR AS A WHOLE
 WITHOUT WRITTEN PERMISSION OF CAPSTAN AG INC IS PROHIBITED

Rev	ECR	Description	Date	By	App
A	2106	Production Release	1/23/17	BLS	
B	2180	Added Item 12, Back Shell	6/5/17	BLS	
C	2235	Dim, 1.00 was 1.50, Added Note	10/25/17	BLS	



12	706530-381	Back Shell, 4 Pin Plug	1
11	708000-015	Braiding	.03
10	708000-175	Wire, 18 Ga. White	30
9	708000-176	Wire, 18 Ga. Red	30
8	708000-177	Wire, 18 Ga. Black	30
7	706530-346	Plug, Cavity, White	1
6	706530-205	Terminal, Pin, 18-20Ga.	3
5	706500-001	Seal, Cable, Green	3
4	706510-503	Shroud, 3 Pin WP	1
3	706530-336	Terminal, Socket, 16-18Ga.	3
2	706530-328	Wedge, Plug, 4 Pin DT	1
1	706530-326	Plug, 4 Pin DT	1

Item	Part Number	Description	Qty
<div> </div>			
Drawn	Name BLS	Date 1/23/17	TITLE: Harness, Pigtail, Pressure Sensor
Checked			
QA APP			
		SIZE B	DWG No: 620202-023
		SCALE: None	REV C
			SHEET 1 of 1