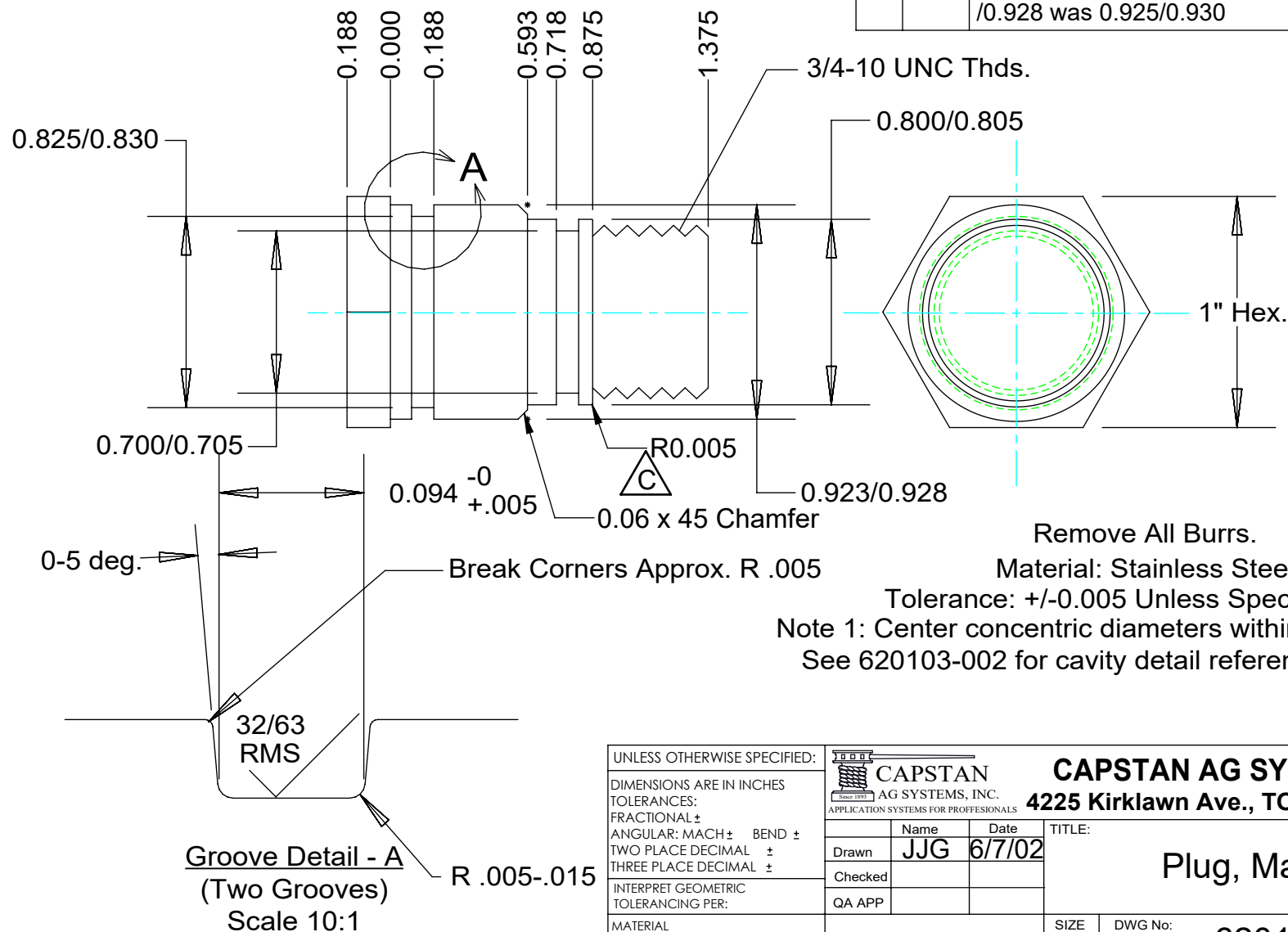


**PROPRIETARY AND CONFIDENTIAL**

THE INFORMATION CONTAINED IN THIS DRAWING IS THE SOLE PROPERTY OF CAPSTAN AG INC. ANY REPRODUCTION IN PART OR AS A WHOLE WITHOUT WRITTEN PERMISSION OF CAPSTAN AG INC IS PROHIBITED

REV	ECR	DESCRIPTION	DATE	BY
C	1094	Redrawn in Solid Works, Added Chamfer & R call out, Dim, 0.923 /0.928 was 0.925/0.930	1/6/16	BLS



Remove All Burrs.

Material: Stainless Steel

Tolerance: +/-0.005 Unless Specified Otherwise

Note 1: Center concentric diameters within 0.002" Dia.

See 620103-002 for cavity detail reference.

**Groove Detail - A**  
(Two Grooves)  
Scale 10:1

R .005-.015

UNLESS OTHERWISE SPECIFIED:

DIMENSIONS ARE IN INCHES

TOLERANCES:

FRACTIONAL ±

ANGULAR: MACH ± BEND ±

TWO PLACE DECIMAL ±

THREE PLACE DECIMAL ±

INTERPRET GEOMETRIC

TOLERANCING PER:

MATERIAL

FINISH

DO NOT SCALE DRAWING



**CAPSTAN AG SYSTEMS, INC.**  
4225 Kirklawn Ave., TOPEKA, KS 66609

Name	Date
Drawn JJG	6/7/02
Checked	
QA APP	

TITLE:	
Plug, Machined	

SIZE	DWG No:	REV
A	620107-001	C
SCALE: None		SHEET 1 of 1