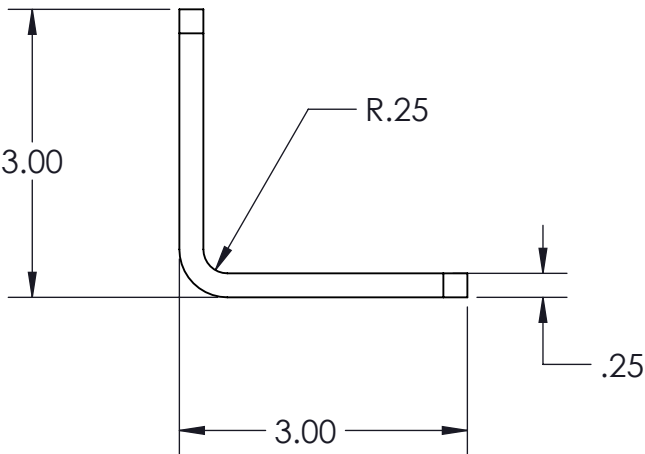
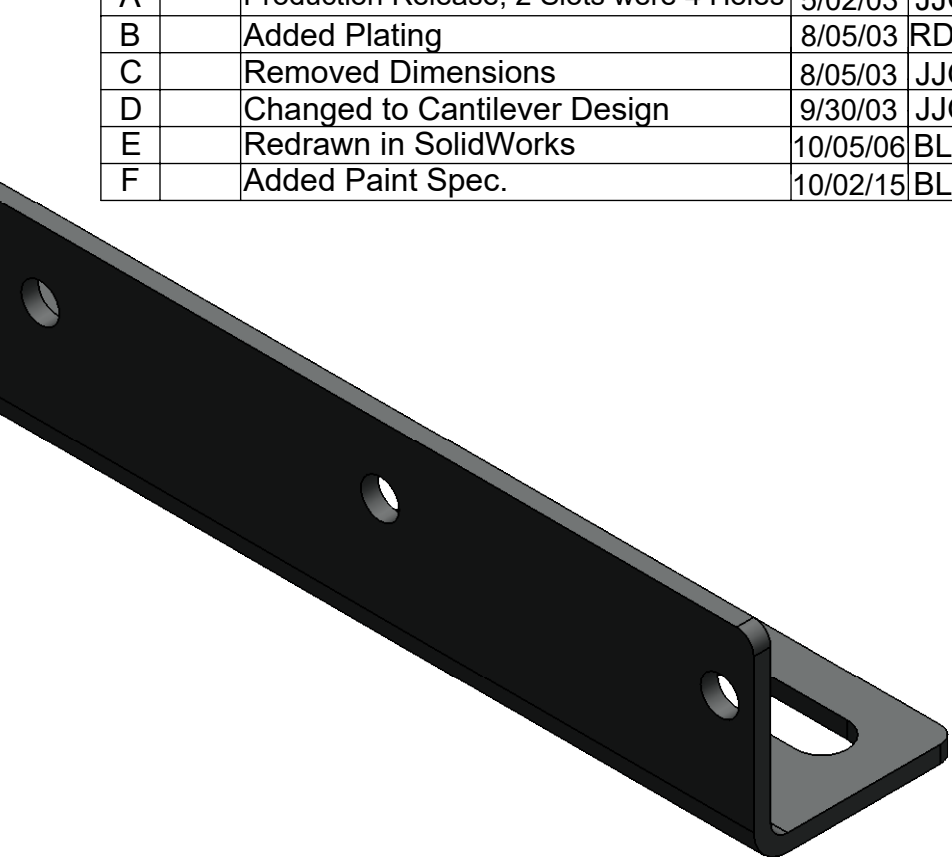
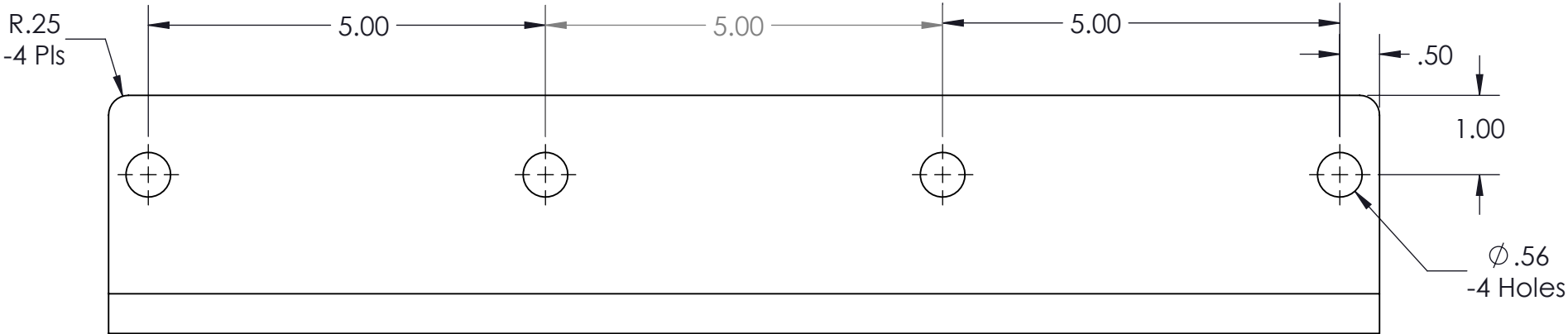
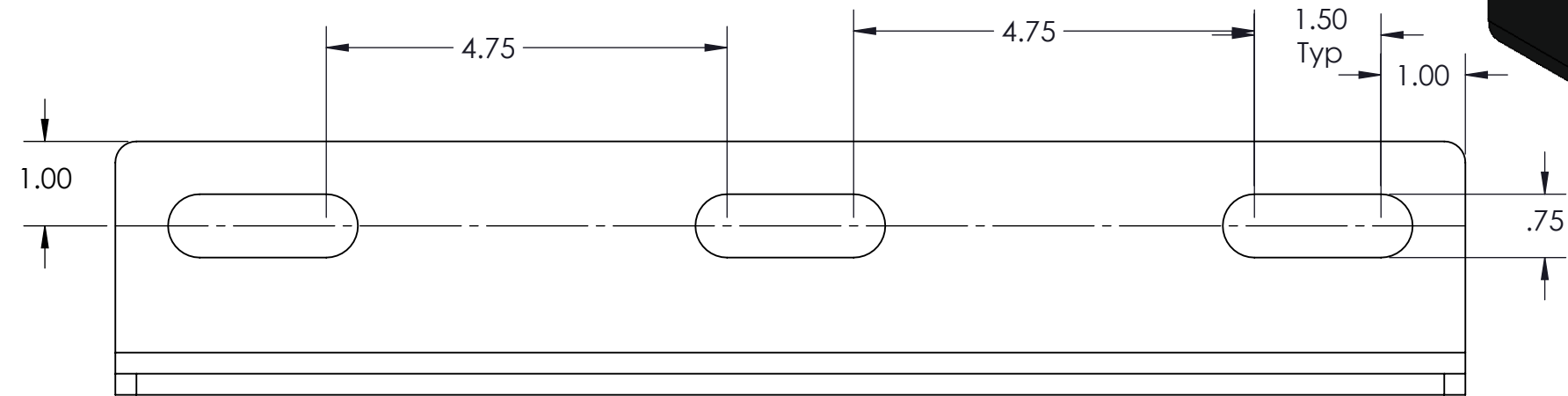



**PROPRIETARY AND CONFIDENTIAL**  
THE INFORMATION CONTAINED IN THIS DRAWING IS THE SOLE PROPERTY OF  
CAPSTAN AG INC. ANY REPRODUCTION IN PART OR AS A WHOLE  
WITHOUT WRITTEN PERMISSION OF CAPSTAN AG INC IS PROHIBITED

REV	ECR	DESCRIPTION	DATE	BY
A		Production Release, 2 Slots were 4 Holes	5/02/03	JJG
B		Added Plating	8/05/03	RDC
C		Removed Dimensions	8/05/03	JJG
D		Changed to Cantilever Design	9/30/03	JJG
E		Redrawn in SolidWorks	10/05/06	BLS
F		Added Paint Spec.	10/02/15	BLS



Finish: Powder Coat Charcol Gray over Zinc Plate

UNLESS OTHERWISE SPECIFIED:		 <b>CAPSTAN</b> Ag Systems, Inc.		<b>CAPSTAN AG SYSTEMS, INC.</b> <b>101 N. KANSAS AVE., TOPEKA, KS 66603</b>	
DIMENSIONS ARE IN INCHES		Name		TITLE:	
TOLERANCES:		Date		Mounting Bracket Manifold, Plated	
FRACTIONAL ± 1/64		Drawn JJG 11/30/01			
ANGULAR: MACH ± BEND ±		Checked			
TWO PLACE DECIMAL ± .01		QA APP			
THREE PLACE DECIMAL ± .005					
INTERPRET GEOMETRIC TOLERANCING PER:					
MATERIAL Steel 1020				SIZE B	REV F
FINISH Zinc Plate, Clear DO NOT SCALE DRAWING				DWG No: 620106-001	
				SCALE: 1/2	SHEET 1 of 1