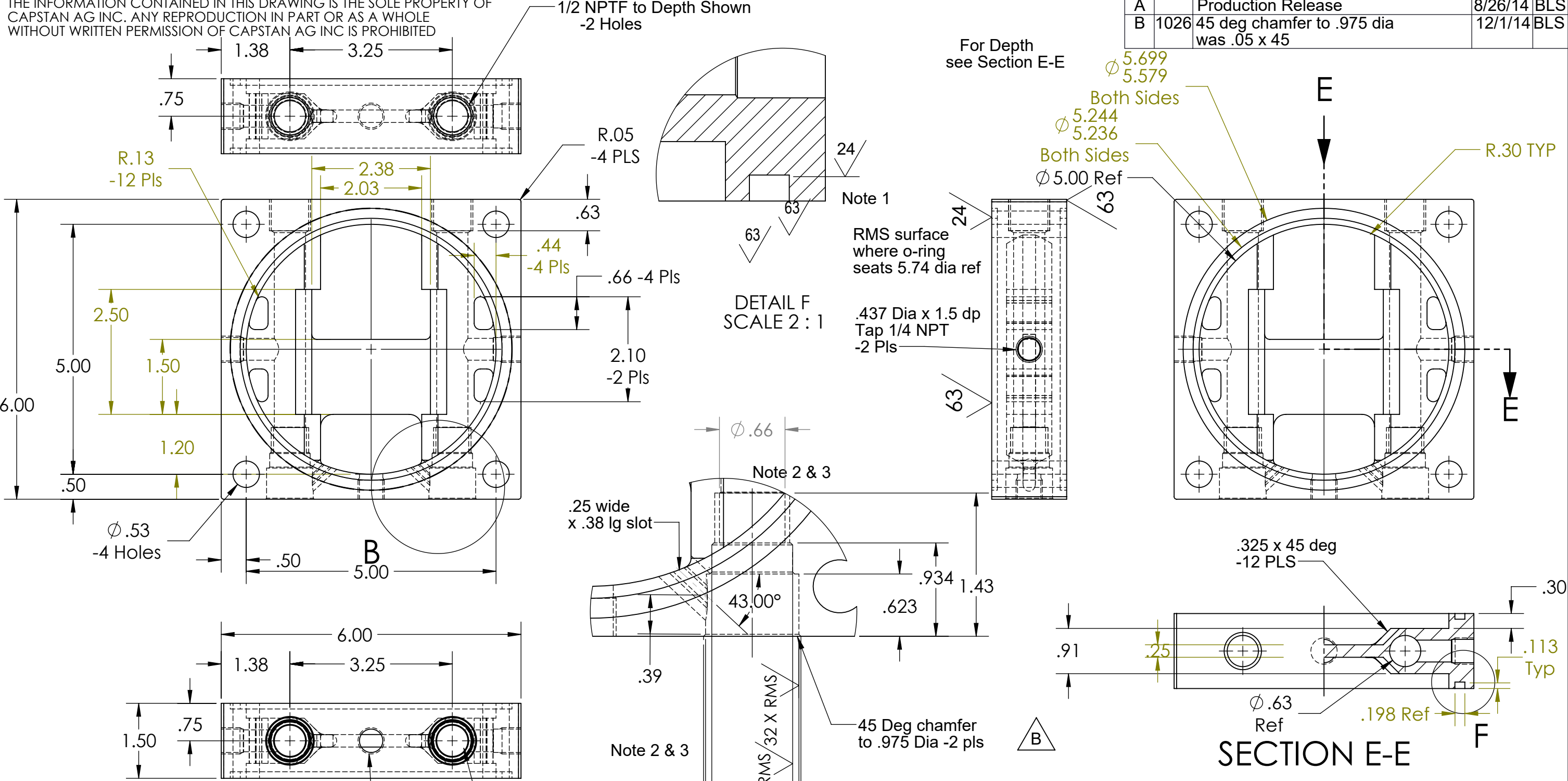


PROPRIETARY AND CONFIDENTIAL
THE INFORMATION CONTAINED IN THIS DRAWING IS THE SOLE PROPERTY OF
CAPSTAN AG INC. ANY REPRODUCTION IN PART OR AS A WHOLE
WITHOUT WRITTEN PERMISSION OF CAPSTAN AG INC IS PROHIBITED

REV	ECR	DESCRIPTION	DATE	BY
A		Production Release	8/26/14	BLS
B	1026	45 deg chamfer to .975 dia was .05 x 45	12/1/14	BLS



- Notes
- No porosity marks allowed in groove.
 - Center concentric bores within 0.002 dia.
 - No porosity marks allowed on on seal surfaces marked "X"
 - Parts must not leak during 300psi water test.

DETAIL B
SCALE 1 : 1
-2 Pls

UNLESS OTHERWISE SPECIFIED:		CAPSTAN Ag Systems, Inc.		CAPSTAN AG SYSTEMS, INC. 4225 S.W. Kirklawn Ave, TOPEKA, KS 66609	
DIMENSIONS ARE IN INCHES TOLERANCES: FRACTIONAL ± ANGULAR: MACH ±1/2 BEND ± TWO PLACE DECIMAL ±0.01 THREE PLACE DECIMAL ±0.005 INTERPRET GEOMETRIC TOLERANCING PER:		Name	Date	TITLE:	
MATERIAL		Drawn	BLS	8/26/14	
FINISH		Checked			
DO NOT SCALE DRAWING		QA APP			
		SIZE	B	DWG No:	620104-002
		SCALE:	None	REV	B
				SHEET 1 of 1	