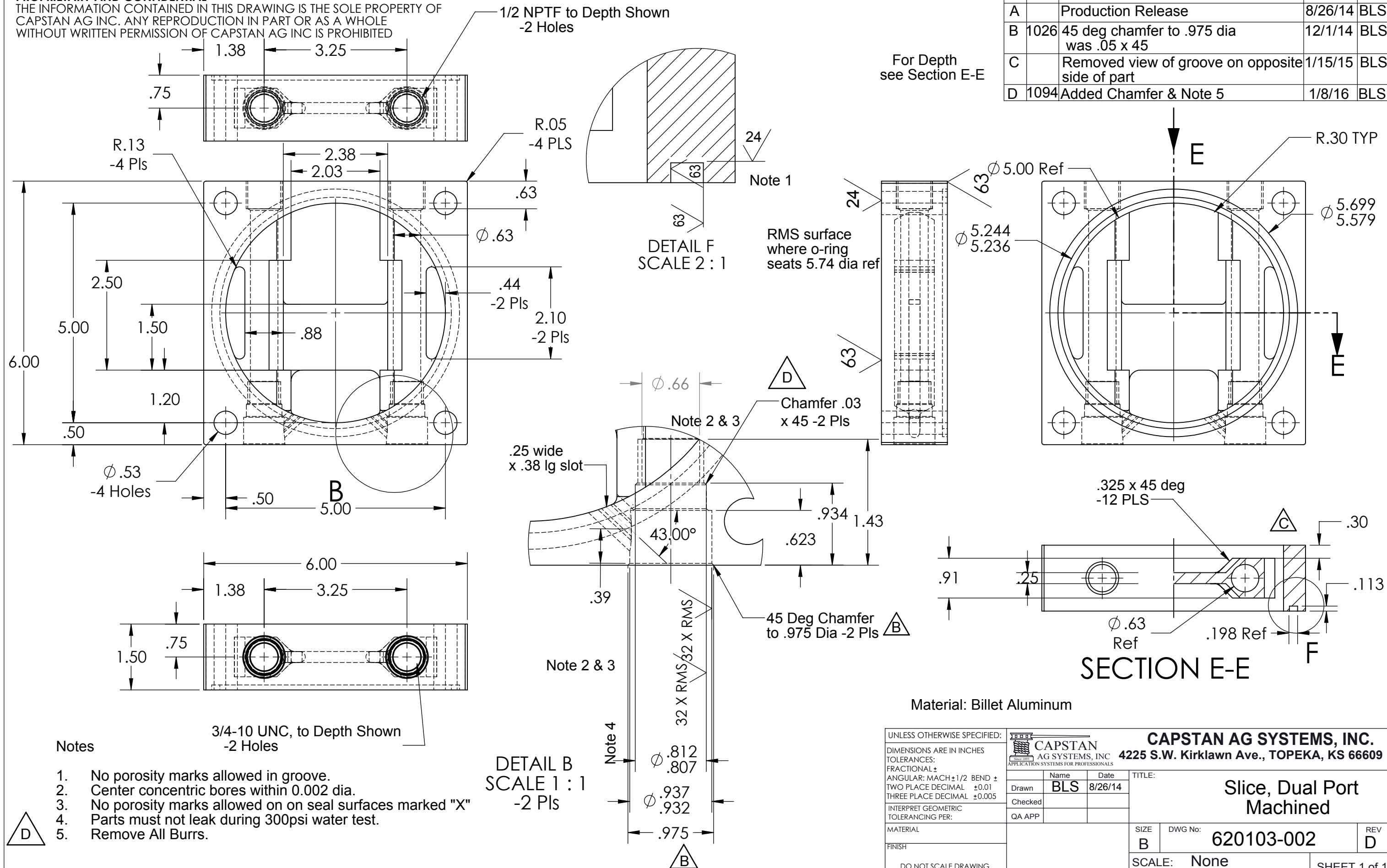


THE INFORMATION CONTAINED IN THIS DRAWING IS THE SOLE PROPERTY OF
CAPSTAN AG INC. ANY REPRODUCTION IN PART OR AS A WHOLE
WITHOUT WRITTEN PERMISSION OF CAPSTAN AG INC IS PROHIBITED

REV	ECR	DESCRIPTION	DATE	BY
A		Production Release	8/26/14	BLS
B	1026	45 deg chamfer to .975 dia was .05 x 45	12/1/14	BLS
C		Removed view of groove on opposite side of part	1/15/15	BLS
D	1094	Added Chamfer & Note 5	1/8/16	BLS



Material: Billet Aluminum

UNLESS OTHERWISE SPECIFIED:

DIMENSIONS ARE IN INCHES TOLERANCES: FRACTIONAL ± ANGULAR: MACH ±1/2 BEND ± TWO PLACE DECIMAL ±0.01 THREE PLACE DECIMAL ±0.005
INTERPRET GEOMETRIC TOLERANCING PER:
MATERIAL
FINISH
DO NOT SCALE DRAWING



CAPSTAN AG SYSTEMS, INC.
4225 S.W. Kirklawn Ave., TOPEKA, KS 66609

TITLE:

	Name	Date
Drawn	BLS	8/26/14
Checked		
QA APP		

SIZE B	DWG No: 620103-002	REV D
SCALE: None		SHEET 1 of 1