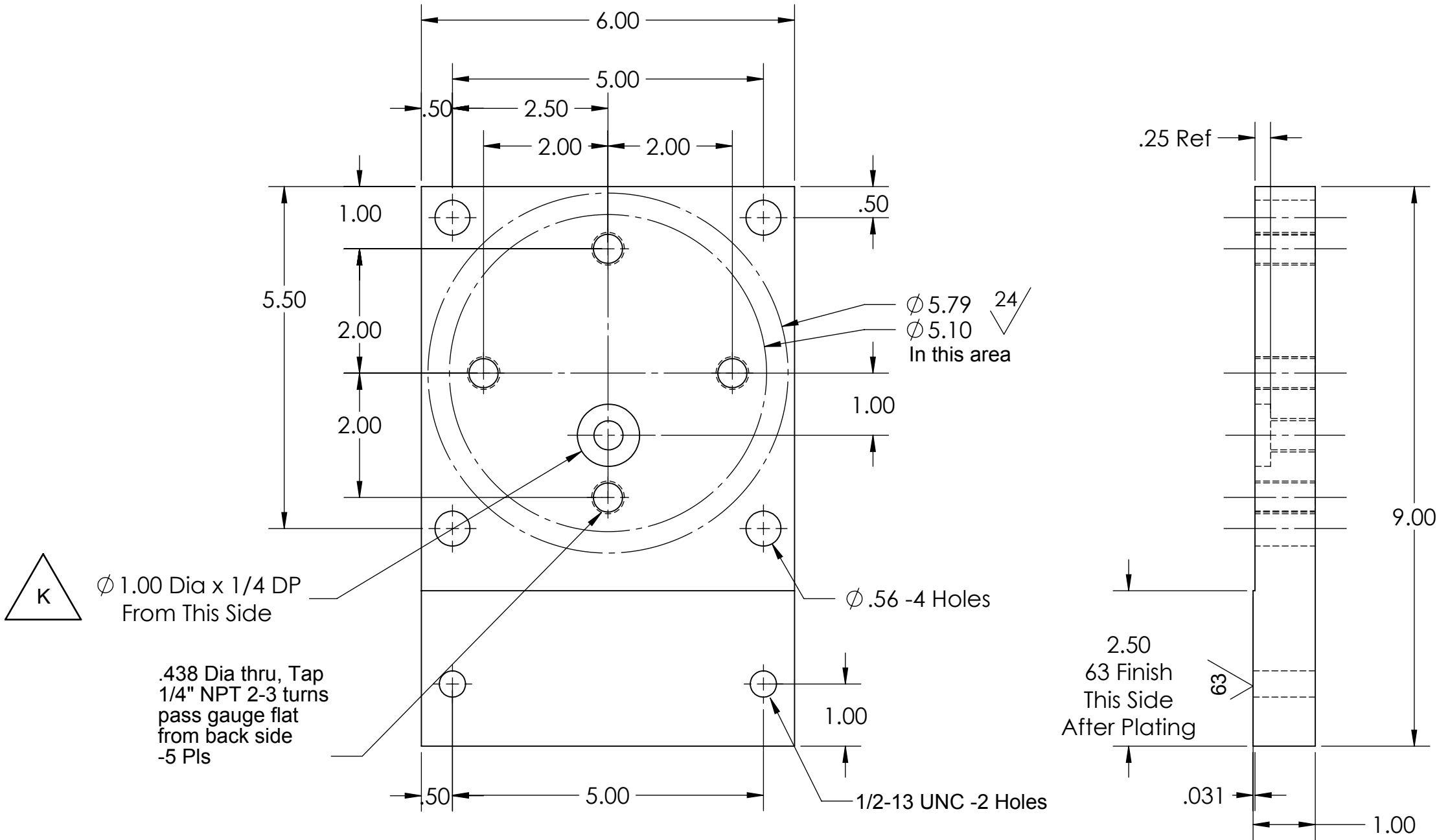



**PROPRIETARY AND CONFIDENTIAL**  
 THE INFORMATION CONTAINED IN THIS DRAWING IS THE SOLE PROPERTY OF  
 CAPSTAN AG INC. ANY REPRODUCTION IN PART OR AS A WHOLE  
 WITHOUT WRITTEN PERMISSION OF CAPSTAN AG INC IS PROHIBITED

REV	ECR	DESCRIPTION	DATE	BY
J		Redrawn in SolidWorks	5/10/13	BLS
K	2047	Added Extra Hole for XLS Sensor	8/19/16	BLS



**Notes:**

1. Flame Cut Perimeter Permitted.
2. Finish: Clear Zinc Plate except for machined area wich must be masked off.

UNLESS OTHERWISE SPECIFIED:		 <b>CAPSTAN AG SYSTEMS, INC.</b> 101 N. KANSAS AVE., TOPEKA, KS 66603	
DIMENSIONS ARE IN INCHES TOLERANCES: FRACTIONAL ± ANGULAR: MACH ± BEND ± TWO PLACE DECIMAL ±0.03 THREE PLACE DECIMAL ±0.010 INTERPRET GEOMETRIC TOLERANCING PER:		Name <b>JJG</b>	Date 10/31/00
MATERIAL <b>C.F. Stl</b>		TITLE: <b>Manifold Flange End, Plated</b>	
FINISH DO NOT SCALE DRAWING		SIZE <b>B</b>	DWG No: <b>620101-001</b>
		SCALE: <b>None</b>	REV <b>K</b>
		SHEET 1 of 1	