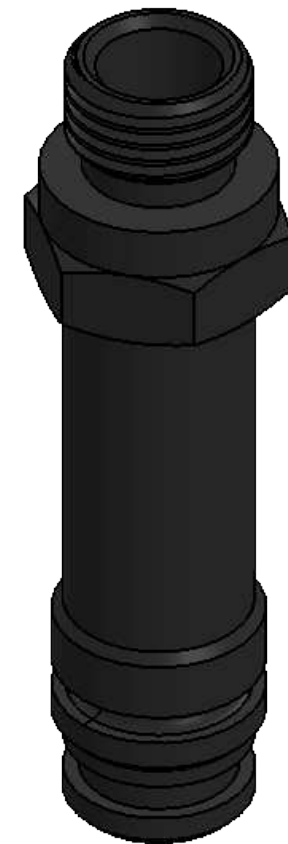
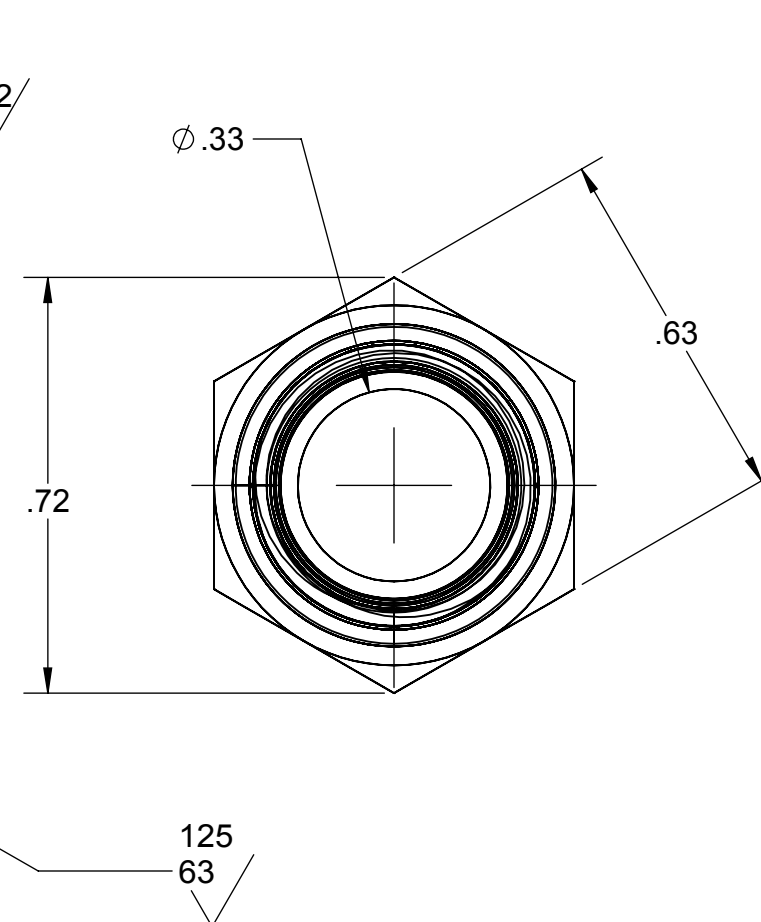
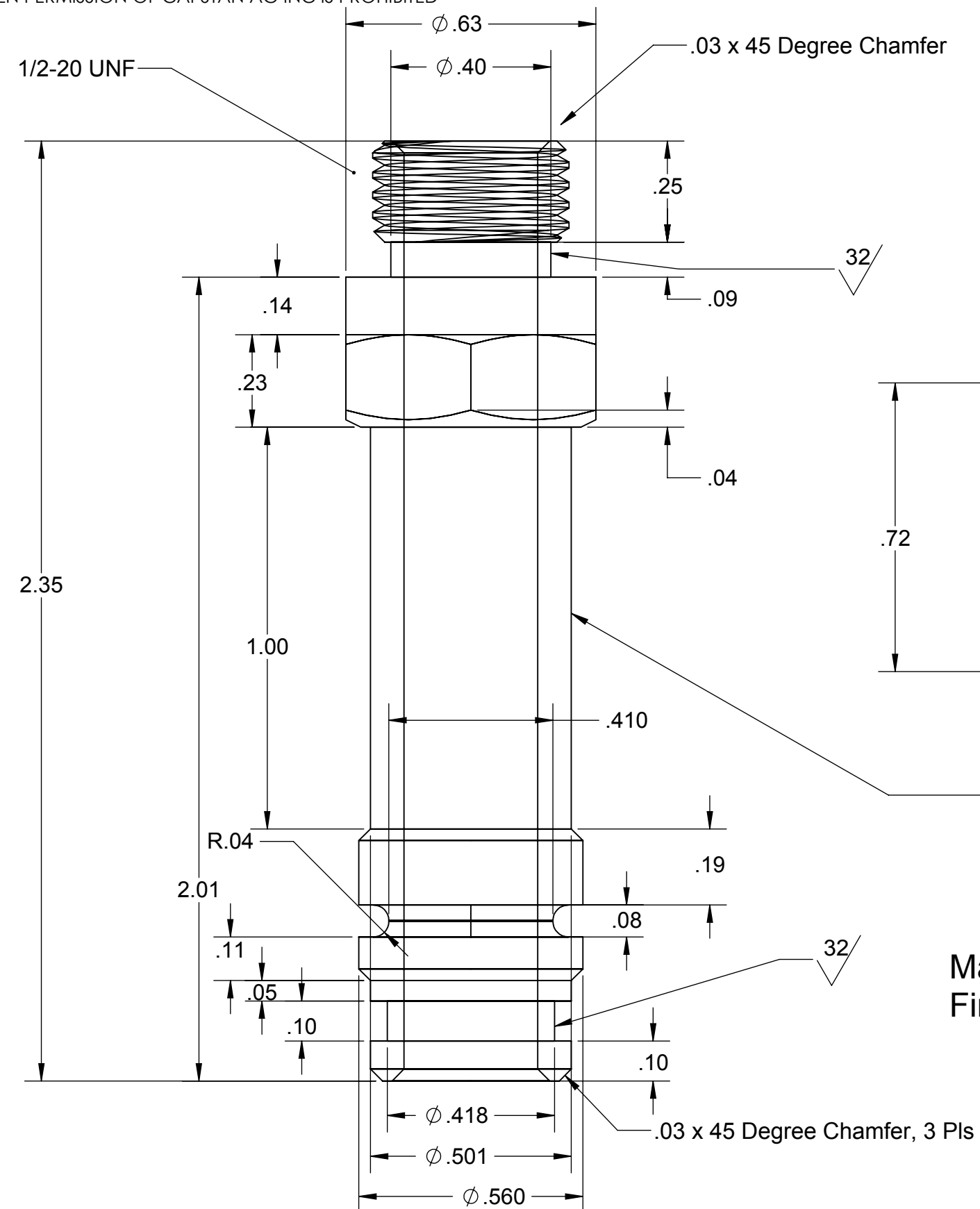



THE INFORMATION CONTAINED IN THIS DRAWING IS THE SOLE PROPERTY OF
CAPSTAN AG INC. ANY REPRODUCTION IN PART OR AS A WHOLE
WITHOUT WRITTEN PERMISSION OF CAPSTAN AG INC IS PROHIBITED

Rev	ECR	Description	Date	By	App
C	2300	Redesigned & Redrawn	4/2/18	SEM	



Material: Aluminum 6061-T6

Finish: Black Hard Coat Anodize per MIL-A-8625, Type III, Class 2

UNLESS OTHERWISE SPECIFIED:			
DIMENSIONS ARE IN INCHES			
TOLERANCES:		TITLE: SAE -5 Double O-Ring Transfer Tube, Rev C	
FRACTIONAL ±			
ANGULAR: MACH ± BEND ±			
TWO PLACE DECIMAL ± .01			
THREE PLACE DECIMAL ± .003		SIZE B DWG No: 320015-005 REV C	
INTERPRET GEOMETRIC TOLERANCING PER:			
MATERIAL			
FINISH		SCALE: None SHEET 1 of 1	
DO NOT SCALE DRAWING			