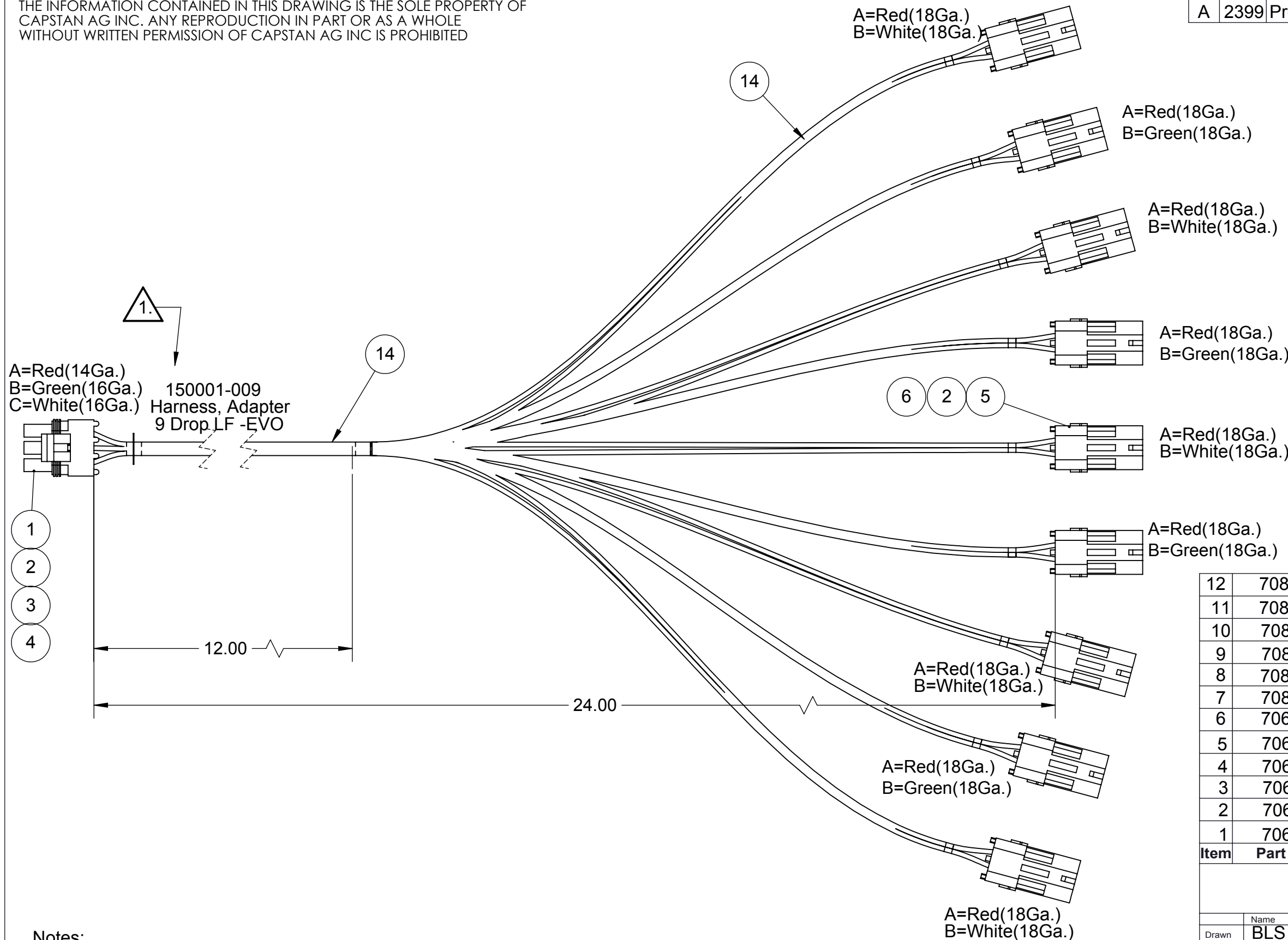


PROPRIETARY AND CONFIDENTIAL

THE INFORMATION CONTAINED IN THIS DRAWING IS THE SOLE PROPERTY OF CAPSTAN AG INC. ANY REPRODUCTION IN PART OR AS A WHOLE WITHOUT WRITTEN PERMISSION OF CAPSTAN AG INC IS PROHIBITED

Rev	ECR	Description	Date	By
A	2399	Production Release	2/5/19	BLS



12	708000-175	Wire, 18 Ga. White	75
11	708000-174	Wire, 18 Ga. Green	58
10	708000-176	Wire, 18 Ga. Red	153
9	708000-163	Wire, 16 Ga. White	12
8	708000-171	Wire, 16 Ga. Green	12
7	708000-157	Wire, 14 Ga. Red	12
6	706530-205	Terminal Pin, 16-18 Ga.	18
5	706510-502	Shroud, 2 Pin, WP	9
4	706530-210	Terminal Socket 14-16 Ga.	3
3	706500-002	Seal, Wire, 14 Ga. Gray	1
2	706500-001	Seal, Wire, 16-18 Ga. Green	20
1	706500-503	Tower, 3 Pin, WP	1
Item	Part Number	Description	Qty



Name	Date	TITLE:
Drawn BLS	2/5/19	Harness, Adapter 9 Drops, LF to EVO
Checked		
QA APP		
SIZE B	DWG No: 150001-009	REV A
SCALE: None		SHEET 1 of 1

14	708000-015	Braiding	.16
13	708000-159	Tube, Shrink, 3/16 x 1-1/4	12
Item	Part Number	Description	Qty

Notes:

1. Label as Required.