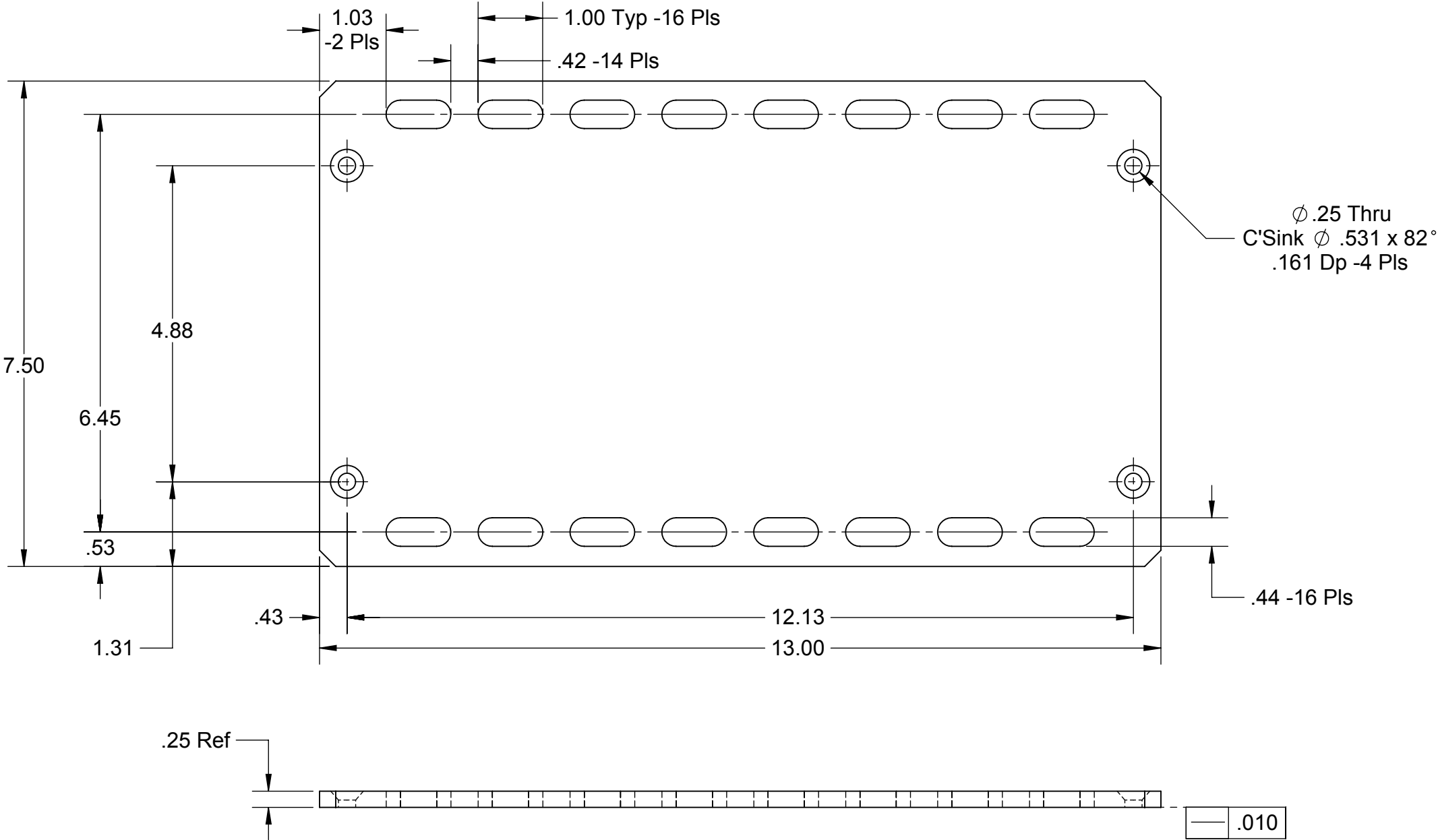



PROPRIETARY AND CONFIDENTIAL
 THE INFORMATION CONTAINED IN THIS DRAWING IS THE SOLE PROPERTY OF
 CAPSTAN AG INC. ANY REPRODUCTION IN PART OR AS A WHOLE
 WITHOUT WRITTEN PERMISSION OF CAPSTAN AG INC IS PROHIBITED

Rev	ECR	Description	Date	By	App
A	2038	Production Release	6/2/16	BLS	



Material: 1/4" H.R. Steel
 Finish: Powder Coat Black

UNLESS OTHERWISE SPECIFIED:		<div><div>CAPSTAN Ag Systems, Inc. APPLICATION SYSTEMS FOR PROFESSIONALS</div></div>		CAPSTAN AG SYSTEMS, INC. 4225 S.W. Kirklawn Ave., Topeka, KS 66609		
DIMENSIONS ARE IN INCHES TOLERANCES: FRACTIONAL ± ANGULAR: MACH ± BEND ± TWO PLACE DECIMAL ± THREE PLACE DECIMAL ± INTERPRET GEOMETRIC TOLERANCING PER:		<div><div>Drawn</div><div>Checked</div><div>QA APP</div></div>	<div><div>Name</div><div>AB</div></div> <div><div>Date</div><div>6/2/16</div></div>	TITLE: Back Plate Power Hub PP II		
MATERIAL						
FINISH				SIZE B	DWG No: 122101-002	REV A
DO NOT SCALE DRAWING		SCALE: None			SHEET 1 of 1	