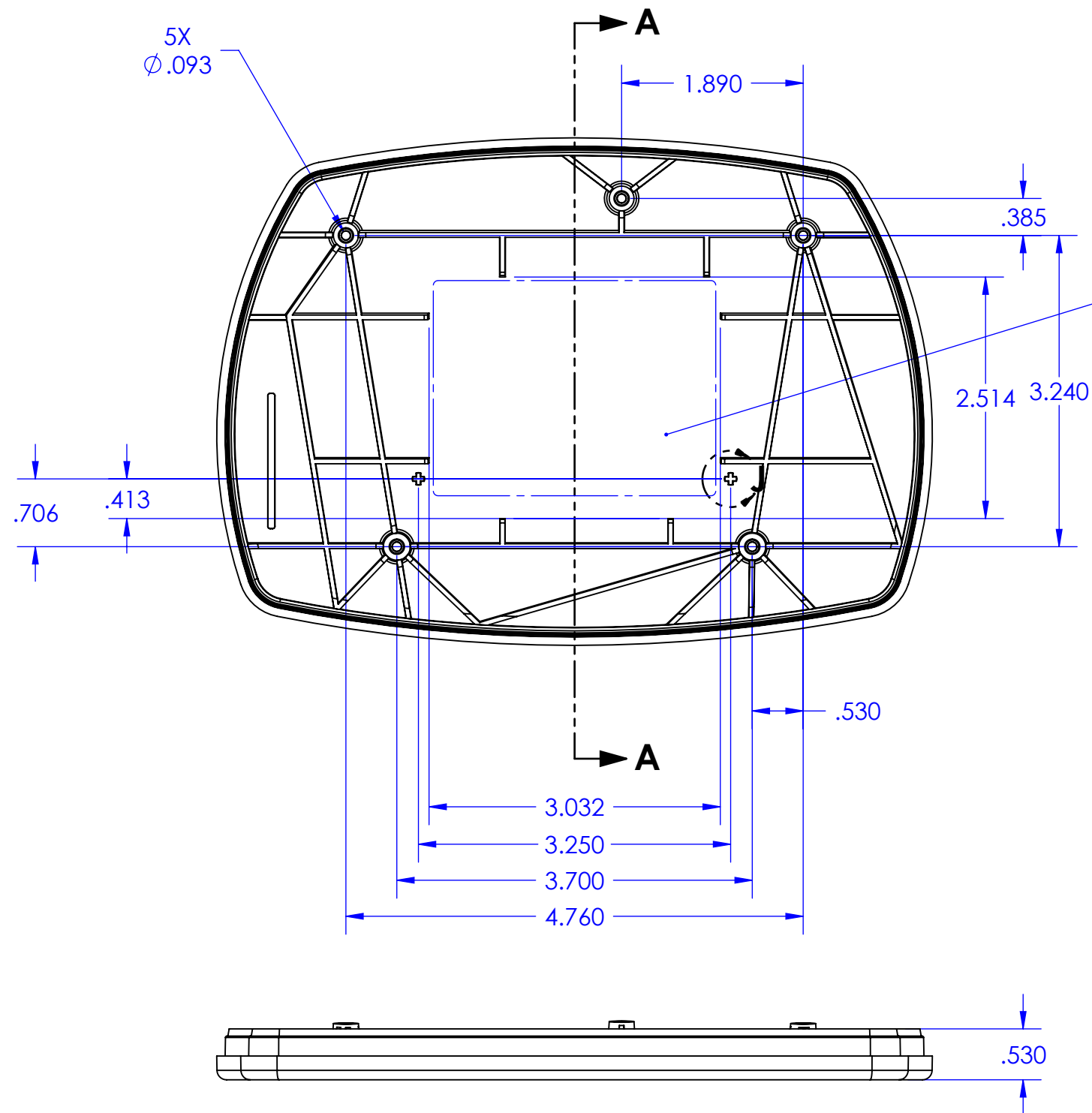
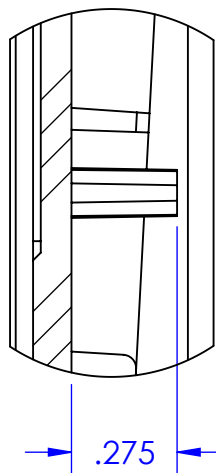


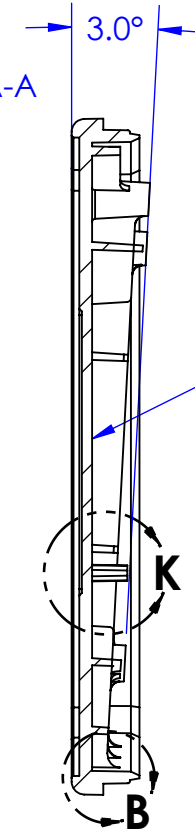
- 1 Acceptable Deformation from flat plane within window area specified is .006" maximum.  
Surface finish SPI-A2 (high polish for optical clarity thru part) on these faces only  
No tooling marks are to appear on these faces.
2. No air bubbles permitted around edges. Ensure complete mold filling.



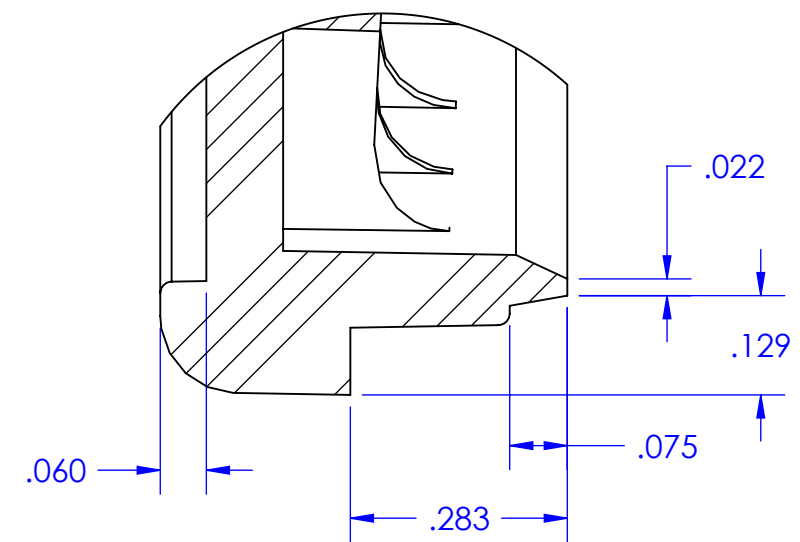
DETAIL K  
SCALE 2 : 1



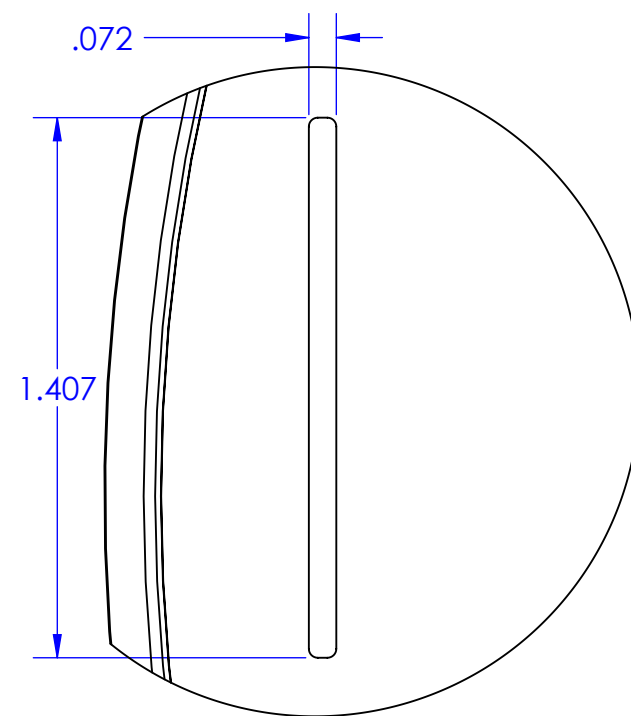
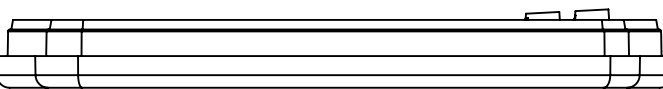
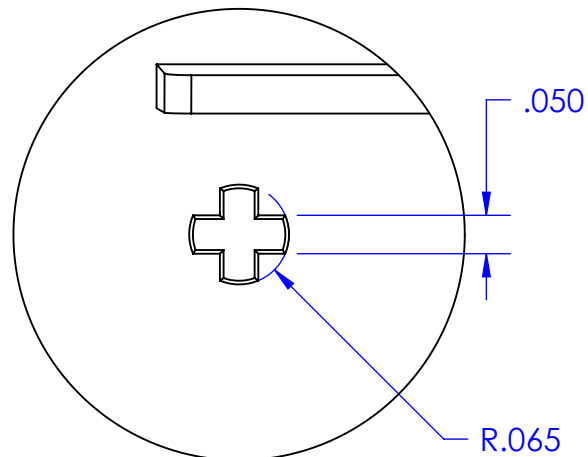
SECTION A-A



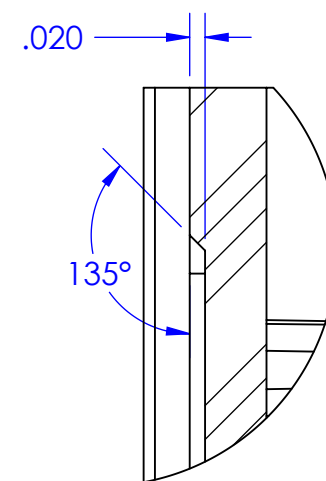
DETAIL B  
SCALE 4 : 1



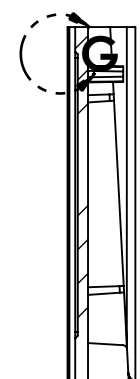
DETAIL J  
SCALE 4 : 1



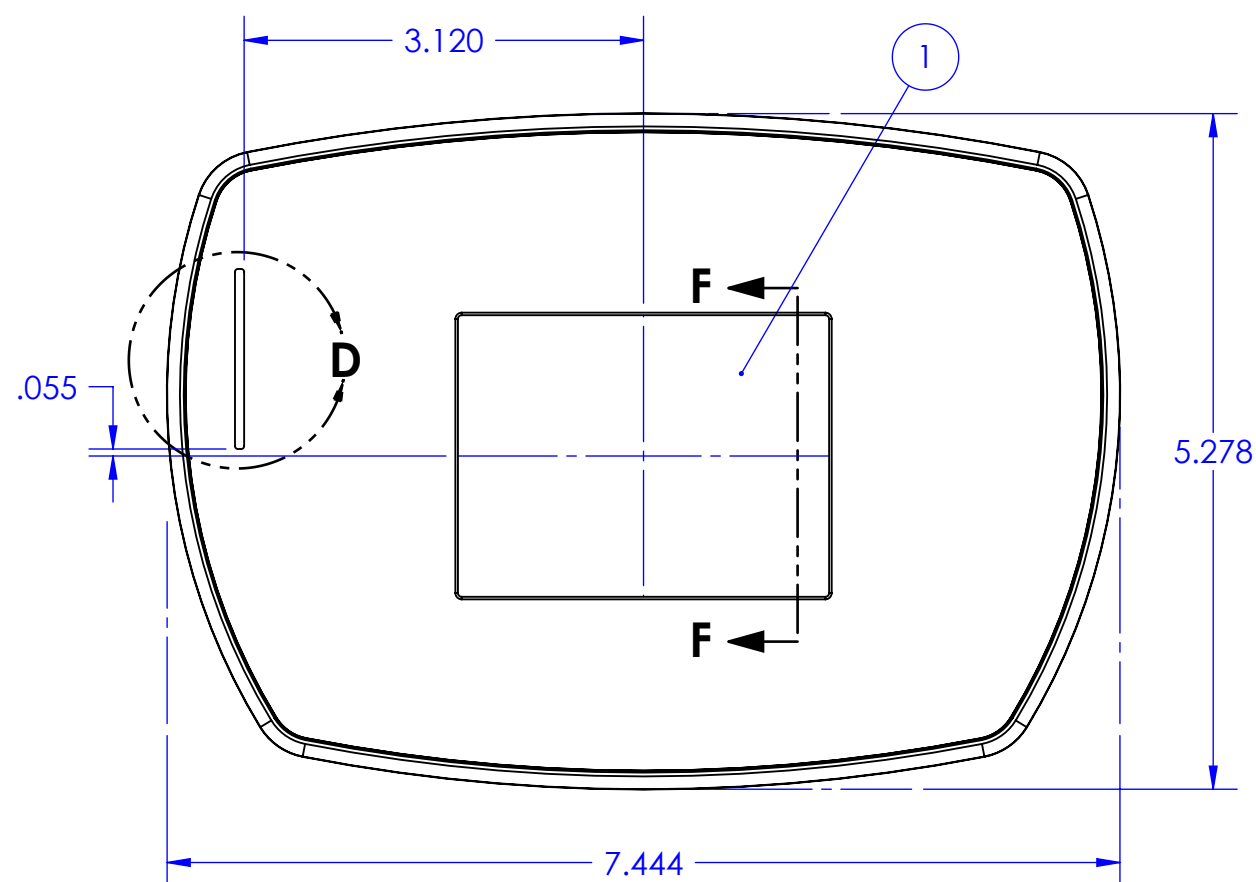
DETAIL D  
SCALE 2 : 1



DETAIL G  
SCALE 4 : 1



SECTION F-F



PROPRIETARY AND CONFIDENTIAL  
THE INFORMATION CONTAINED IN THIS DRAWING IS THE SOLE PROPERTY OF <INSERT COMPANY NAME HERE>. ANY REPRODUCTION IN PART OR AS A WHOLE WITHOUT THE WRITTEN PERMISSION OF <INSERT COMPANY NAME HERE> IS PROHIBITED.

UNLESS OTHERWISE SPECIFIED:		NAME	DATE	CAPSTAN AG SYSTEMS
DIMENSIONS ARE IN INCHES		AJH	3-10-15	
TOLERANCES:				
FRACTIONAL: ±1/64				
ANGULAR: MACH ±.01 BEND ±				
TWO PLACE DECIMAL ±.02				TITLE:
THREE PLACE DECIMAL ±.003				
INTERPRET GEOMETRIC TOLERANCING PER:		Q.A.		REV
MATERIAL		COMMENTS:		
Polycarbonate, Clear				120026-001, Rev 1, UIO Case - Front
FINISH				
NEXT ASSY	USED ON	SCALE: 2:3		WEIGHT:
APPLICATION		DO NOT SCALE DRAWING		SHEET 1 OF 1