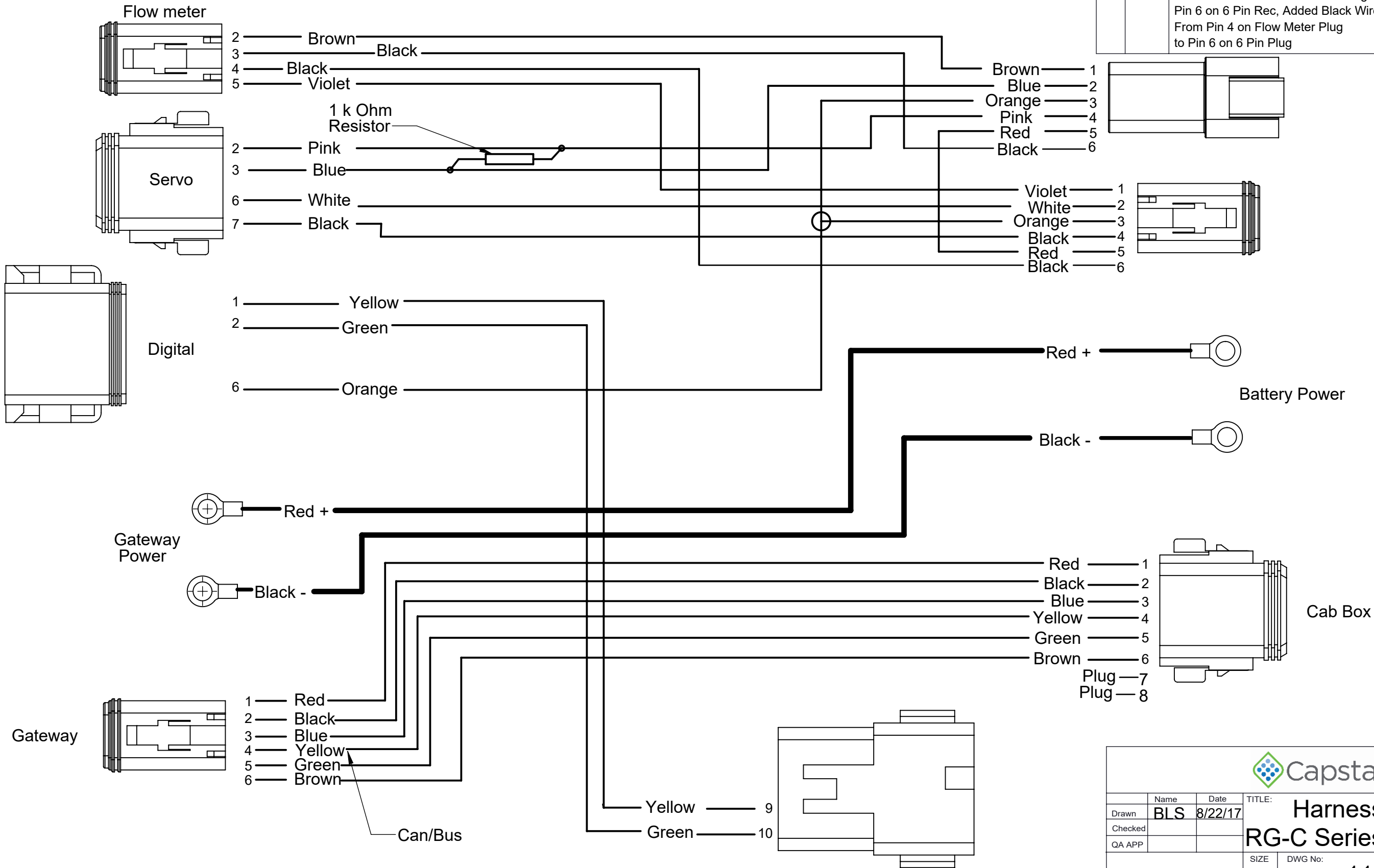


PROPRIETARY AND CONFIDENTIAL
THE INFORMATION CONTAINED IN THIS DRAWING IS THE SOLE PROPERTY OF
CAPSTAN AG INC. ANY REPRODUCTION IN PART OR AS A WHOLE
WITHOUT WRITTEN PERMISSION OF CAPSTAN AG INC IS PROHIBITED

Rev	ECR	Description	Date	By	App
D	2304	See Page 1	4/6/18	BLS	
E	2316	Removed Jumper Wire Between Pins 6 on 6 Pin Plug & Receptical. Added Black Wire from Pin 3 on Flow Meter Plug to Pin 6 on 6 Pin Rec, Added Black Wire From Pin 4 on Flow Meter Plug to Pin 6 on 6 Pin Plug	5/29/18	BLS	



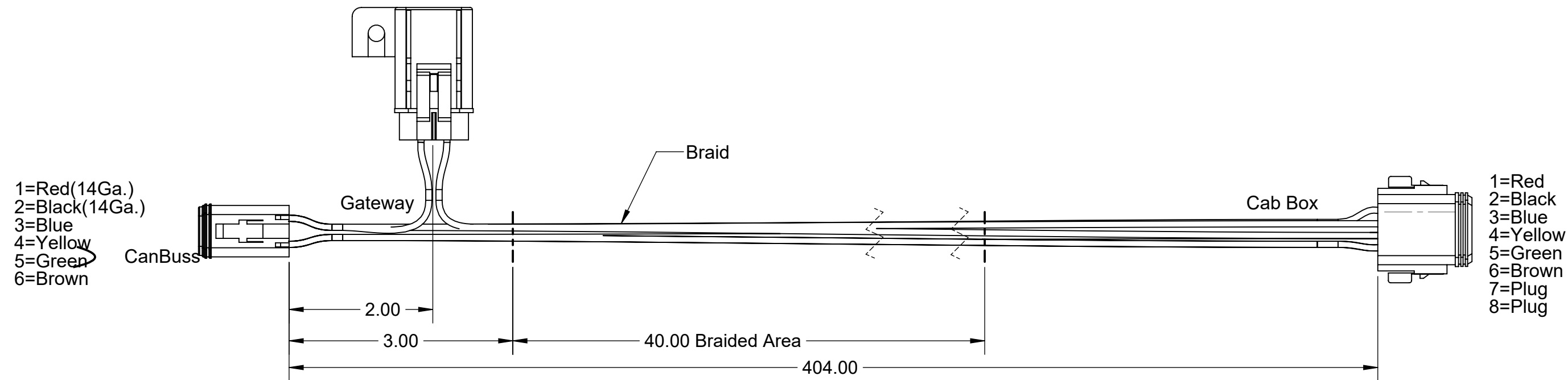
Harness, Alliance
RG-C Series, Direct Inject

SIZE: **B** DWG No: **118669-220** REV: **E**

SCALE: **None** SHEET 2 of 6

PROPRIETARY AND CONFIDENTIAL
THE INFORMATION CONTAINED IN THIS DRAWING IS THE SOLE PROPERTY OF
CAPSTAN AG INC. ANY REPRODUCTION IN PART OR AS A WHOLE
WITHOUT WRITTEN PERMISSION OF CAPSTAN AG INC IS PROHIBITED

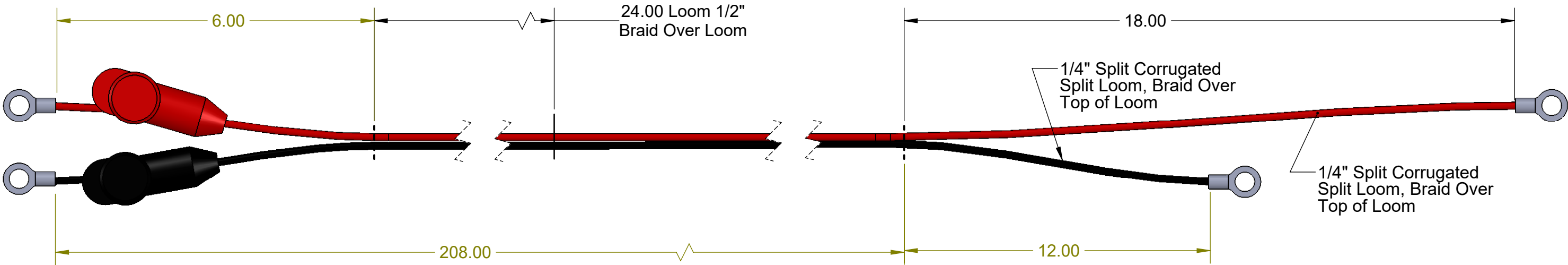
Rev	ECR	Description	Date	By	App
D	2304	Dim 404 was 388	4/6/18	BLS	
E	2316	See Page 1 & 2	5/29/18	BLS	



Drawn	Name	Date	TITLE: Harness, Alliance RG-C Series, Direct Inject		
Checked	BLS	8/22/17	SIZE	DWG No:	REV
QA APP			B	118669-220	E
			SCALE: None		SHEET 3 of 6

PROPRIETARY AND CONFIDENTIAL
THE INFORMATION CONTAINED IN THIS DRAWING IS THE SOLE PROPERTY OF
CAPSTAN AG INC. ANY REPRODUCTION IN PART OR AS A WHOLE
WITHOUT WRITTEN PERMISSION OF CAPSTAN AG INC IS PROHIBITED

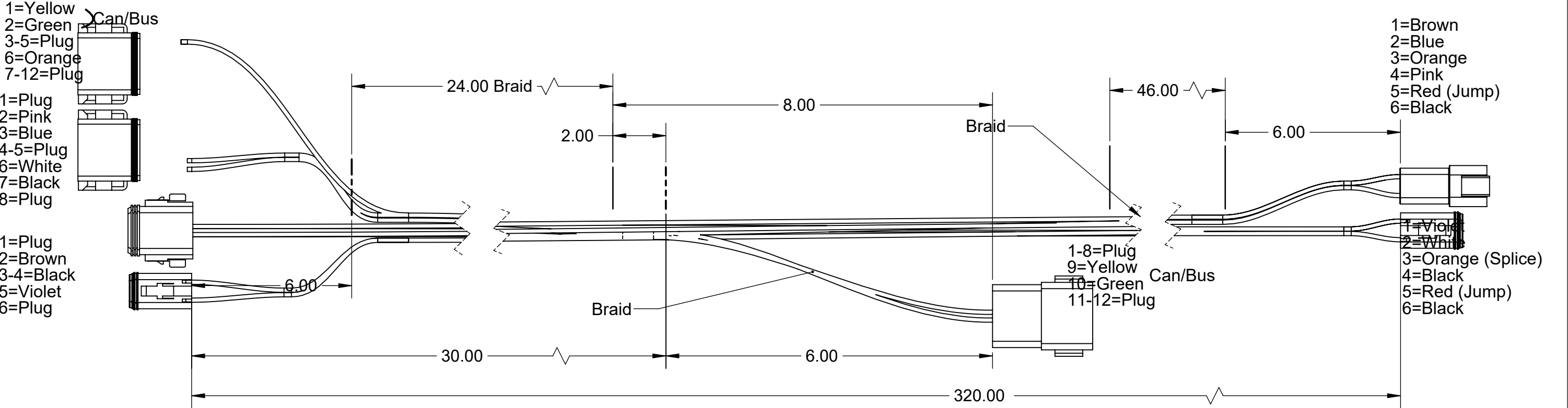
Rev	ECR	Description	Date	By	App
D	2304	Dim 208 was 192	4/6/18	BLS	
E	2316	See Page 1 & 2	5/29/18	BLS	



Drawn	Name BLS	Date 8/22/17	TITLE: Harness, Alliance RG-C Series, Direct Inject		
Checked			SIZE B	DWG No: 118669-220	REV E
QA APP			SCALE: None		SHEET 4 of 6

PROPRIETARY AND CONFIDENTIAL
THE INFORMATION CONTAINED IN THIS DRAWING IS THE SOLE PROPERTY OF
CAPSTAN AG INC. ANY REPRODUCTION IN PART OR AS A WHOLE
WITHOUT WRITTEN PERMISSION OF CAPSTAN AG INC IS PROHIBITED

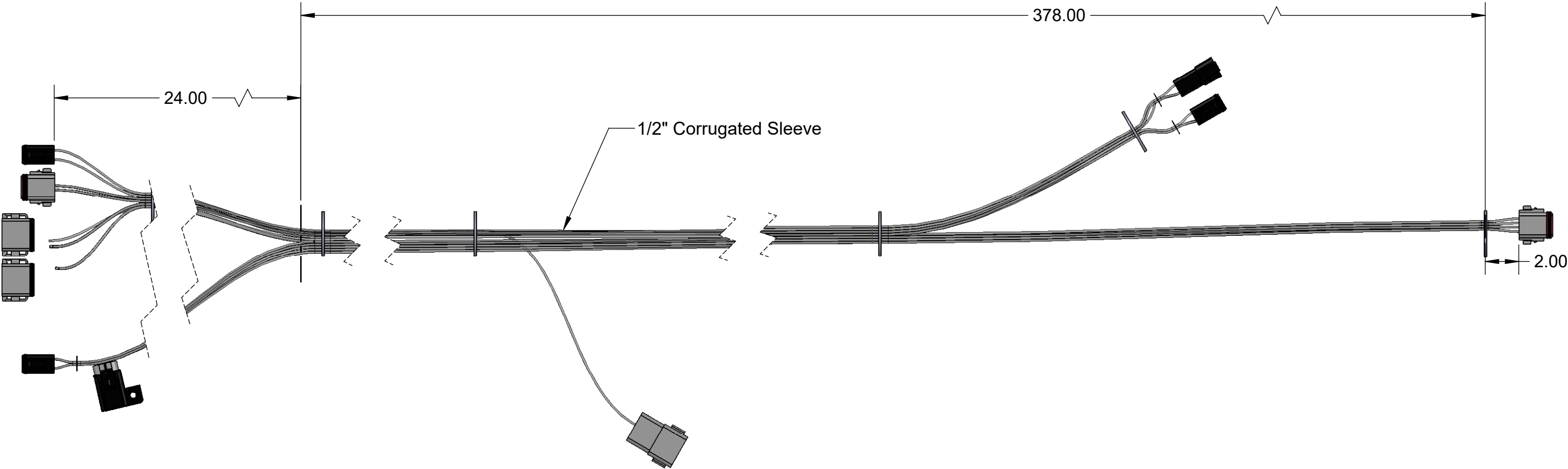
Rev	ECR	Description	Date	By	App
D	2304	Dim 320 was 304, Dim 46 was 30	4/6/18	BLS	
E	2316	See Page 1 & 2	5/29/18	BLS	



Drawn	Name	Date	TITLE: Harness, Alliance RG-C Series, Direct Inject		
Checked	BLS	8/22/17	SIZE	DWG No:	REV
QA APP			B	118669-220	E
			SCALE: None		SHEET 5 of 6

PROPRIETARY AND CONFIDENTIAL
THE INFORMATION CONTAINED IN THIS DRAWING IS THE SOLE PROPERTY OF
CAPSTAN AG INC. ANY REPRODUCTION IN PART OR AS A WHOLE
WITHOUT WRITTEN PERMISSION OF CAPSTAN AG INC IS PROHIBITED

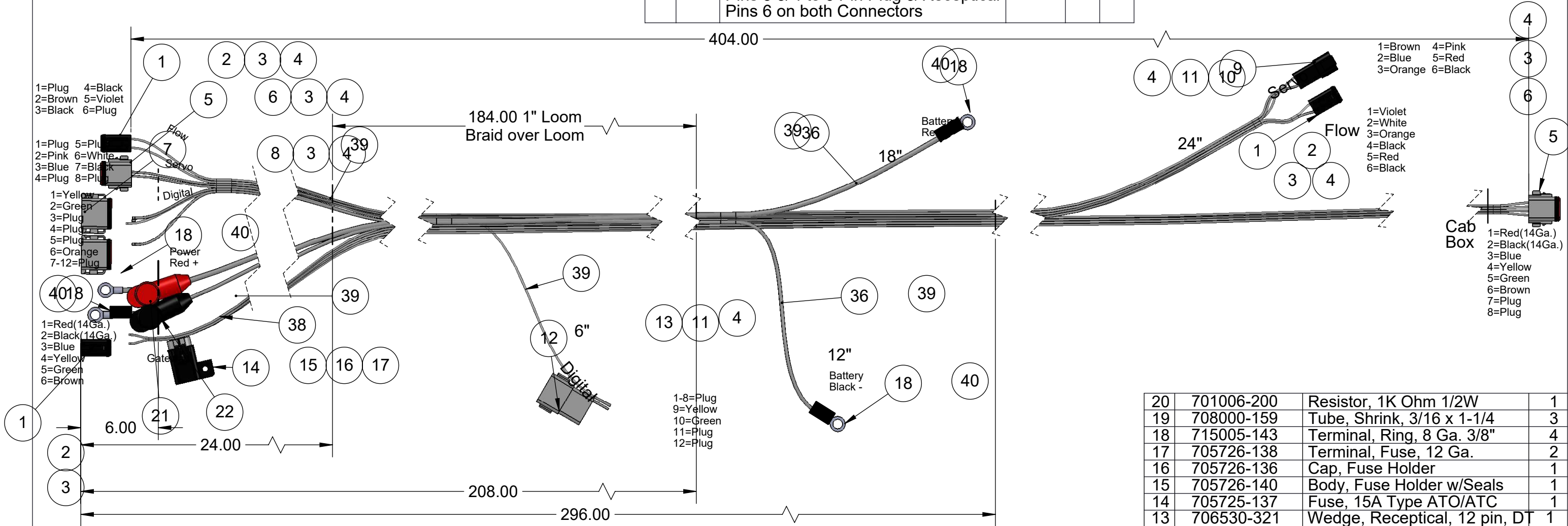
Rev	ECR	Description	Date	By	App
D	2304	Dim 378 was 362	4/6/18	BLS	
E	2316	See Page 1 & 2	5/29/18	BLS	



Drawn	Name	Date	TITLE:		
	BLS	8/22/17	Harness, Alliance		
Checked			RG-C Series, Direct Inject		
QA APP			SIZE	DWG No:	REV
			B	118669-220	E
SCALE: None			SHEET 6 of 6		

PROPRIETARY AND CONFIDENTIAL
THE INFORMATION CONTAINED IN THIS DRAWING IS THE SOLE PROPERTY OF
CAPSTAN AG INC. ANY REPRODUCTION IN PART OR AS A WHOLE
WITHOUT WRITTEN PERMISSION OF CAPSTAN AG INC IS PROHIBITED

Rev	ECR	Description	Date	By	App	Rev	ECR	Description	Date	By	App
E	2316	Removed Black Jumper Wire from the 2, 6 pin Conn(Pin 6), Ran 2 Black Wires From 6 Pin Flow Meter Plug Pins 3 & 4 to 6 Pin Plug & Receptical Pins 6 on both Connectors	5/29/18	BLS		D	2304	Dim 404 was 388, Dim 296 was 280, Dim 208 was 192, Dim 184 was 168, Changed Wire Lgths	4/6/18	BLS	



41	708000-177	Wire, 18 Ga, Black	862
40	708000-162	Tube, Shrink, 1/4 x 1.25	4
39	708000-015	Braiding	.60
38	715005-182	Loom, Corrugated Split, 1"	184
37	715005-180	Loom, Corrugated Split, 1/2"	436
36	715005-179	Loom, Corrugated Split, 1/4"	48
35	708000-142	Wire, 8 Ga, Red	226
34	708000-141	Wire, 8 Ga, Black	220
33	708000-175	Wire, 18 Ga, White	320
32	708000-186	Wire, 18 Ga, Orange	332
31	708000-176	Wire, 18 Ga, Red	18
30	708000-185	Wire, 18 Ga, Violet	320
29	708000-183	Wire, 18 Ga, Pink	320
28	708000-179	Wire, 18 Ga, Brown	708
27	708000-178	Wire, 18 Ga, Blue	708
26	708000-150	Wire, 14 Ga, Black	436
25	708000-157	Wire, 14 Ga, Red	436
24	708000-139	Cable, Can/Bus, 18 Ga. x 2	440
23	705726-118	Battery Boot, Black	1
22	705726-119	Battery Boot, Red	1
21	706530-334	Terminal, Socket, 14-16 Ga.	4
Item	Part Number	Description	Qty

20	701006-200	Resistor, 1K Ohm 1/2W	1
19	708000-159	Tube, Shrink, 3/16 x 1-1/4	3
18	715005-143	Terminal, Ring, 8 Ga. 3/8"	4
17	705726-138	Terminal, Fuse, 12 Ga.	2
16	705726-136	Cap, Fuse Holder	1
15	705726-140	Body, Fuse Holder w/Seals	1
14	705725-137	Fuse, 15A Type ATO/ATC	1
13	706530-321	Wedge, Receptical, 12 pin, DT	1
12	706530-341	Receptical, 12 pin, DT, Grey	1
11	706530-335	Terminal, Pin, 16-18Ga.	8
10	706530-315	Wedge, Receptical, 6 pin, DT	1
9	706530-305	Receptical, 6 pin, DT	1
8	706530-322	Wedge, Plug, 12 pin, DT	1
7	706530-312	Plug, 12 pin, DT	1
6	706530-318	Wedge, Plug, 8 pin, DT	2
5	706530-308	Plug, 8 pin, DT	2
4	706530-346	Plug, Cavity, 16-18Ga., White	27
3	706530-336	Terminal, Socket, 16-18Ga.	25
2	706530-316	Wedge, Plug, 6 pin, DT	3
1	706530-306	Plug, 6 pin, DT	3
Item	Part Number	Description	Qty



Drawn	Name	Date	TITLE:
Checked	BLS	8/22/17	Harness, Alliance
QA APP			RG-C Series, Direct Inject
SIZE	DWG No:	REV	
B	118669-220	E	
SCALE:	None	SHEET	1 of 6