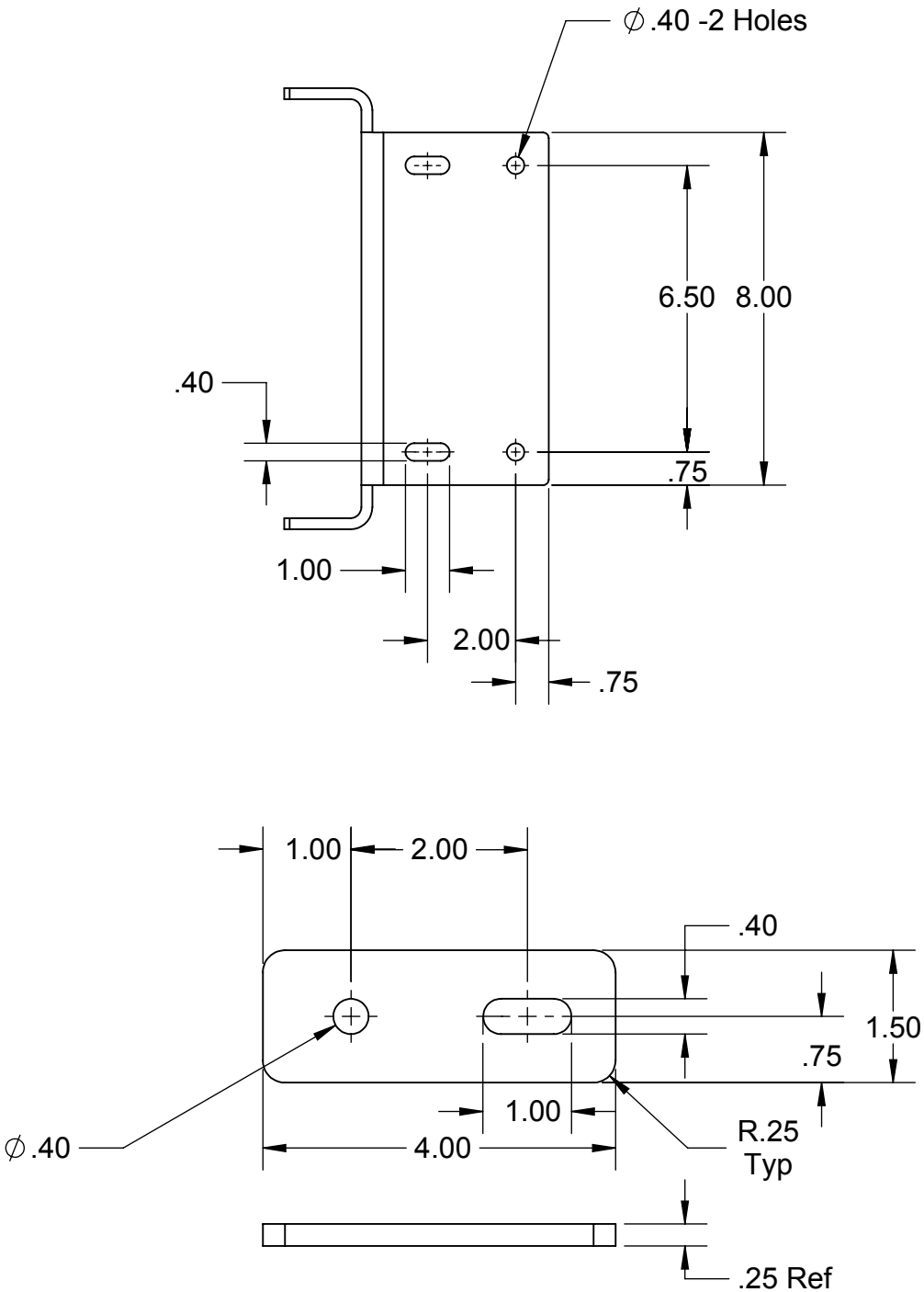


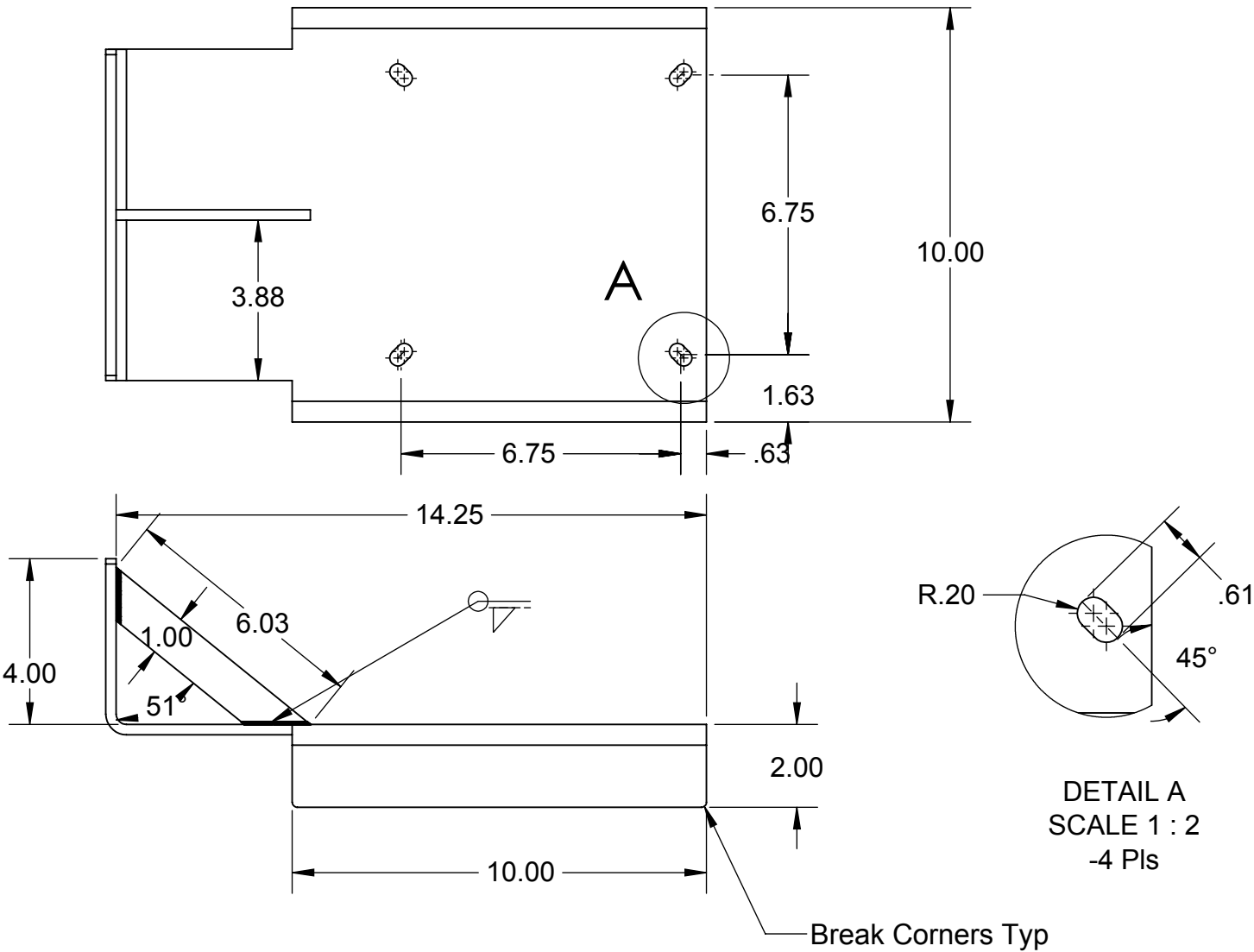
PROPRIETARY AND CONFIDENTIAL
THE INFORMATION CONTAINED IN THIS DRAWING IS THE SOLE PROPERTY OF
CAPSTAN AG INC. ANY REPRODUCTION IN PART OR AS A WHOLE
WITHOUT WRITTEN PERMISSION OF CAPSTAN AG INC IS PROHIBITED

Rev	ECR	Description	Date	By	App
A	2039	Production Release	8/30/16	BLS	
B	2080	Slots were holes, Revised Name	10/19/16	BLS	




Mount Strap
2 Pcs Required

Material: 1/4" Steel
Finish: Powder Coat Grey



DETAIL A
SCALE 1 : 2
-4 Pls

Break Corners Typ

UNLESS OTHERWISE SPECIFIED:		 CAPSTAN Ag Systems, Inc.		CAPSTAN AG SYSTEMS, INC. 4225 S.W. Kirklawn Ave., Topeka, KS 66609	
DIMENSIONS ARE IN INCHES		APPLICATION SYSTEMS FOR PROFESSIONALS		TITLE: Mount, Gateway, Power Hub	
TOLERANCES:		Name Date		RoGator, Large Frame Mast	
FRACTIONAL ±		Drawn BLS 8/30/16		4" Slide Tube	
ANGULAR: MACH ± BEND ±		Checked		SIZE B	
TWO PLACE DECIMAL ±		QA APP		DWG No: 118640-117	
THREE PLACE DECIMAL ±				REV B	
INTERPRET GEOMETRIC TOLERANCING PER:				SCALE: None	
MATERIAL				SHEET 1 of 1	
FINISH					
DO NOT SCALE DRAWING					