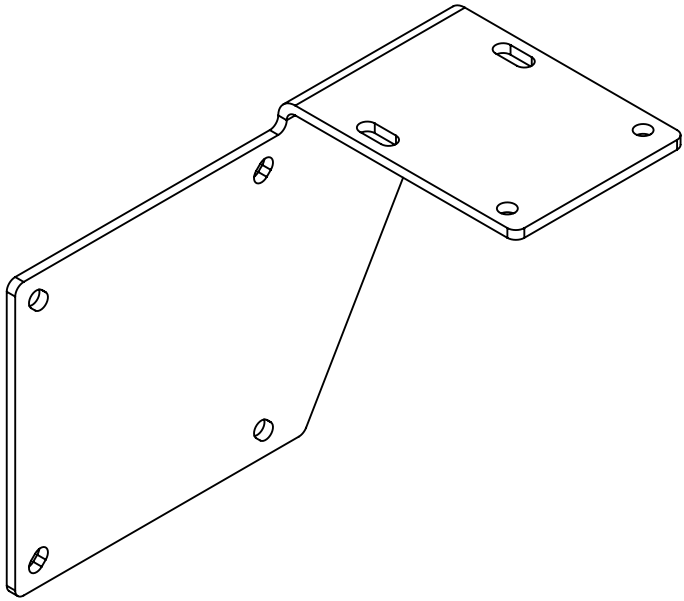
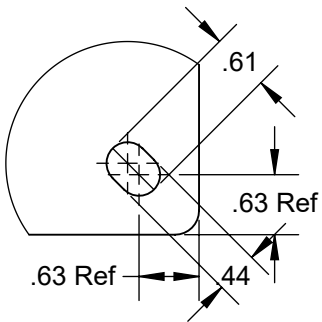
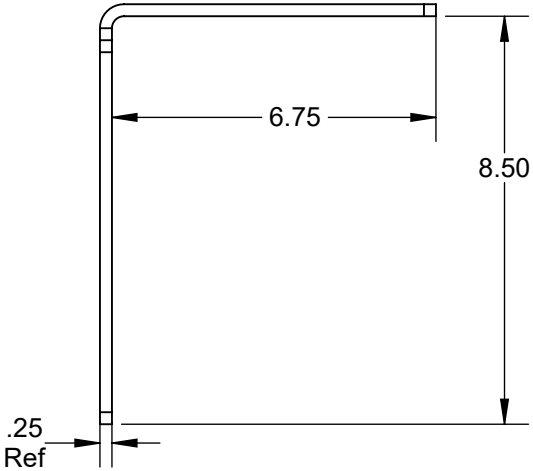
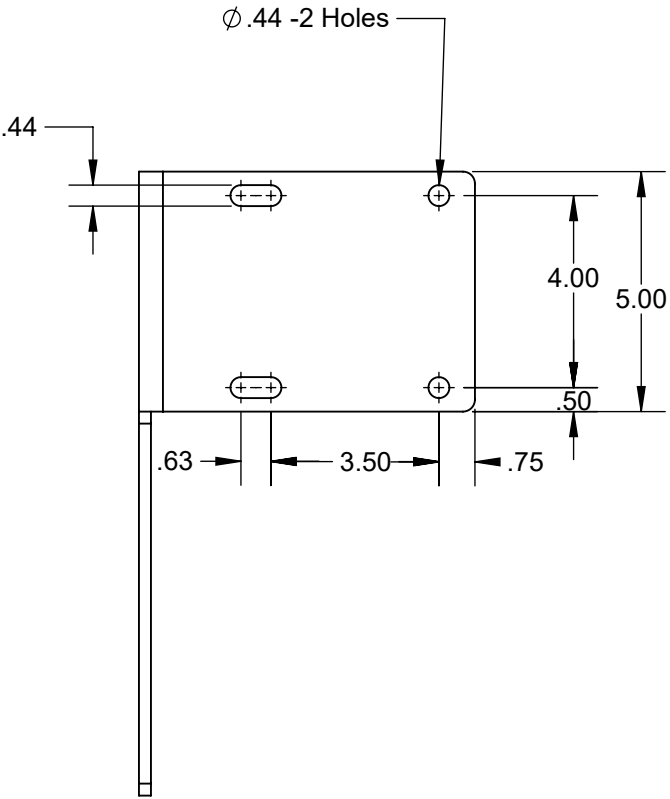
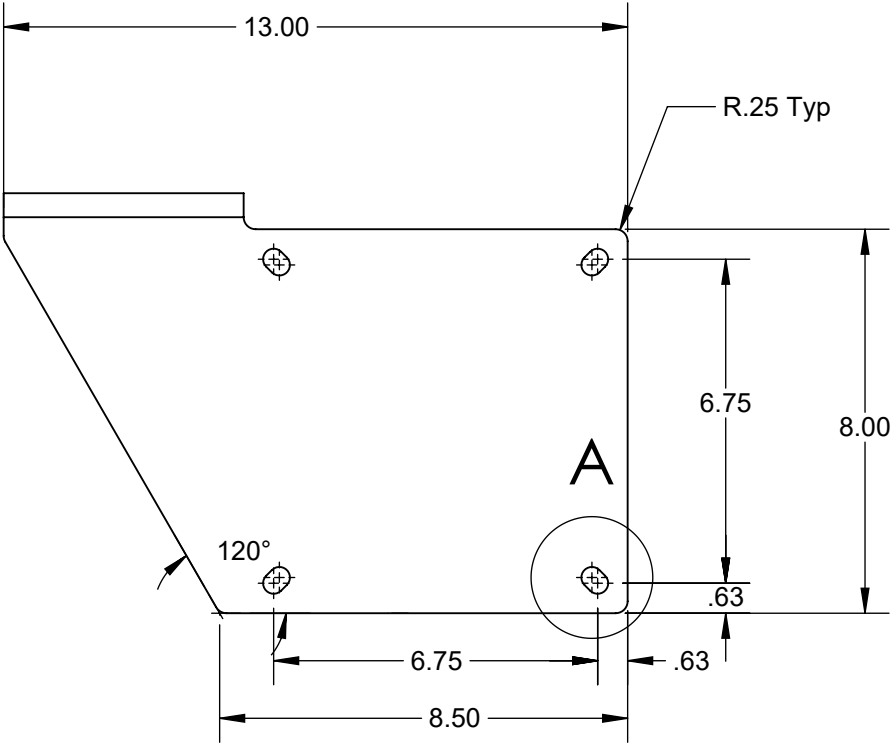



PROPRIETARY AND CONFIDENTIAL
THE INFORMATION CONTAINED IN THIS DRAWING IS THE SOLE PROPERTY OF
CAPSTAN AG INC. ANY REPRODUCTION IN PART OR AS A WHOLE
WITHOUT WRITTEN PERMISSION OF CAPSTAN AG INC IS PROHIBITED

Rev	ECR	Description	Date	By	App
A	2036	Production Release	6/16/16	BLS	



Notes: Material, 1/4" C.F. Steel.
Finish: Charcol Grey, Powder Coat.

DETAIL A
SCALE 1 : 2
Typ -4 pls

UNLESS OTHERWISE SPECIFIED:		 CAPSTAN AG SYSTEMS, INC. Ag Systems, Inc. 4225 S.W. Kirklawn Ave., Topeka, KS 66609	
DIMENSIONS ARE IN INCHES		TITLE:	
TOLERANCES:		Mounting Plate, Gateway, Power Hub	
FRACTIONAL ±		RoGator, RG Series, 90Ft, 100Ft Booms	
ANGULAR: MACH ± BEND ±		Drawn	Name Date
TWO PLACE DECIMAL ±		Checked	
THREE PLACE DECIMAL ±		QA APP	
INTERPRET GEOMETRIC TOLERANCING PER:		SIZE DWG No:	
MATERIAL		B 118640-113	
FINISH		REV	
DO NOT SCALE DRAWING		A	
		SCALE: None	
		SHEET 1 of 1	