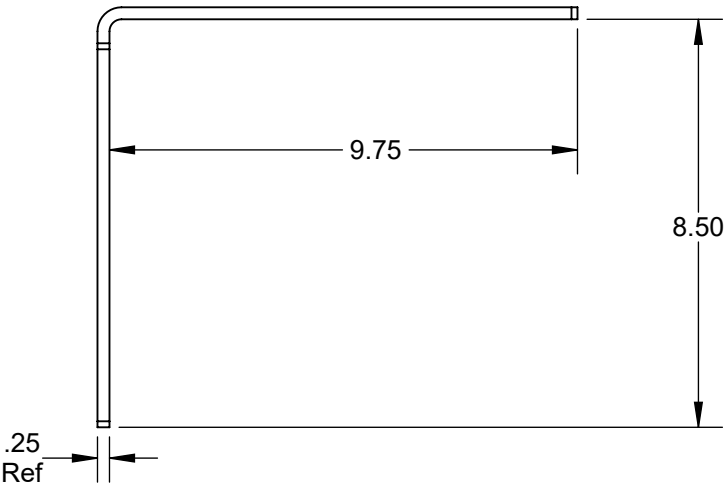
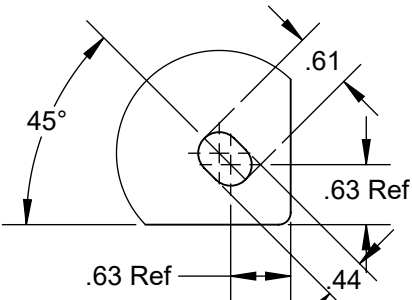
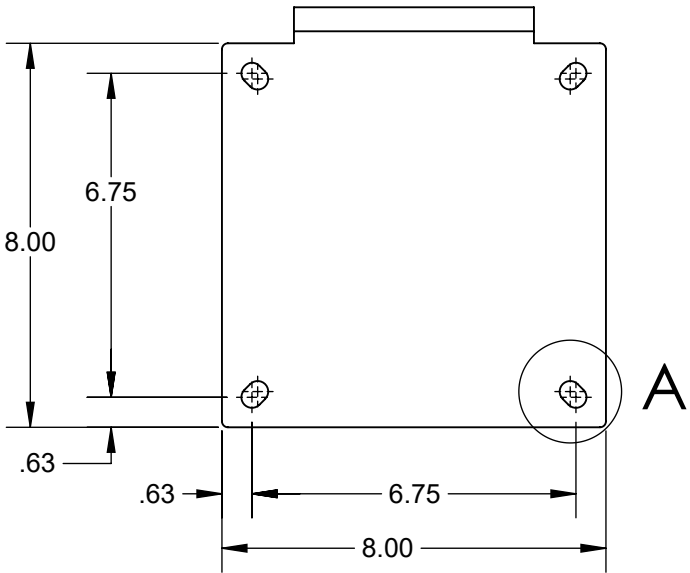
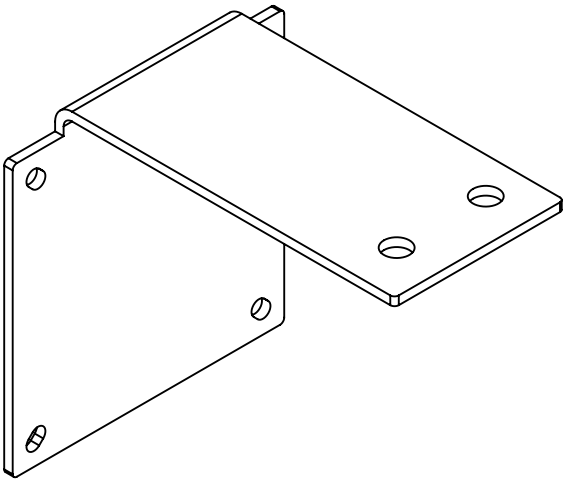
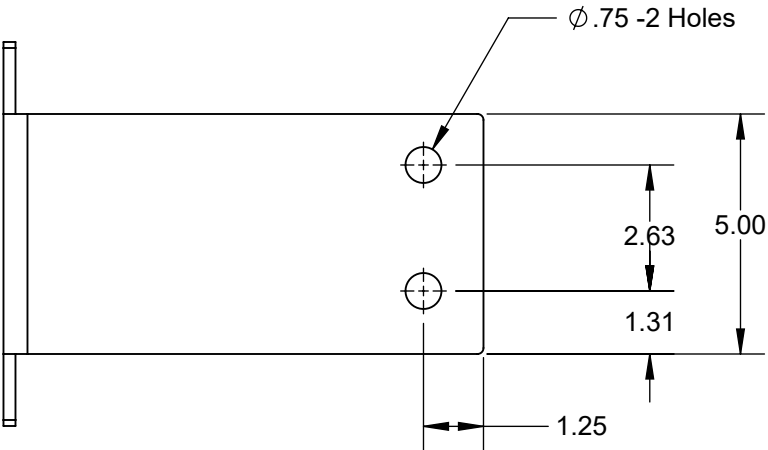



**PROPRIETARY AND CONFIDENTIAL**  
THE INFORMATION CONTAINED IN THIS DRAWING IS THE SOLE PROPERTY OF  
CAPSTAN AG INC. ANY REPRODUCTION IN PART OR AS A WHOLE  
WITHOUT WRITTEN PERMISSION OF CAPSTAN AG INC IS PROHIBITED

Rev	ECR	Description	Date	By	App
A	1043	Production Release	3/19/15	BLS	



Notes: Material, 1/4" C.F. Steel.  
Finish: Charcol Grey, Powder Coat.

DETAIL A  
SCALE 1 : 2  
Typ -4 Pls

UNLESS OTHERWISE SPECIFIED:		 <b>CAPSTAN</b> Ag Systems, Inc.		<b>CAPSTAN AG SYSTEMS, INC.</b> <b>4225 S.W. Kirklawn Ave., Topeka, KS 66609</b>													
DIMENSIONS ARE IN INCHES		<table><tr><td></td><td>Name</td><td>Date</td></tr><tr><td>Drawn</td><td>BLS</td><td>3/19/15</td></tr><tr><td>Checked</td><td></td><td></td></tr><tr><td>QA APP</td><td></td><td></td></tr></table>			Name	Date	Drawn	BLS	3/19/15	Checked			QA APP			TITLE:  Mounting Plate, Gateway, Power Hub JD, R Series	
	Name			Date													
Drawn	BLS			3/19/15													
Checked																	
QA APP																	
TOLERANCES:																	
FRACTIONAL ±																	
ANGULAR: MACH ±    BEND ±																	
TWO PLACE DECIMAL ±																	
THREE PLACE DECIMAL ±																	
INTERPRET GEOMETRIC TOLERANCING PER:																	
MATERIAL	1/4 HRS		SIZE	DWG No:	REV												
FINISH	Powder Coat: Grey DO NOT SCALE DRAWING		B	118640-110	A												
			SCALE: None	SHEET 1 of 1													