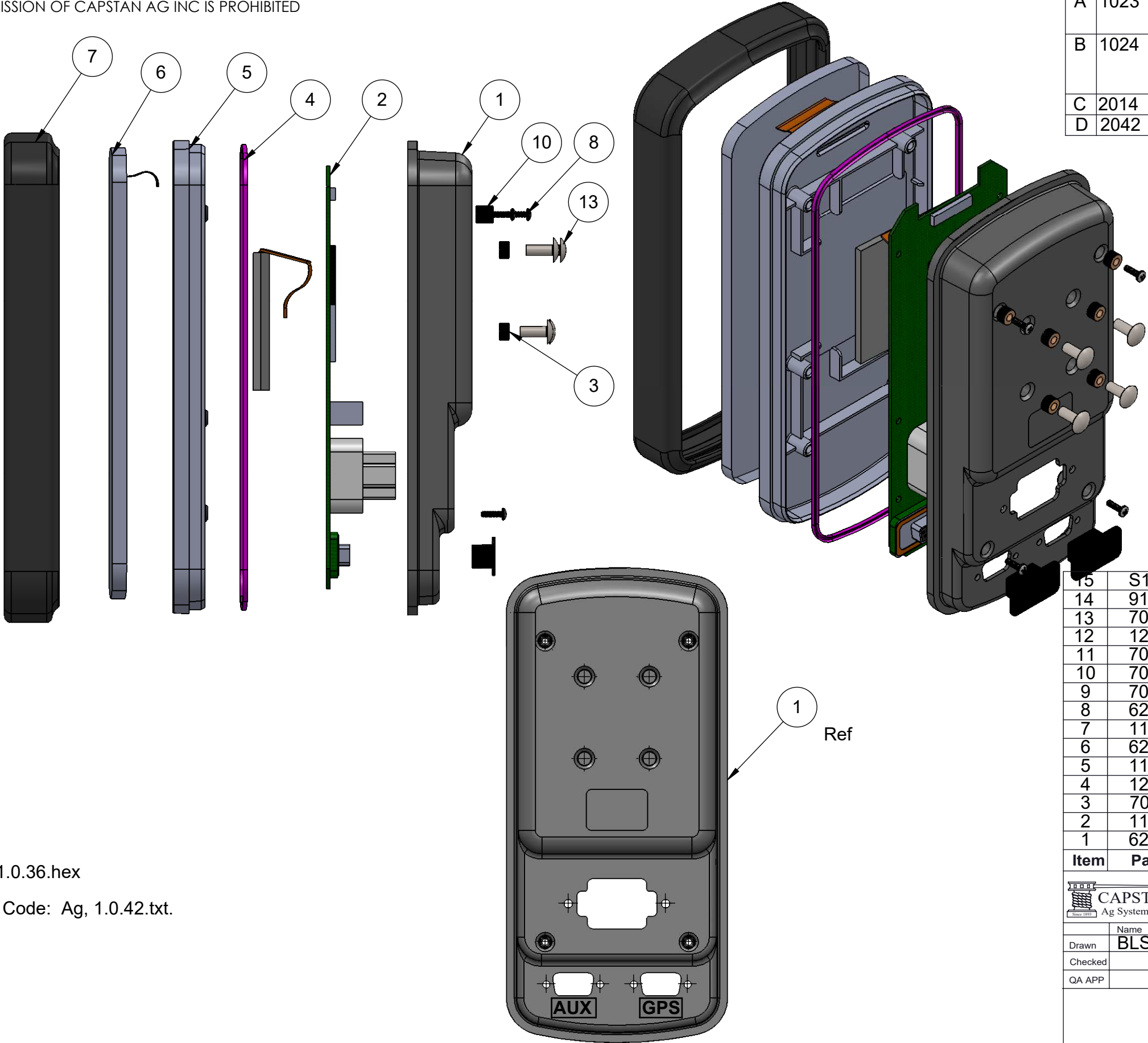


PROPRIETARY AND CONFIDENTIAL
 THE INFORMATION CONTAINED IN THIS DRAWING IS THE SOLE PROPERTY OF
 CAPSTAN AG INC. ANY REPRODUCTION IN PART OR AS A WHOLE
 WITHOUT WRITTEN PERMISSION OF CAPSTAN AG INC IS PROHIBITED

REV	ECR	DESCRIPTION	DATE	BY
1		Preliminary Release	9/25/13	BLS
A	1023	Note 2, App. Code 1.0.42.txt was 1.0.29.txt	11/20/14	BLS
B	1024	Added item 14, application code 918801-042 to bill of material, item 2, 118551-105 was 118551-103	11/25/14	BLS
C	2014	Item 4, 120020-002 was 120020-001	3/31/16	BLS
D	2042	Note 1, Boot Code, 1.0.36 was 1.0.35	7/25/16	BLS



15	S1000-210	Foam Set, SSRS	1
14	918801-042	Application Code Ag 1.0.42.txt	
13	709031-803	Screw, 10-24 x 1/2 PH Phillips	4
12	120140-009	Screwlock 4-40 M/F Hex	4
11	709031-203	Screw, 6-19 x 5/8 Plastite	2
10	708992-202	Insert, Threaded, 4-40	5
9	708992-102	Screw, 4-40 Pan Hd	5
8	626100-001	Outer Band, Cab Box	1
7	118300-001	Key Pad, Cab Box	1
6	626100-002	Front, Cab Box	1
5	118551-106	O-Ring Gasket, Cab Box	23"
4	120020-002	Optrex, 3.5 in LCD, High Temp	1
3	708992-203	Insert, Threaded, 10-24	4
2	118551-105	Circuit Board, Cab Box	1
1	626100-003	Back, Cab Box	1
Item	Part Number	Description	Qty

		CAPSTAN AG SYSTEMS, INC. 101 N. KANSAS AVE., TOPEKA, KS 66603	
Drawn	BLS	Date	9/25/13
Checked			
QA APP			
TITLE: Cab Box Assy SharpShooter RS		SIZE	B
		DWG No:	118550-002
		REV	D
SCALE: None		SHEET 1 of 1	

- Notes:
1. Boot code 1.0.36.hex
 2. Application Code: Ag, 1.0.42.txt.