

1.0 - INSTALLATION INSTRUCTIONS - 118155-002 Rev. B

Hub Mounting on a John Deere Sprayer

- Models - John Deere R4023/R4630

KIT NUMBER- 118703-007		
PART NUMBER	DESCRIPTION	QTY
713501-405	3/8-16 x 4 Flange Bolt	4
713501-905	3/8-16 Hex Locknut	8
713600-003	3/8 Flat Washer	8
713501-404	3/8-16 x 1-1/2 Flange Bolt	4
118640-112	Mount Bar	2
118640-111	Gateway Power Hub Mount	1

For safety information see the system and machine manuals.

- [Figure 1]** - Identify the mounting location (1) on the top right side of the main boom frame.

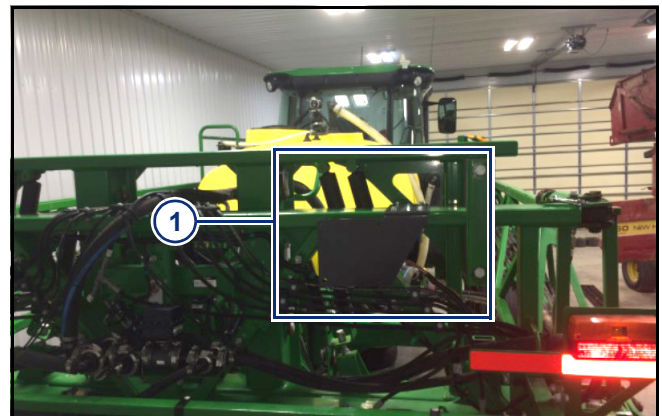


Figure 1

2. **[Figure 2]** - Measure the mounting plate offset to be six inches to the left of the center of the bracket mount area.

IMPORTANT: This offset is to avoid the boom frame gussets directly behind the bracket.

3. Install the mounting plate (1) to the boom with the supplied hardware.



Figure 2

4. Attach the hub to the mounting plate as shown with supplied hardware:

[Figure 3] - SharpShooter® with Rate Sync® Power Hub



Figure 3

[Figure 4] - PinPoint® Gateway Hub



Figure 4