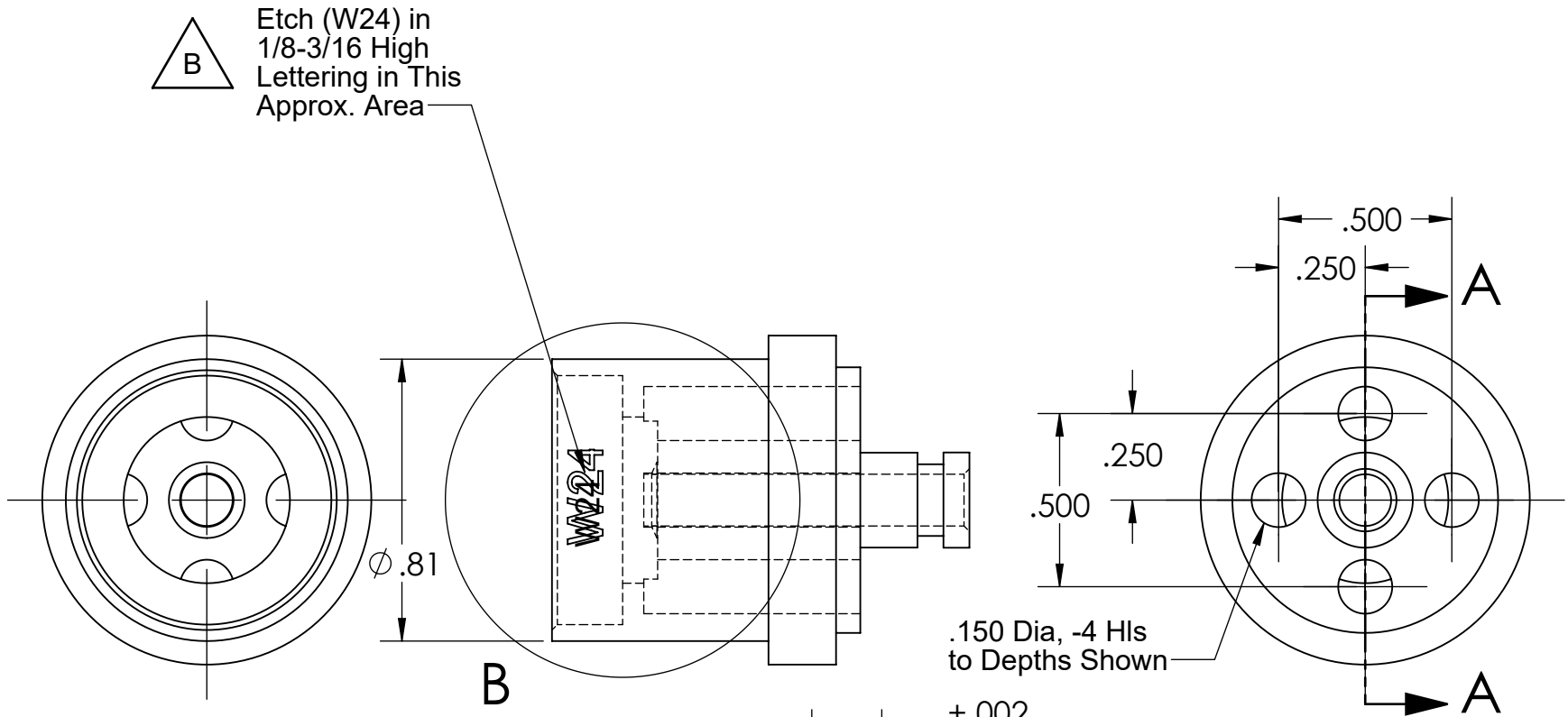



PROPRIETARY AND CONFIDENTIAL
THE INFORMATION CONTAINED IN THIS DRAWING IS THE SOLE PROPERTY OF
CAPSTAN AG INC. ANY REPRODUCTION IN PART OR AS A WHOLE
WITHOUT WRITTEN PERMISSION OF CAPSTAN AG INC IS PROHIBITED

REV	ECR	DESCRIPTION	DATE	BY
A	1085	Production Release	12/15/15	BLS
B	2044	.150 Dia was .156, Added .079 Dim, .101 Dim was .092, Stamping W24 was W5.32	8/1/16	BLS



Material: 303 Stainless Steel.

UNLESS OTHERWISE SPECIFIED:				CAPSTAN AG SYSTEMS, INC.		
DIMENSIONS ARE IN INCHES		CAPSTAN®		4225 S.W. Kirklawn Ave., Topeka, KS 66609		
TOLERANCES:		Ag Systems, Inc.				
FRACTIONAL ±		Name	Date	TITLE: Nozzle, Valve Body, Wilger, W24		
ANGULAR: MACH ± BEND ±		Drawn	BLS 12/15/15			
TWO PLACE DECIMAL ±		Checked				
THREE PLACE DECIMAL ±		QA APP				
INTERPRET GEOMETRIC						
TOLERANCING PER:						
MATERIAL				SIZE	DWG No:	REV
FINISH				B	116188-112	B
DO NOT SCALE DRAWING		SCALE: None				SHEET 1 of 1