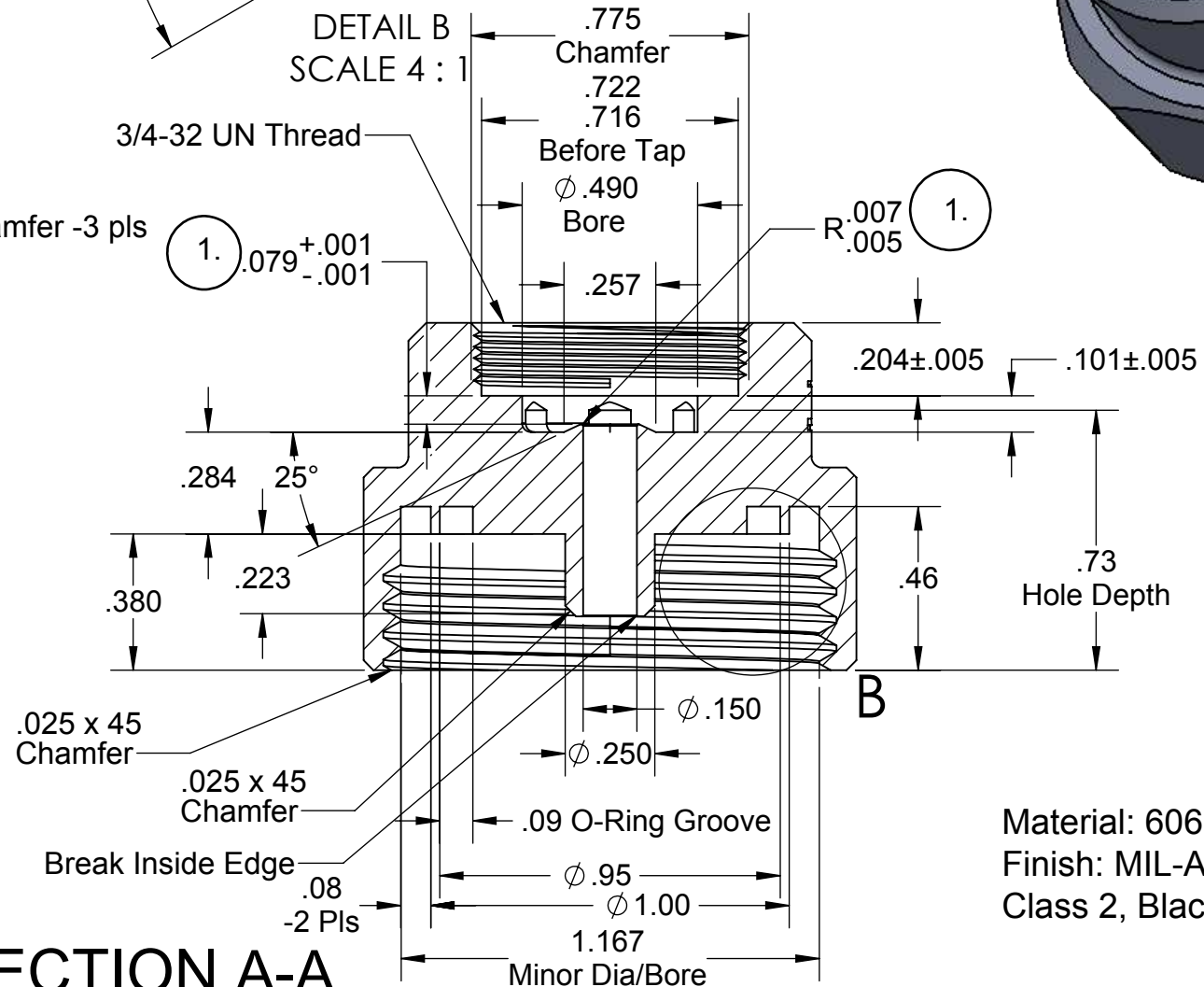
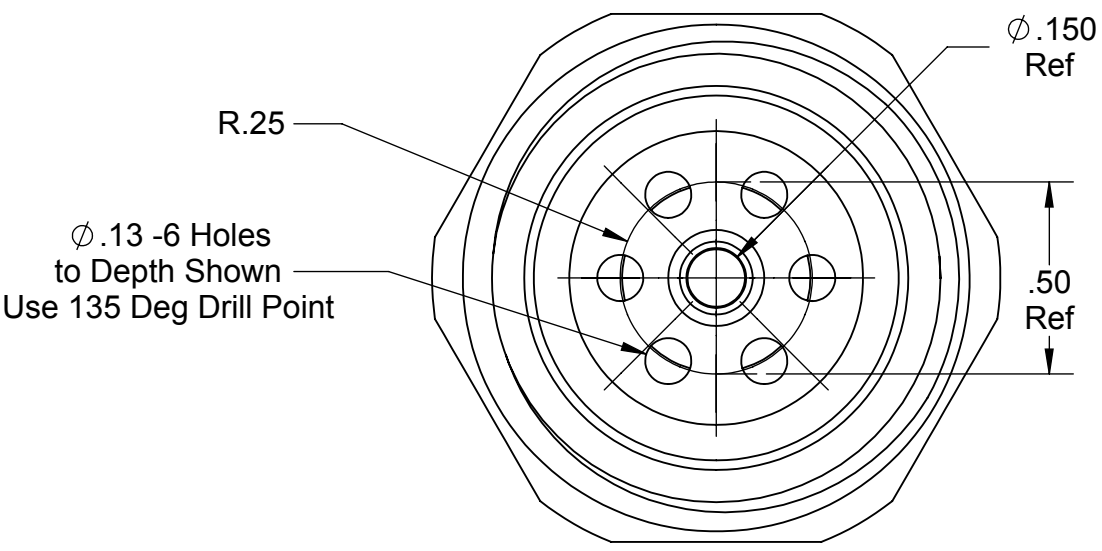
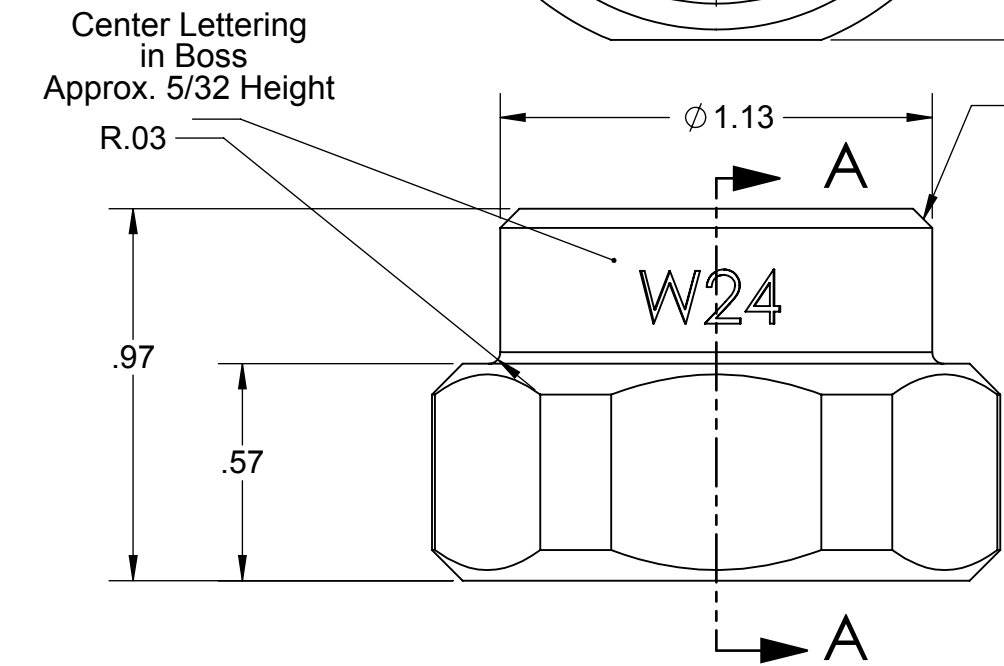
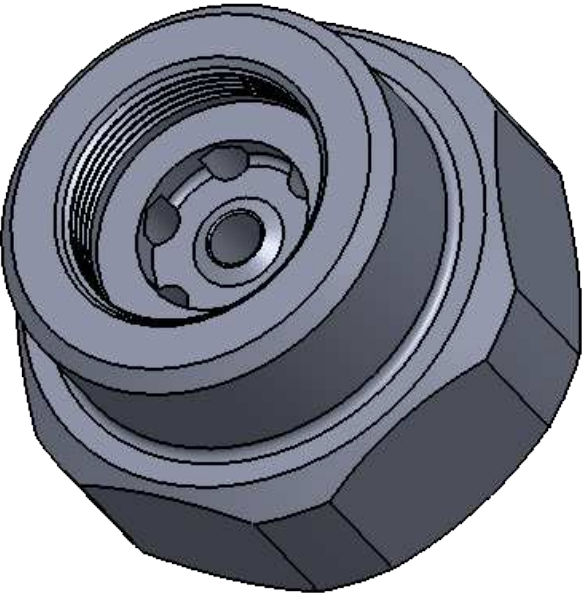
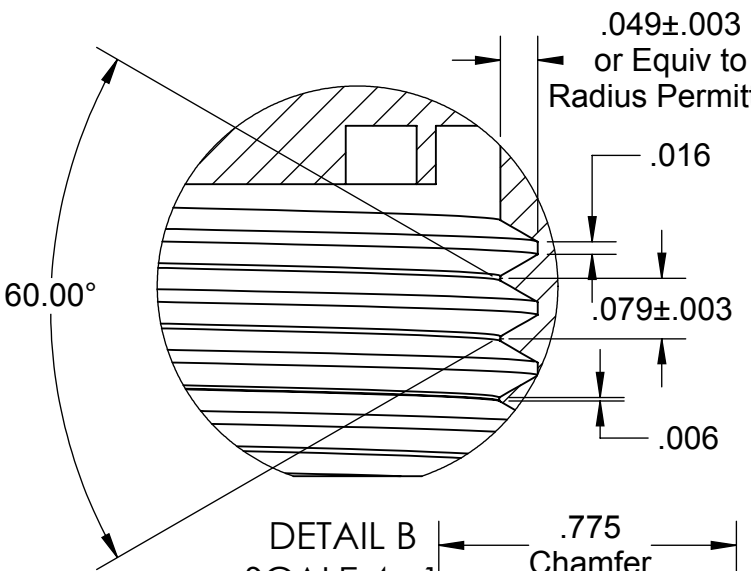
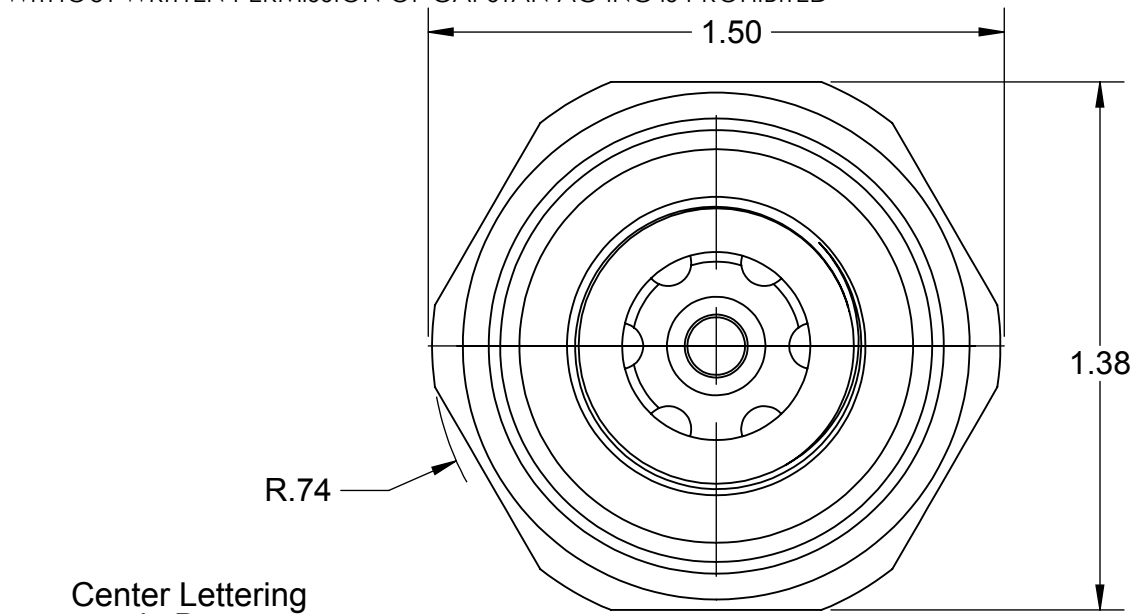


PROPRIETARY AND CONFIDENTIAL
THE INFORMATION CONTAINED IN THIS DRAWING IS THE SOLE PROPERTY OF
CAPSTAN AG INC. ANY REPRODUCTION IN PART OR AS A WHOLE
WITHOUT WRITTEN PERMISSION OF CAPSTAN AG INC IS PROHIBITED

Rev	ECR	Description	Date	By	App
A	2227	Production Release	10/4/17	SEM	
B	2273	Added Note 2	1/31/18	BLS	



Material: 6061-t6 Aluminum
Finish: MIL-A-8625 Type III,
Class 2, Black, 2.0 Mil Thickness

SECTION A-A

- Notes:
1. This is a Critical Dimension.
 2. Pitch Diameter: 1.214
(For Reference Only, Refer to Detail "B"
For Final Thread Dimensions.)

UNLESS OTHERWISE SPECIFIED: DIMENSIONS ARE IN INCHES TOLERANCES: FRACTIONAL ± ANGULAR: MACH ± BEND ± TWO PLACE DECIMAL ± .010 THREE PLACE DECIMAL ± .003 INTERPRET GEOMETRIC TOLERANCING PER: MATERIAL FINISH DO NOT SCALE DRAWING					
CapstanAG			TITLE: FlyBody, Wilger, W24		
Drawn	BLS	Date	10/4/17	SIZE	B
Checked				DWG No:	116188-002
QA APP				REV	B
SCALE: None				SHEET 1 of 1	