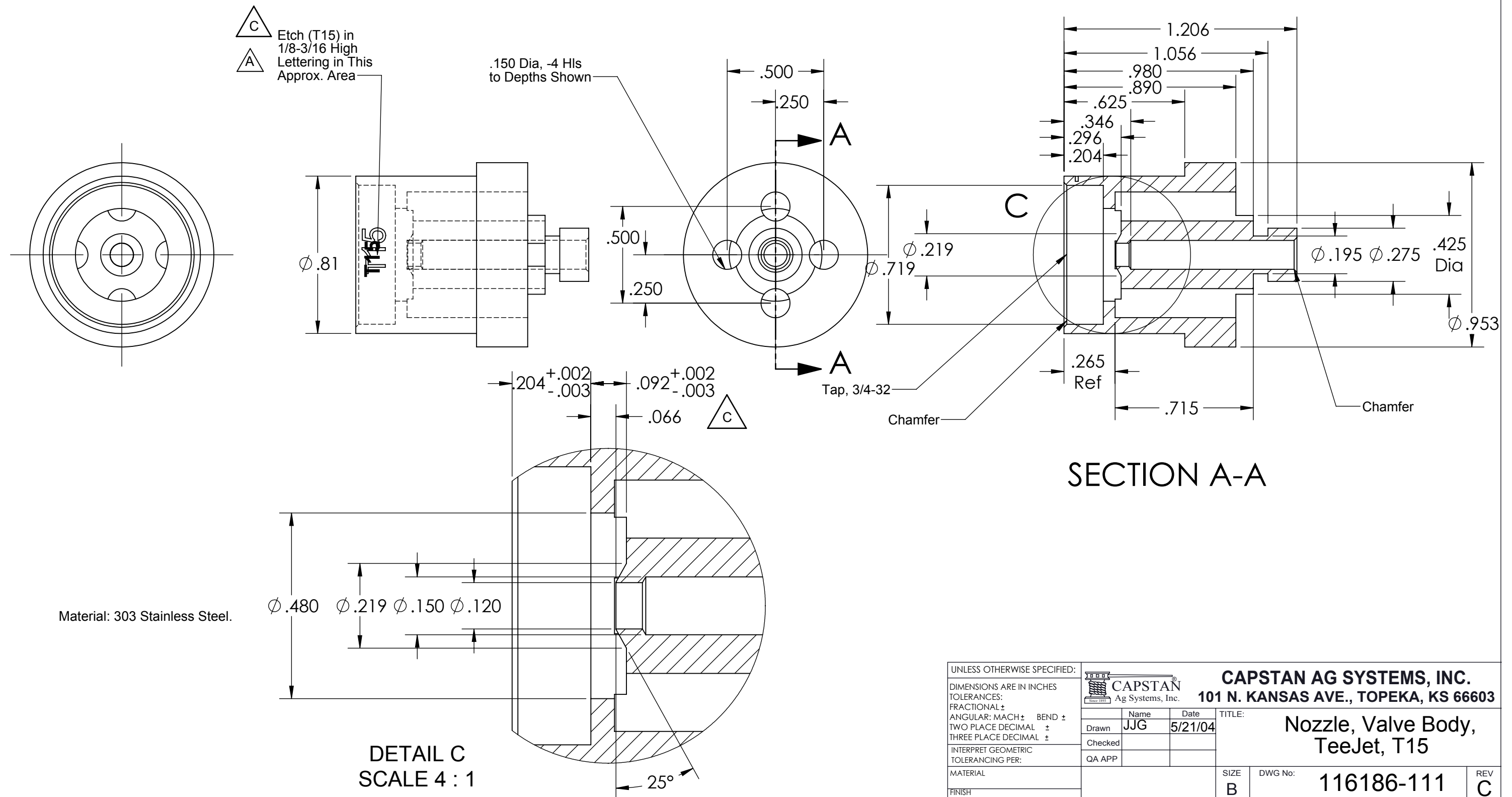



THE INFORMATION CONTAINED IN THIS DRAWING IS THE SOLE PROPERTY OF
CAPSTAN AG INC. ANY REPRODUCTION IN PART OR AS A WHOLE
WITHOUT WRITTEN PERMISSION OF CAPSTAN AG INC IS PROHIBITED

REV	ECR	DESCRIPTION	DATE	BY
A		Redrawn in SolidWorks, Added Etching	4/26/13	BLS
B	1049	Added View C, and dims, Added Tap callout	4/28/15	BLS
C	2044	Added .066 Dim, Stamping T15 was T	8/1/16	BLS



Material: 303 Stainless Steel.

DETAIL C
SCALE 4 : 1

UNLESS OTHERWISE SPECIFIED:		<div>CAPSTAN Ag Systems, Inc.</div>		CAPSTAN AG SYSTEMS, INC. 101 N. KANSAS AVE., TOPEKA, KS 66603													
DIMENSIONS ARE IN INCHES TOLERANCES: FRACTIONAL ± ANGULAR: MACH ± BEND ± TWO PLACE DECIMAL ± THREE PLACE DECIMAL ±		<table><tr><td></td><td>Name</td><td>Date</td></tr><tr><td>Drawn</td><td>JJG</td><td>5/21/04</td></tr><tr><td>Checked</td><td></td><td></td></tr><tr><td>QA APP</td><td></td><td></td></tr></table>		Name	Date	Drawn	JJG	5/21/04	Checked			QA APP			TITLE: <div>Nozzle, Valve Body, TeeJet, T15</div>		
	Name	Date															
Drawn	JJG	5/21/04															
Checked																	
QA APP																	
MATERIAL				SIZE B	DWG No: <div>116186-111</div>	REV C											
FINISH				SCALE: None		SHEET 1 of 1											
DO NOT SCALE DRAWING																	