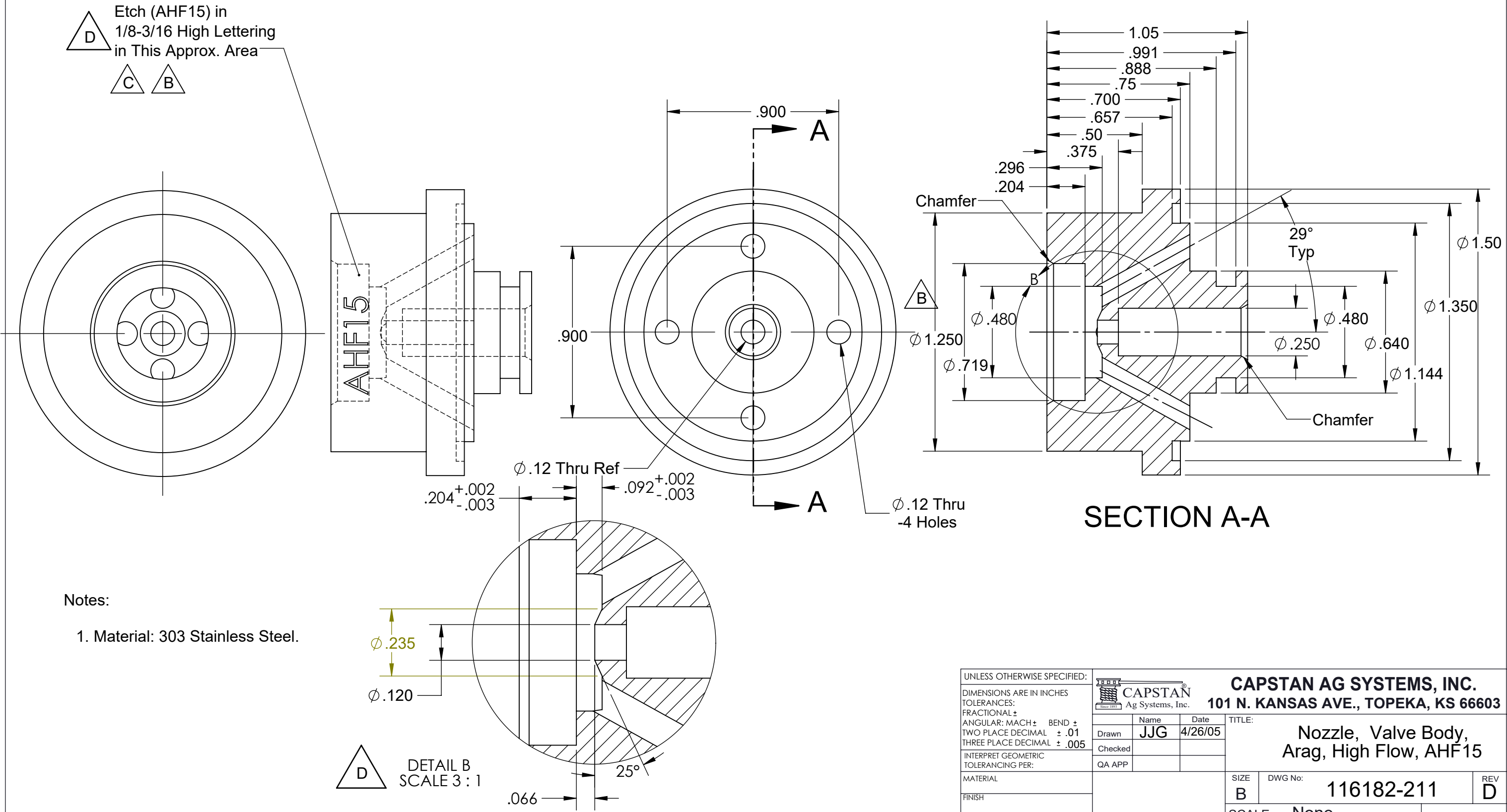


**PROPRIETARY AND CONFIDENTIAL**  
 THE INFORMATION CONTAINED IN THIS DRAWING IS THE SOLE PROPERTY OF  
 CAPSTAN AG INC. ANY REPRODUCTION IN PART OR AS A WHOLE  
 WITHOUT WRITTEN PERMISSION OF CAPSTAN AG INC IS PROHIBITED


REV	ECR	DESCRIPTION	DATE	BY
B		Redrawn in SolidWorks, 1.250 Dia was 1.350 Dia, Added Etch	11/7/12	BLS
C		Rotated Lettering	5/1/13	BLS
D	2044	Added Dims to Veiw Detail B, Revised Stamping, AHF15 was HF.120	8/1/16	BLS



SECTION A-A

Notes:

1. Material: 303 Stainless Steel.

UNLESS OTHERWISE SPECIFIED:				<b>CAPSTAN AG SYSTEMS, INC.</b> <b>101 N. KANSAS AVE., TOPEKA, KS 66603</b>	
DIMENSIONS ARE IN INCHES		<b>TITLE:</b>  <b>Nozzle, Valve Body, Arag, High Flow, AHF15</b>			
TOLERANCES:					
FRACTIONAL ±					
ANGULAR: MACH ±    BEND ±					
TWO PLACE DECIMAL    ± .01					
THREE PLACE DECIMAL    ± .005		Name		Date	
INTERPRET GEOMETRIC TOLERANCING PER:		Drawn		JYG    4/26/05	
		Checked			
		QA APP			
MATERIAL				SIZE	
				B	
FINISH				DWG No:	
				116182-211	
				REV	
				D	
DO NOT SCALE DRAWING				SCALE:	
				None	
				SHEET 1 of 1	