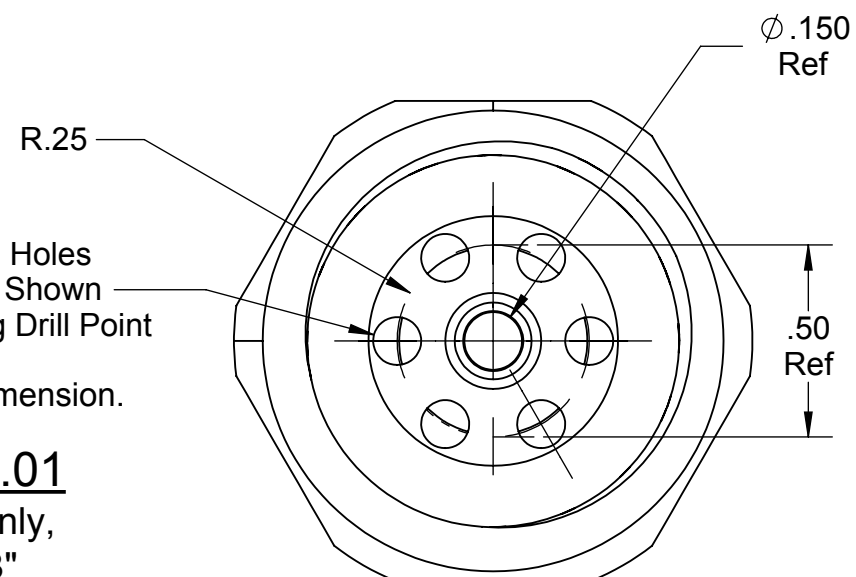
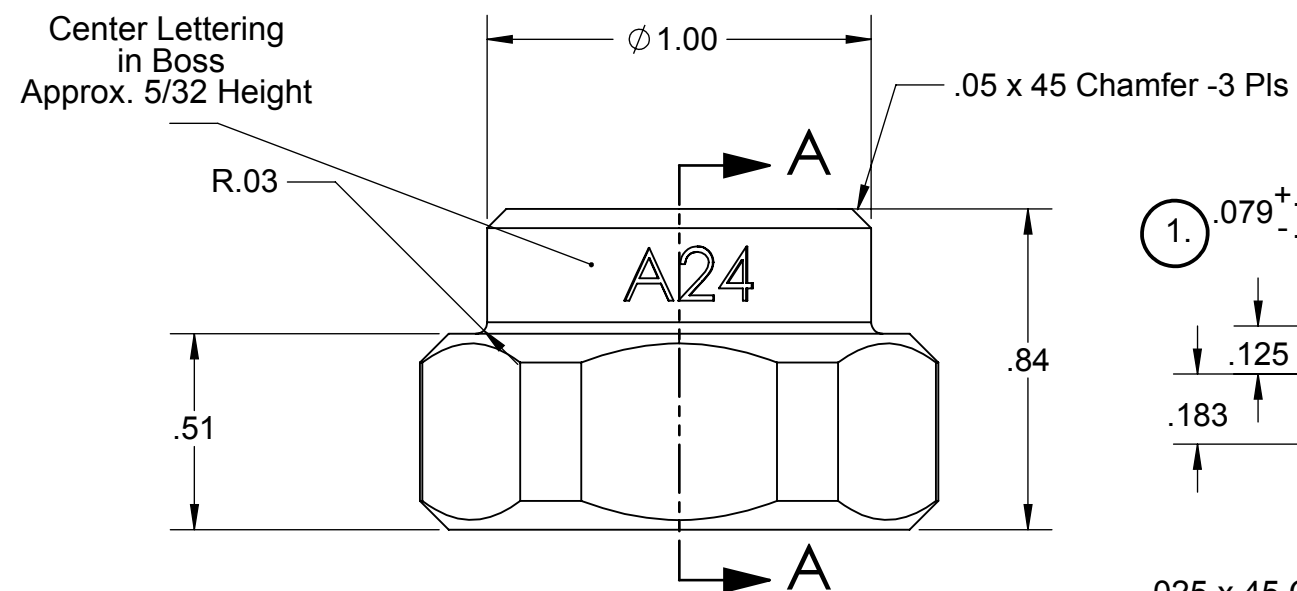
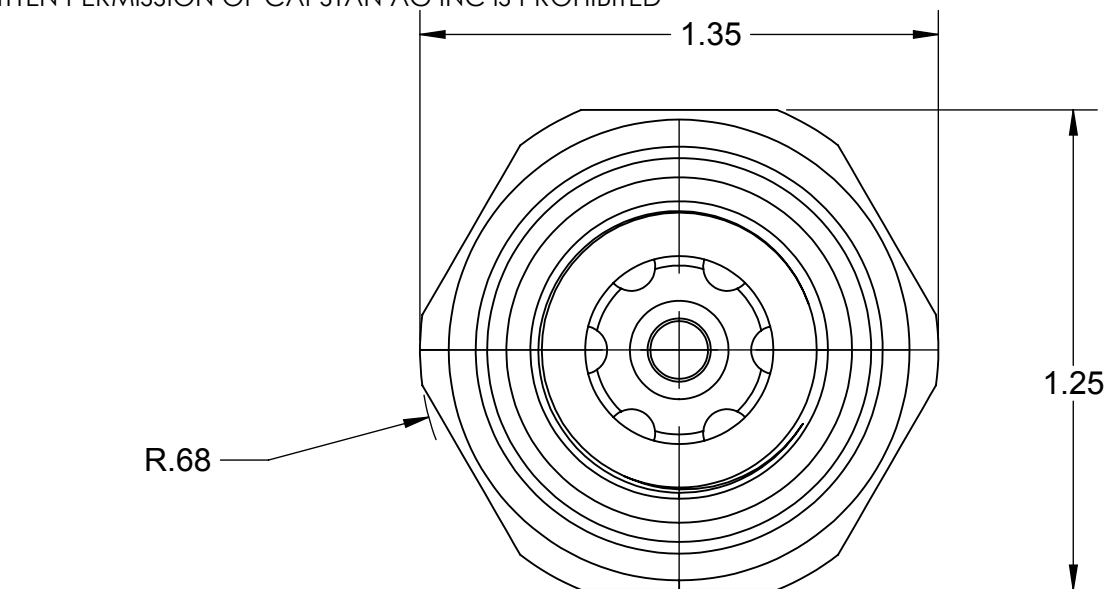
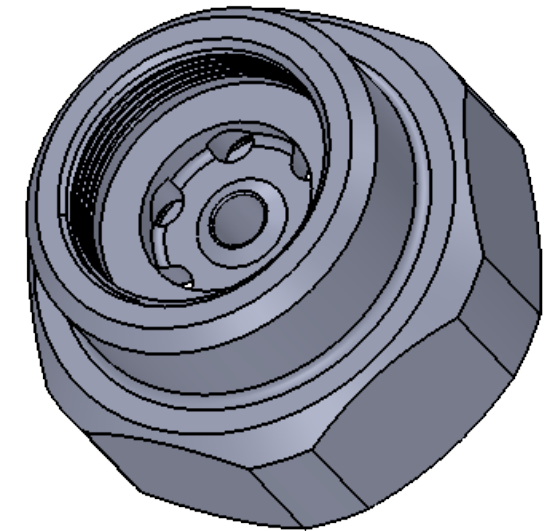


THE INFORMATION CONTAINED IN THIS DRAWING IS THE SOLE PROPERTY OF
CAPSTAN AG INC. ANY REPRODUCTION IN PART OR AS A WHOLE
WITHOUT WRITTEN PERMISSION OF CAPSTAN AG INC IS PROHIBITED

Technical drawing of a gear tooth cross-section. The drawing includes the following dimensions and tolerances:

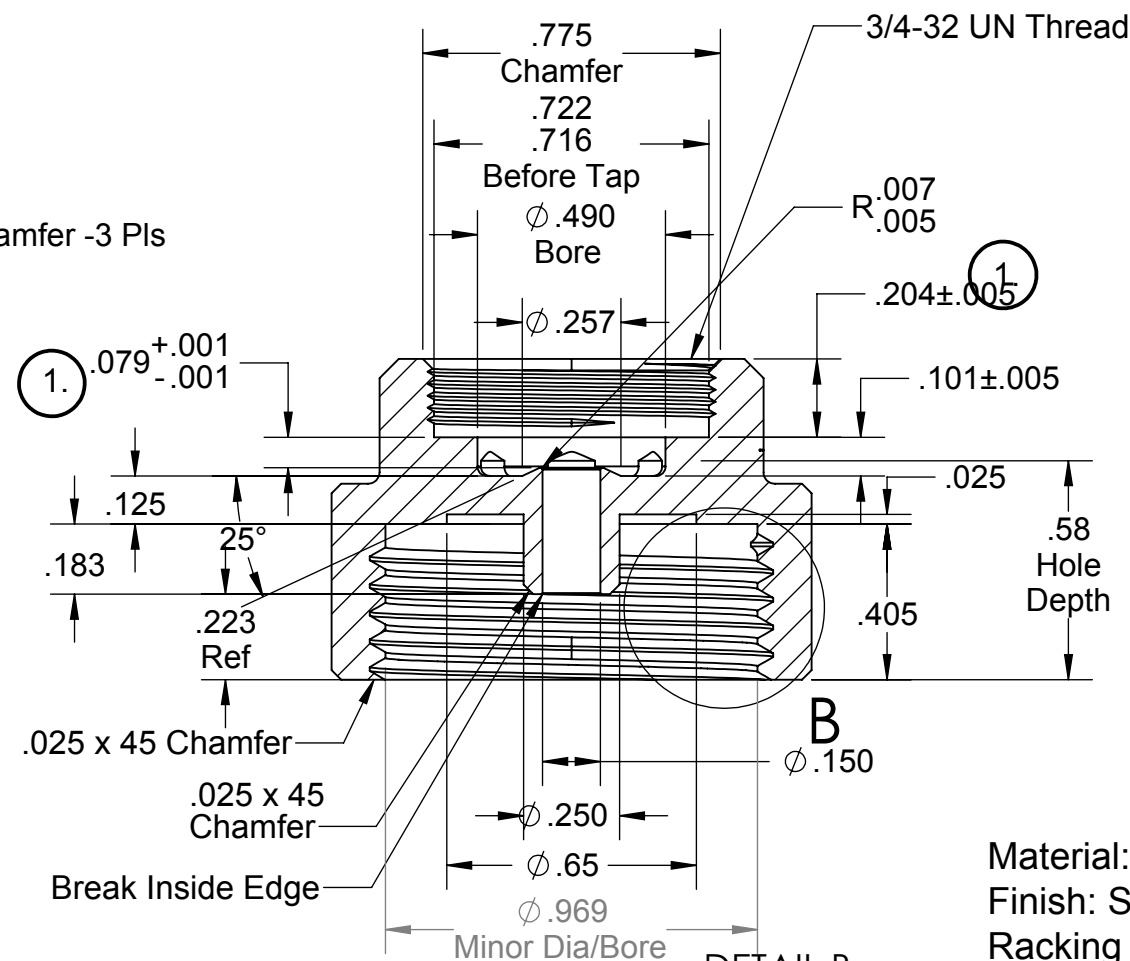
- Top fillet radius: $.041 \pm .003$ or Equiv to Radius Permitted
- Top flat width: $.010$
- Root fillet radius: $.072 \pm .003$
- Bottom flat width: $.015$
- Pressure angle: 60°



Use 135 deg Drill Point


1.) This is a Critical Dimension.

2. Pitch Diameter: 1.01
(For Reference Only,
Refer to Detail "B"
For Final Thread Dimensions.)



Material: 6061-T6 Aluminum
Finish: See drawing 750000-001.
Racking Instructions: See page 2

SECTION A-A

UNLESS OTHERWISE SPECIFIED:		<div>CapstanAG</div>			TITLE:		
DIMENSIONS ARE IN INCHES TOLERANCES: FRACTIONAL ± ANGULAR: MACH ± BEND ± TWO PLACE DECIMAL ± .010 THREE PLACE DECIMAL ± .003 INTERPRET GEOMETRIC TOLERANCING PER:							
			Name	Date	FlyBody, Arag, A24		
		Drawn	BLS	10/4/17			
		Checked					
		QA APP					
MATERIAL					SIZE	DWG No:	REV
FINISH					B	116182-002	B
DO NOT SCALE DRAWING					SCALE:	None	SHEET 1 of 1