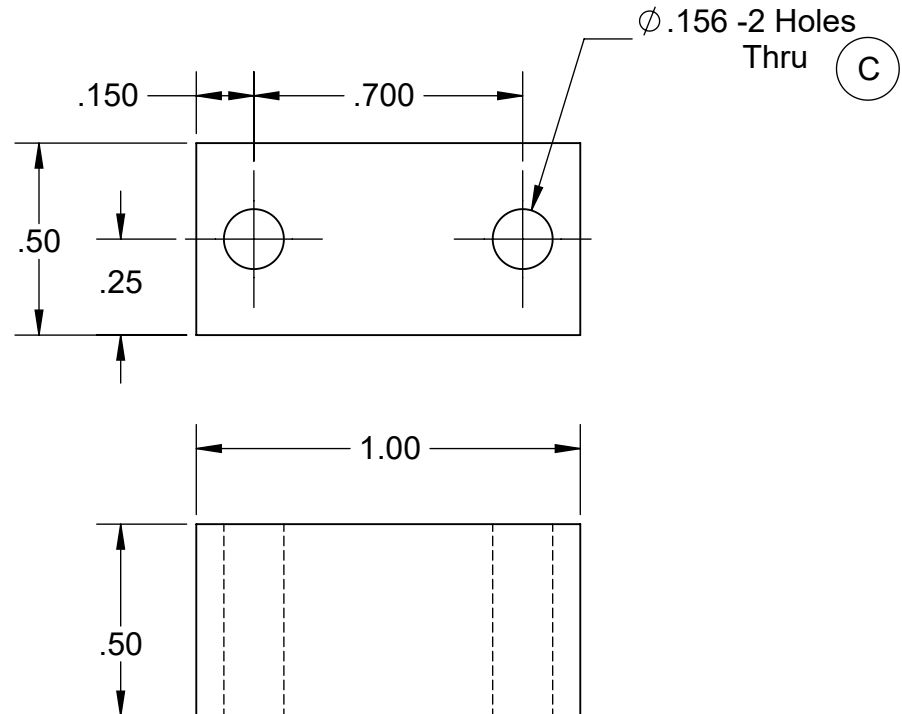
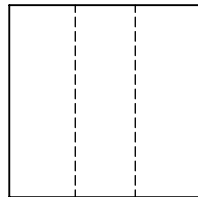
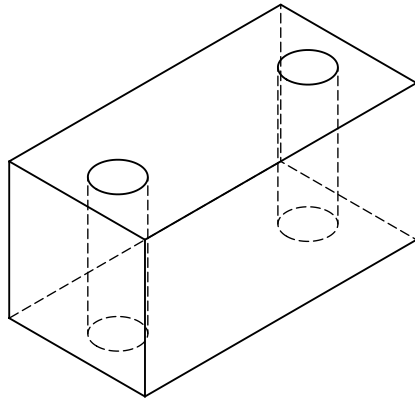


**PROPRIETARY AND CONFIDENTIAL**

THE INFORMATION CONTAINED IN THIS DRAWING IS THE SOLE PROPERTY OF CAPSTAN AG INC. ANY REPRODUCTION IN PART OR AS A WHOLE WITHOUT WRITTEN PERMISSION OF CAPSTAN AG INC IS PROHIBITED

REV	DESCRIPTION	DATE	BY
A	Redrawn on Title Block	4/03/06	RDC
B	Updated Drawing	8/07/08	RDC
C	Redrawn in SolidWorks .156 Holes was 9/64	1/7/13	BLS



Vendor: McMaster Carr 9008K23

UNLESS OTHERWISE SPECIFIED:

DIMENSIONS ARE IN INCHES  
TOLERANCES:  
FRACTIONAL  $\pm$   
ANGULAR: MACH  $\pm$  BEND  $\pm$   
TWO PLACE DECIMAL  $\pm$   
THREE PLACE DECIMAL  $\pm$

INTERPRET GEOMETRIC  
TOLERANCING PER:

MATERIAL **Aluminum**  
**6061-T6**

FINISH

DO NOT SCALE DRAWING



Name	Date
Drawn <b>TCK</b>	12/08/00
Checked	
QA APP	

**CAPSTAN AG SYSTEMS, INC.**  
**101 N. KANSAS AVE., TOPEKA, KS 66603**

TITLE:

**Heat Sink, Top**

SIZE	DWG No:	REV
<b>A</b>	<b>116166-001</b>	<b>C</b>
SCALE: <b>None</b>		