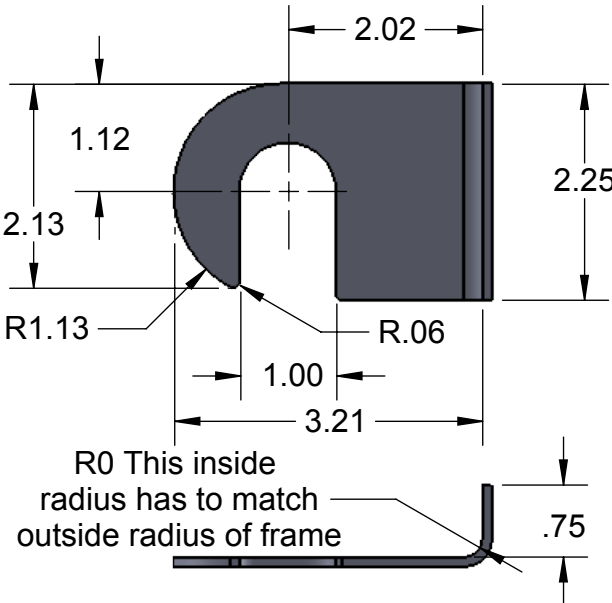
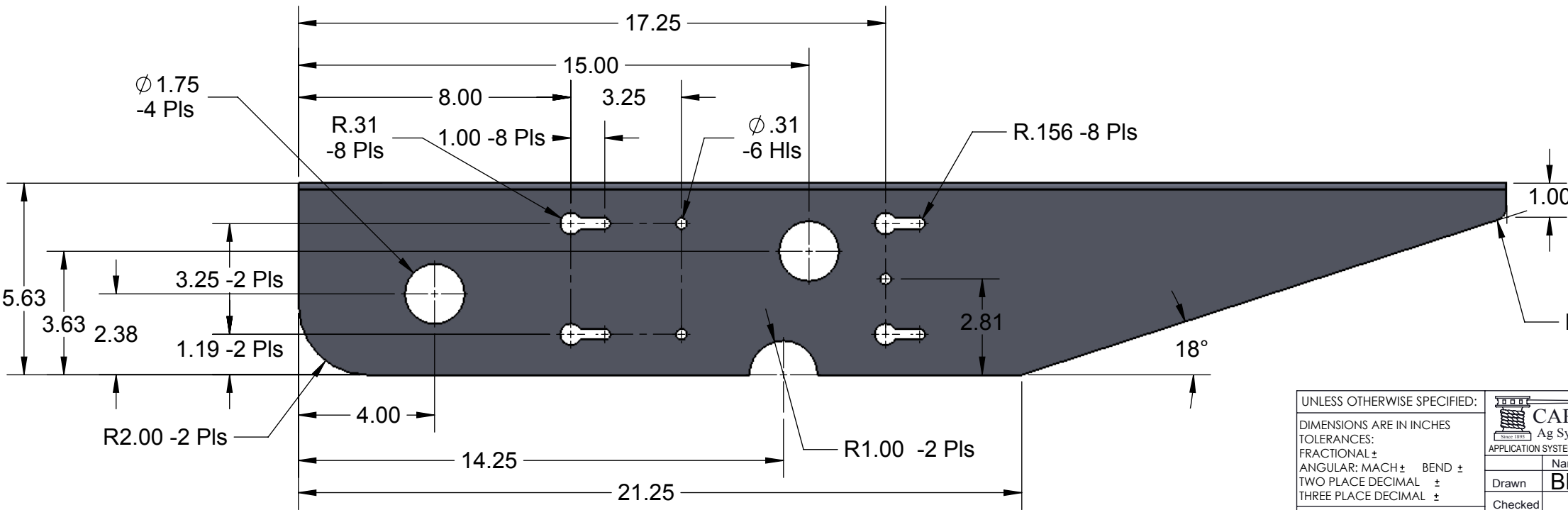
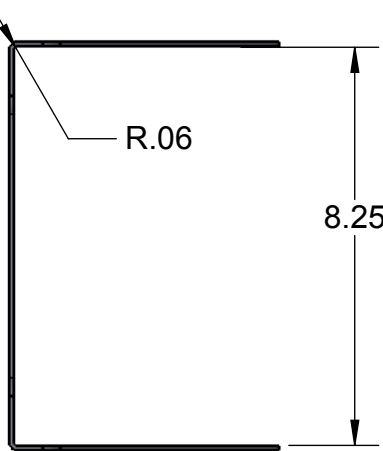
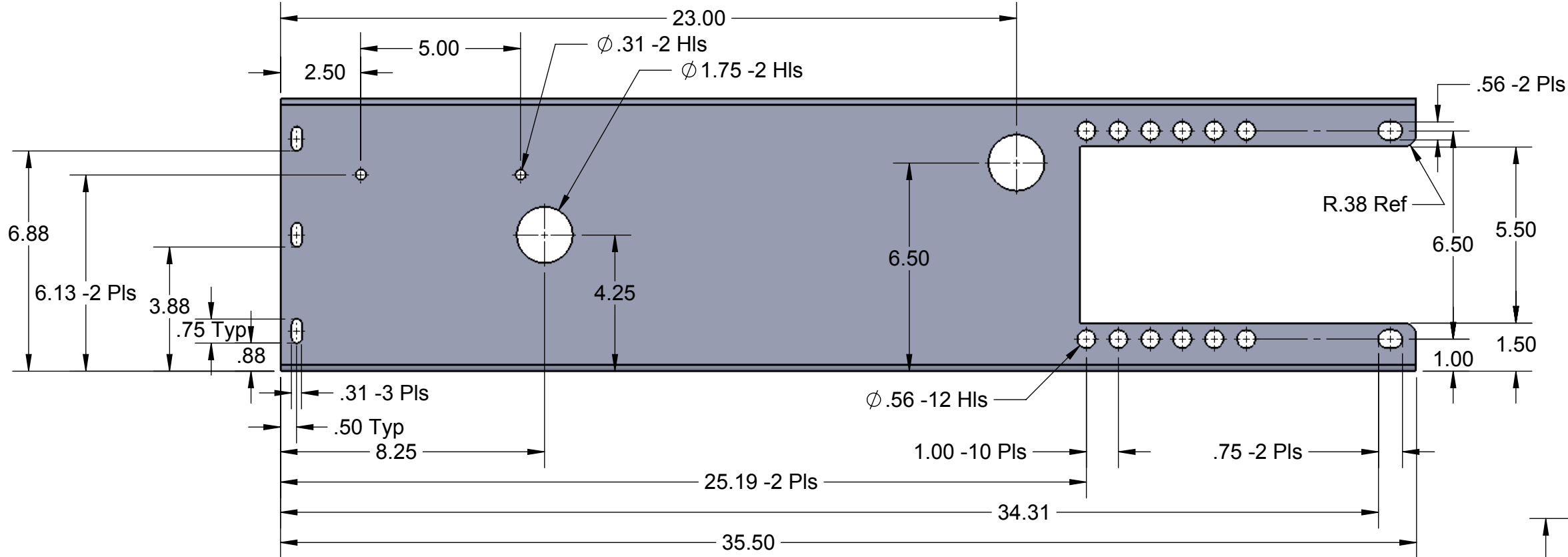


PROPRIETARY AND CONFIDENTIAL
THE INFORMATION CONTAINED IN THIS DRAWING IS THE SOLE PROPERTY OF
CAPSTAN AG INC. ANY REPRODUCTION IN PART OR AS A WHOLE
WITHOUT WRITTEN PERMISSION OF CAPSTAN AG INC IS PROHIBITED


Rev	ECR	Description	Date	By	App
A	2020	Production Release	4/1/16	BLS	



R0 This inside radius has to match outside radius of frame

Valve Clip
Material: 12ga. steel
Finish: Powder Coat Charcol Gray.

Material: 12ga. Steel
Finish: Powder Coat Charcol Gray.

UNLESS OTHERWISE SPECIFIED:		 CAPSTAN Ag Systems, Inc.		CAPSTAN AG SYSTEMS, INC. 4225 S.W. Kirklaw Ave., Topeka, KS 66609	
DIMENSIONS ARE IN INCHES		APPLICATION SYSTEMS FOR PROFESSIONALS		TITLE:	
TOLERANCES:		Name		Date	
FRACTIONAL ±		Drawn		BLS 4/1/16	
ANGULAR: MACH ± BEND ±		Checked			
TWO PLACE DECIMAL ±		QA APP			
THREE PLACE DECIMAL ±					
INTERPRET GEOMETRIC TOLERANCING PER:					
MATERIAL				SIZE	
FINISH				DWG No:	
				B 115600-010	
				REV	
				A	
				SCALE: None	
				SHEET 1 of 1	