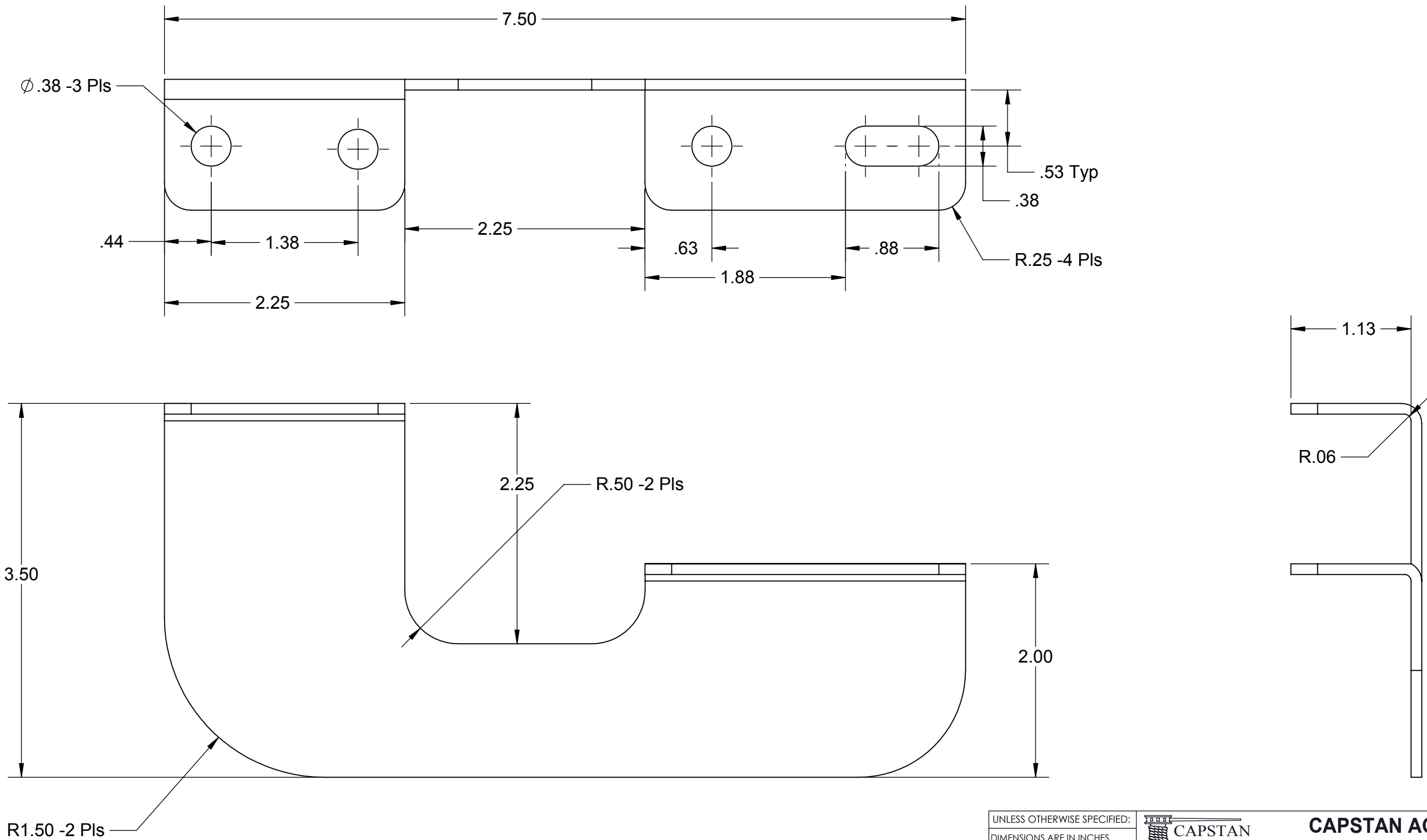



**PROPRIETARY AND CONFIDENTIAL**  
THE INFORMATION CONTAINED IN THIS DRAWING IS THE SOLE PROPERTY OF  
CAPSTAN AG INC. ANY REPRODUCTION IN PART OR AS A WHOLE  
WITHOUT WRITTEN PERMISSION OF CAPSTAN AG INC IS PROHIBITED

Rev	ECR	Description	Date	By	App
A	2020	Production Release	4/1/16	BLS	



Material: 12ga. Steel  
Finish; Powder Coat Charcol Gray.

UNLESS OTHERWISE SPECIFIED:		 <div>CAPSTAN Ag Systems, Inc. APPLICATION SYSTEMS FOR PROFESSIONALS</div>		<b>CAPSTAN AG SYSTEMS, INC.</b> 4225 S.W. Kirklawn Ave., Topeka, KS 66609															
DIMENSIONS ARE IN INCHES TOLERANCES: FRACTIONAL ± ANGULAR: MACH ±    BEND ± TWO PLACE DECIMAL ± THREE PLACE DECIMAL ± INTERPRET GEOMETRIC TOLERANCING PER:		<table><tr><td></td><td>Name</td><td>Date</td></tr><tr><td>Drawn</td><td>BLS</td><td>4/1/16</td></tr><tr><td>Checked</td><td></td><td></td></tr><tr><td>QA APP</td><td></td><td></td></tr></table>			Name	Date	Drawn	BLS	4/1/16	Checked			QA APP			TITLE:  <b>Mount Bracket Boom Tubes</b>			
	Name	Date																	
Drawn	BLS	4/1/16																	
Checked																			
QA APP																			
MATERIAL				SIZE <b>B</b>	DWG No: <b>115500-005</b>	REV <b>A</b>													
FINISH				SCALE: <b>None</b>															
DO NOT SCALE DRAWING				SHEET 1 of 1															