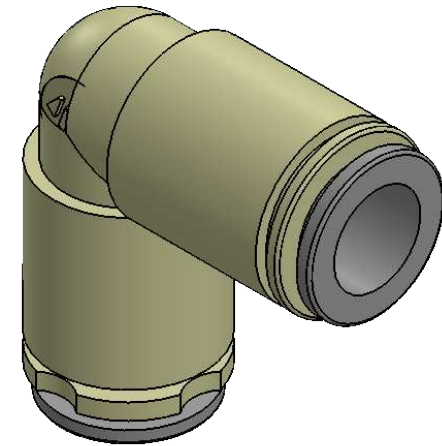
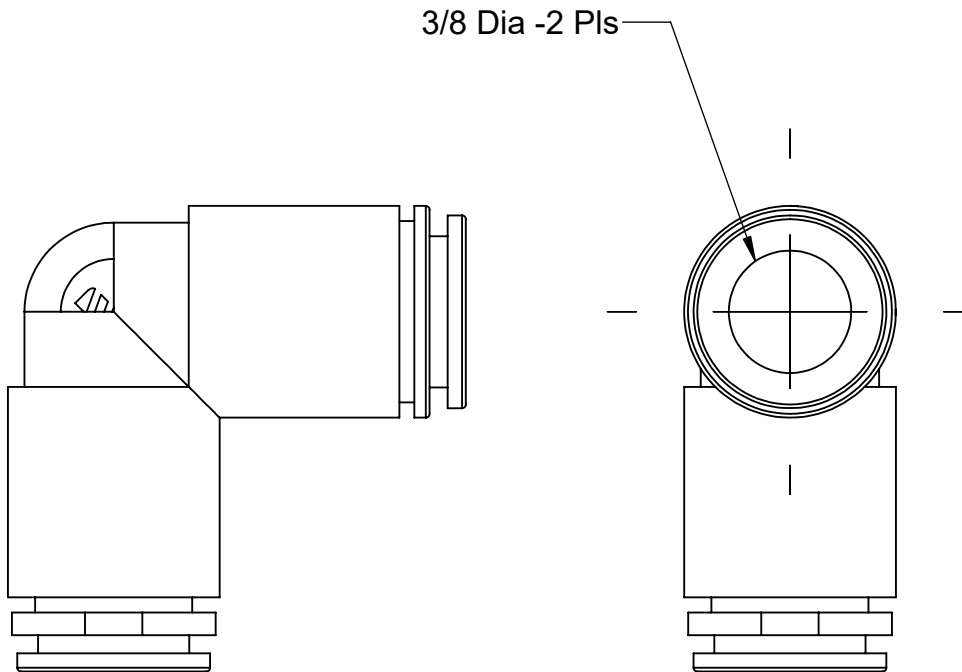


PROPRIETARY AND CONFIDENTIAL


THE INFORMATION CONTAINED IN THIS DRAWING IS THE SOLE PROPERTY OF CAPSTAN AG INC. ANY REPRODUCTION IN PART OR AS A WHOLE WITHOUT WRITTEN PERMISSION OF CAPSTAN AG INC IS PROHIBITED

REV	ECR	DESCRIPTION	DATE	BY
A	2120	Production Release	2/22/16	BLS



Suggested Vendor:

Dultmeier #LMSI031212S

 CAPSTAN AG SYSTEMS, INC. <small>APPLICATION SYSTEMS FOR PROFESSIONALS</small>		CAPSTAN AG SYSTEMS, INC. 4225 Kirklawn Ave., TOPEKA, KS 66609	
Drawn	Name BLS	Date 2/22/16	TITLE: 3/8 Super Seal 90 Deg. Elbow, Tube x Tube
Checked			
QA APP			
		SIZE A	DWG No: 115300-005
		SCALE: None	REV A
			SHEET 1 of 1