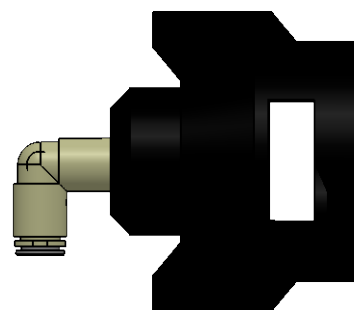
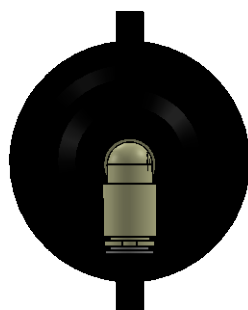


**PROPRIETARY AND CONFIDENTIAL**


THE INFORMATION CONTAINED IN THIS DRAWING IS THE SOLE PROPERTY OF CAPSTAN AG INC. ANY REPRODUCTION IN PART OR AS A WHOLE WITHOUT WRITTEN PERMISSION OF CAPSTAN AG INC IS PROHIBITED

| REV | ECR  | DESCRIPTION        | DATE    | BY  |
|-----|------|--------------------|---------|-----|
| A   | 2021 | Production Release | 2/22/16 | BLS |



Suggested Vendor:

Dultmeier #SSQJ98599-90-38

|  |             |   |  |              |
|--|-------------|---|--|--------------|
|  <b>CAPSTAN</b><br>AG SYSTEMS, INC.<br><small>APPLICATION SYSTEMS FOR PROFESSIONALS</small> |             |   | <b>CAPSTAN AG SYSTEMS, INC.</b><br><b>4225 Kirklawn Ave., TOPEKA, KS 66609</b> |              |
| Name   | Date        | TITLE: <b>Cap, Tee-Jet<br/>90 Deg Quick Connect</b> |  |              |
| Drawn  | BLS 2/22/16 |   |  |              |
| Checked  |             |   |  |              |
| QA APP   |             |   |  |              |
|  |             | SIZE<br>A   | DWG No:<br><b>115300-003</b>   | REV<br>A     |
|  |             | SCALE: None   |  | SHEET 1 of 1 |